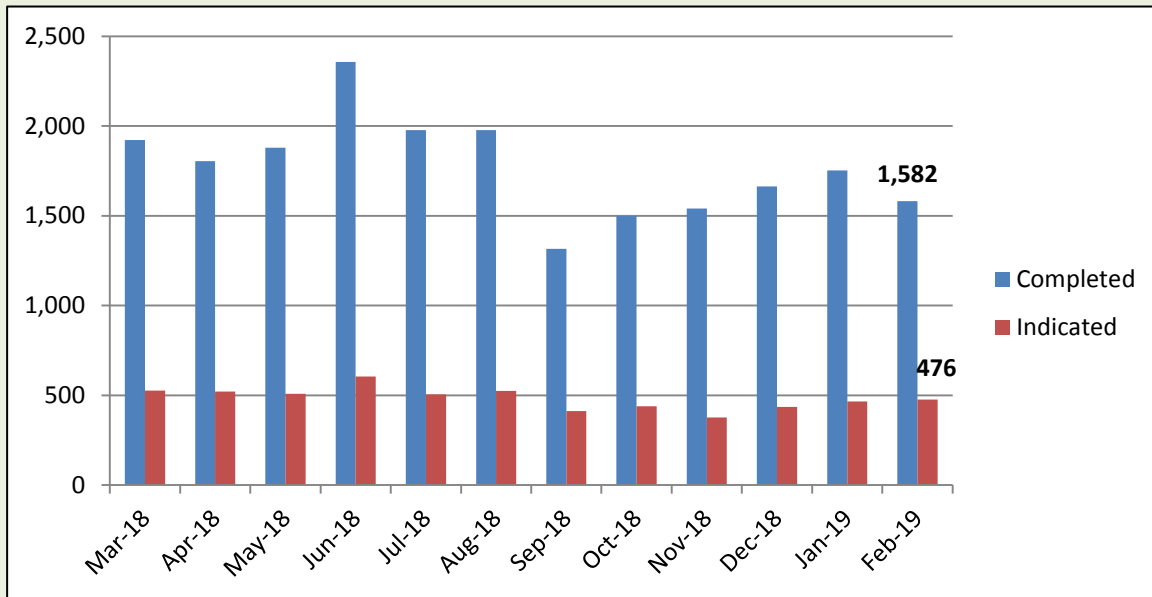


Maryland Child Welfare Data - Snapshot

State Population: 6, 052,177 // Population under 18: 1,347,506



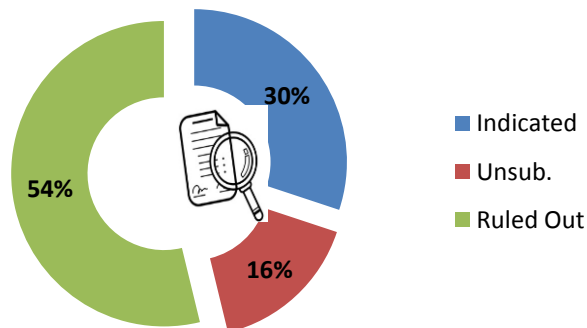
Completed Reports

Per 1,000 children
1.17 in February 2019

Indicated Reports

Per 1,000 children
0.35 in February 2019

Types of Completed Investigations

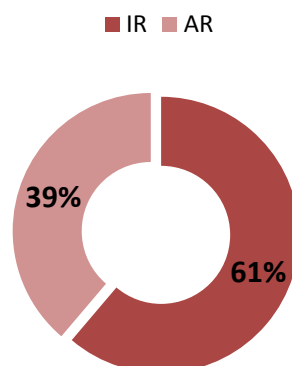


Reasons for Indicated and Unsubstantiated investigations

62%
unsubstantiated
due to **Neglect**

66% indicated
due to **Neglect**

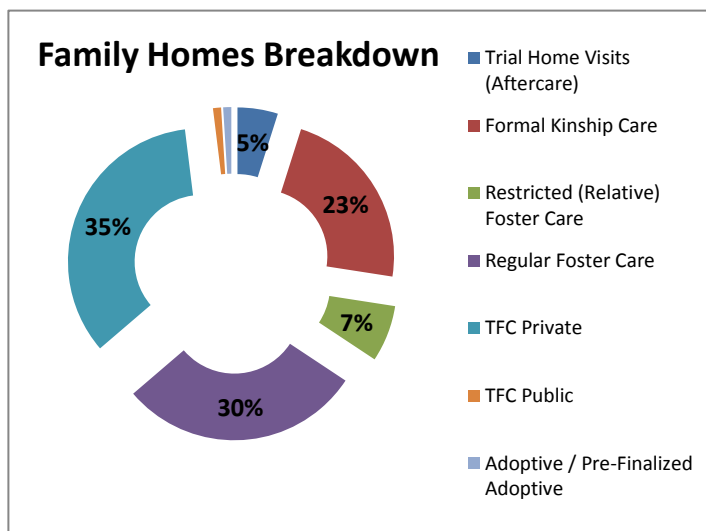
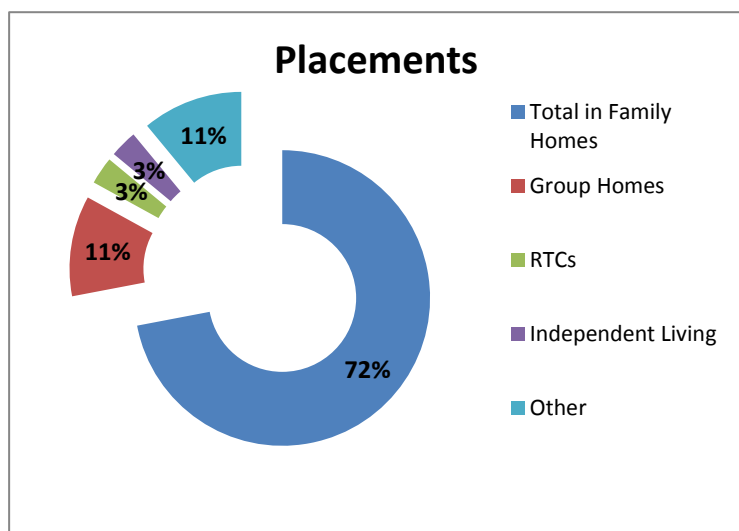
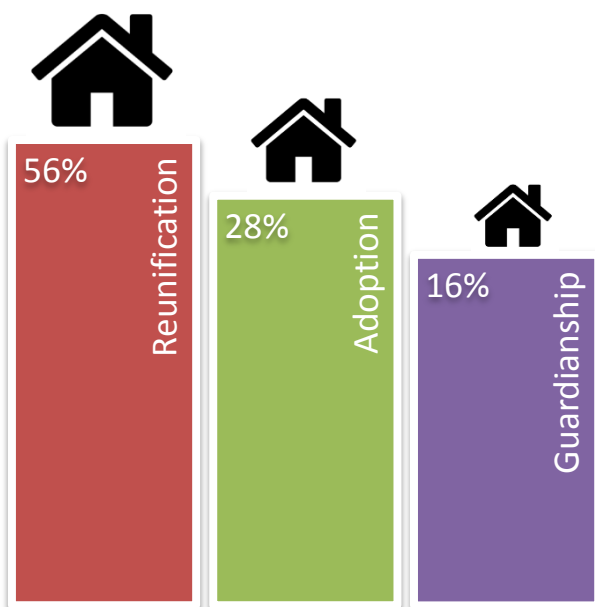
% of AR and IR cases for February 2019



more than
half of all
CPS responses
are
**Investigative
Responses**
for **February
2019**

Maryland Child Welfare Data - Snapshot

Over 80 children have exited care to permanent homes in February of 2019



OTHER includes: unknown whereabouts, college, correctional institution, inpatient medical care, inpatient psychiatric care, Job Corps, own home/apartment, secure detention facility, runaway, respite care, inpatient medical care, overnight camp, halfway house, homeless shelter

Maryland Child Welfare Data - Snapshot

OOH, Under 18, excluding Children w/Disabilities VPA

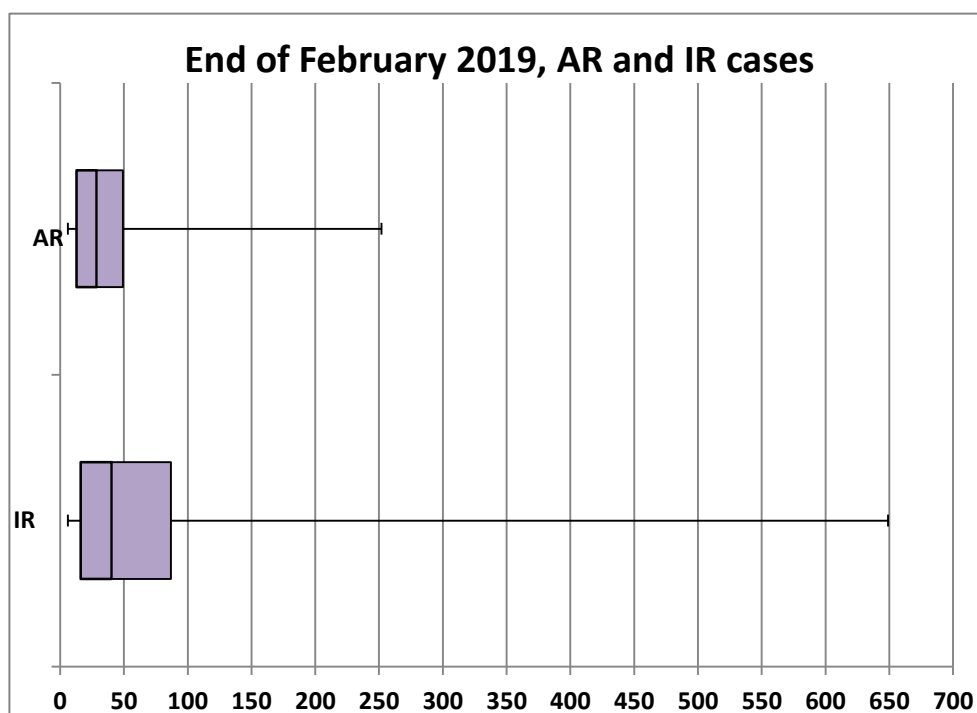
	January 2019	February 2019	% Change
Family Homes	3029	3043	0.5%
Group Homes	304	300	-1.3%
RTCs	86	89	3.5%
Independent Living	6	7	16.7%
Other	255	268	5.1%

Foster Home Recruitment

	January 2019	February 2019	% Change
Inquiries	743	569	-23.5%
New Applications	85	53	-37.6%
Accepted Applications	24	23	-4.2%

In-Home

	January 2019	February 2019	% Change
Beginning of Month	2107	2122	0.7%
New	581	464	-20.1%
Closed	571	587	2.8%
End of Month	2122	2008	-5.4%



This chart displays the distribution of AR and IR cases for the end of February 2019 in Maryland. The middle “box” represents the middle 50% of values for the group. At the end of February, the counts of 50% of AR cases were about 10 to 50 and the counts of 50% of IR cases were about 20 and 85. The median value for both AR and IR cases was about 30. The whiskers represent values outside the middle 50%. The max number of AR cases was about 250, while for IR cases it was about 650. The size of the box for AR is smaller than IR, meaning the data for AR is more similar than the data for IR.

Maryland Child Welfare Services Data

February-19

[Child Protective Services: Child Maltreatment Reports](#)

	Mar-18	Apr-18	May-18	Jun-18	Jul-18	Aug-18	Sep-18	Oct-18	Nov-18	Dec-18	Jan-19	Feb-19	1-month Change	12-month Change	12-month Median
Allegany	128	147	150	141	114	140	155	186	140	164	162	138	-15%	8%	144
Anne Arundel	603	622	615	464	306	325	535	627	553	473	561	574	2%	-5%	557
Baltimore City	528	667	696	459	465	460	502	628	561	453	600	591	-2%	12%	545
Baltimore County	418	491	467	315	300	282	369	449	460	468	515	453	-12%	8%	451
Calvert	80	95	101	72	45	56	72	97	73	74	94	75	-20%	-6%	75
Caroline	39	27	48	37	31	46	42	48	41	21	51	38	-25%	-3%	40
Carroll	224	219	259	180	129	177	183	208	179	171	196	197	1%	-12%	190
Cecil	182	158	241	154	140	123	171	218	173	167	200	147	-27%	-19%	169
Charles	179	164	167	105	95	94	132	165	160	128	147	144	-2%	-20%	146
Dorchester	59	56	72	56	38	40	44	67	51	54	59	50	-15%	-15%	55
Frederick	333	300	334	218	180	191	266	349	264	229	283	275	-3%	-17%	271
Garrett	35	21	16	26	19	8	55	16	24	45	23	40	74%	14%	24
Harford	295	329	383	266	189	224	276	381	301	250	355	286	-19%	-3%	291
Howard	259	282	284	180	111	114	197	289	246	246	216	207	-4%	-20%	231
Kent	17	13	14	16	15	10	12	15	14	9	24	12	-50%	-29%	14
Montgomery	541	468	474	380	349	349	433	489	503	457	458	482	5%	-11%	463
Prince George's	851	748	894	560	366	401	582	758	594	566	564	619	10%	-27%	588
Queen Anne's	26	36	32	15	14	22	25	33	33	30	24	34	42%	31%	28
St. Mary's	135	144	125	100	73	80	40	143	103	100	134	94	-30%	-30%	102
Somerset	32	44	55	39	31	27	122	41	27	38	45	48	7%	50%	40
Talbot	34	40	36	36	22	23	33	41	20	30	51	39	-24%	15%	35
Washington	255	316	306	222	154	236	282	299	260	261	318	243	-24%	-5%	261
Wicomico	130	124	133	110	99	94	117	158	125	112	167	168	1%	29%	125
Worcester	51	60	69	44	42	50	56	55	51	52	71	57	-20%	12%	54
TOTAL	5,434	5,571	5,971	4,195	3,327	3,572	4,701	5,760	4,956	4,598	5,318	5,011	-6%	-8%	4,984

Source: MD CHESSIE, Business Objects RE865R

Maryland Child Welfare Services Data

February-19

[Child Protective Services - New \(total\)](#)

	Mar-18	Apr-18	May-18	Jun-18	Jul-18	Aug-18	Sep-18	Oct-18	Nov-18	Dec-18	Jan-19	Feb-19	1 month Change	12-month Change	12-month Median
Allegany	23	29	48	29	28	38	39	32	30	33	30	24	-20%	4%	30
Anne Arundel	217	227	224	143	105	111	165	209	186	160	202	192	-5%	-12%	189
Baltimore City	331	398	443	279	256	277	264	376	335	252	292	329	13%	-1%	311
Baltimore County	222	263	244	172	152	133	188	219	211	181	187	187	0%	-16%	188
Calvert	28	30	37	21	16	28	17	36	31	30	35	24	-31%	-14%	29
Caroline	9	7	15	9	3	11	9	8	9	3	13	10	-23%	11%	9
Carroll	70	62	87	56	31	41	48	57	56	58	78	44	-44%	-37%	57
Cecil	39	47	59	41	29	32	47	65	46	43	58	35	-40%	-10%	45
Charles	57	51	64	34	37	32	44	55	52	39	43	48	12%	-16%	46
Dorchester	26	21	32	27	19	13	16	24	18	22	16	13	-19%	-50%	20
Frederick	86	77	94	40	53	51	57	77	67	55	58	61	5%	-29%	60
Garrett	18	11	14	10	20	8	16	12	14	15	22	13	-41%	-28%	14
Harford	105	104	133	78	73	75	107	132	84	89	100	122	22%	16%	102
Howard	46	51	50	30	33	28	45	52	46	39	37	35	-5%	-24%	42
Kent	7	10	8	9	10	8	8	8	11	5	7	7	0%	0%	8
Montgomery	241	267	263	156	133	125	154	221	211	201	197	217	10%	-10%	206
Prince George's	257	229	389	248	165	165	240	313	251	189	237	266	12%	4%	244
Queen Anne's	11	10	3	1	2	6	5	5	3	7	8	8	0%	-27%	6
St. Mary's	28	41	20	25	19	22	26	38	41	25	35	36	3%	29%	27
Somerset	12	12	40	8	9	12	12	17	8	11	12	17	42%	42%	12
Talbot	11	6	11	14	5	10	10	14	5	7	12	8	-33%	-27%	10
Washington	103	112	117	75	47	74	74	78	62	73	63	58	-8%	-44%	74
Wicomico	36	49	40	34	35	26	48	61	48	34	50	42	-16%	17%	41
Worcester	24	22	26	18	26	24	20	27	23	16	32	15	-53%	-38%	24
TOTAL	2,007	2,136	2,461	1,557	1,306	1,350	1,659	2,136	1,848	1,587	1,824	1,811	-1%	-10%	1,818

Source: MD CHESSIE, through August 2013 = Business Objects RE861R; September 2013 and after = Business Objects RE862R

Maryland Child Welfare Services Data

February-19

[Child Protective Services -- Completed \(total\)](#)

	Mar-18	Apr-18	May-18	Jun-18	Jul-18	Aug-18	Sep-18	Oct-18	Nov-18	Dec-18	Jan-19	Feb-19	1 month Change	12-month Change	12-month Median
Allegany	40	20	40	36	31	38	25	27	30	26	40	20	-50%	-50%	31
Anne Arundel	193	202	211	239	216	273	114	84	180	169	191	167	-13%	-13%	192
Baltimore City	423	365	303	378	349	476	211	216	248	292	278	282	1%	-33%	298
Baltimore County	208	212	216	253	211	273	119	113	175	174	241	174	-28%	-16%	210
Calvert	30	24	23	32	35	42	12	17	21	39	41	25	-39%	-17%	28
Caroline	12	15	7	10	15	19	3	2	13	7	10	2	-80%	-83%	10
Carroll	49	45	74	86	59	76	32	23	46	69	53	62	17%	27%	56
Cecil	41	58	47	40	69	77	18	2	24	63	56	59	5%	44%	52
Charles	59	53	59	62	55	54	29	16	57	46	56	33	-41%	-44%	55
Dorchester	26	20	28	22	28	48	14	5	20	21	17	25	47%	-4%	22
Frederick	91	85	81	85	38	38	50	47	82	58	61	55	-10%	-40%	60
Garrett	13	21	15	14	13	12	7	6	12	19	12	15	25%	15%	13
Harford	89	87	91	117	92	178	87	61	96	101	112	101	-10%	13%	94
Howard	40	37	46	53	49	46	25	22	48	40	50	32	-36%	-20%	43
Kent	5	11	8	6	8	10	9	8	11	6	9	5	-44%	0%	8
Montgomery	254	235	279	256	192	389	138	125	177	144	208	172	-17%	-32%	200
Prince George's	225	188	244	277	316	415	166	110	265	276	211	212	0%	-6%	235
Queen Anne's	5	7	11	7	3	4	1	2	6	3	5	8	60%	60%	5
St. Mary's	28	22	37	46	39	42	12	11	32	22	52	31	-40%	11%	32
Somerset	13	8	31	12	22	18	11	12	15	10	11	9	-18%	-31%	12
Talbot	10	16	4	11	12	16	6	7	11	9	5	9	80%	-10%	10
Washington	90	96	89	125	89	106	56	68	74	58	63	73	16%	-19%	82
Wicomico	52	49	43	38	44	42	25	11	57	46	55	24	-56%	-54%	44
Worcester	23	23	17	32	21	18	64	19	31	20	23	21	-9%	-9%	22
TOTAL	2,019	1,899	2,004	2,237	2,006	2,710	1,234	1,014	1,731	1,718	1,860	1,616	-13%	-20%	1,880

Source: MD CHESSIE, through August 2013 = Business Objects RE861R; September 2013 and after = SSA/Operations calculations (based on RE861R and RE862R)

Maryland Child Welfare Services Data

February-19

[Child Protective Services -- End of Month \(total\)](#)

	Mar-18	Apr-18	May-18	Jun-18	Jul-18	Aug-18	Sep-18	Oct-18	Nov-18	Dec-18	Jan-19	Feb-19	1 month Change	12-month Change	12-month Median
Allegany	12	21	29	22	19	22	36	27	27	34	24	28	17%	133%	26
Anne Arundel	384	409	422	326	215	164	215	289	295	286	297	322	8%	-16%	296
Baltimore City	635	668	808	709	616	510	563	670	757	717	731	778	6%	23%	690
Baltimore County	342	393	421	340	281	200	269	306	342	349	295	308	4%	-10%	324
Calvert	43	49	63	52	33	38	43	57	67	58	52	51	-2%	19%	52
Caroline	23	15	23	22	10	14	20	20	16	12	15	23	53%	0%	18
Carroll	101	118	131	101	73	66	82	100	110	99	124	106	-15%	5%	101
Cecil	98	87	99	100	60	55	84	118	140	120	122	98	-20%	0%	99
Charles	111	109	114	86	68	64	79	103	98	91	78	93	19%	-16%	92
Dorchester	44	45	49	54	45	19	21	38	36	37	36	24	-33%	-45%	38
Frederick	78	70	83	38	53	51	58	81	66	63	60	66	10%	-15%	65
Garrett	33	23	22	18	25	14	23	20	22	18	28	26	-7%	-21%	23
Harford	202	219	261	222	203	119	139	190	178	166	154	175	14%	-13%	184
Howard	69	83	87	64	48	46	66	76	74	73	60	63	5%	-9%	68
Kent	14	13	13	16	18	14	13	14	14	13	11	13	18%	-7%	14
Montgomery	570	602	586	486	427	222	238	318	352	409	398	443	11%	-22%	418
Prince George's	404	445	590	561	410	311	385	514	500	413	439	493	12%	22%	442
Queen Anne's	18	21	13	7	6	9	13	12	9	13	16	16	0%	-11%	13
St. Mary's	75	94	77	56	36	36	50	63	72	75	58	63	9%	-16%	63
Somerset	21	25	34	30	17	24	25	29	22	23	24	32	33%	52%	25
Talbot	16	6	13	16	9	10	14	17	11	9	16	15	-6%	-6%	14
Washington	141	157	185	135	93	103	121	113	101	116	116	101	-13%	-28%	116
Wicomico	68	68	65	61	52	45	68	95	86	74	69	87	26%	28%	68
Worcester	44	43	52	38	43	44	0	52	44	40	49	43	-12%	-2%	44
TOTAL	3,546	3,783	4,240	3,560	2,860	2,200	2,625	3,322	3,439	3,308	3,272	3,467	6%	-2%	3,381

Source: MD CHESSIE, Business Objects RE861R

Maryland Child Welfare Services Data

February-19

[Child Protective Services: Alternative Response, Beginning of the Month](#)

	Mar-18	Apr-18	May-18	Jun-18	Jul-18	Aug-18	Sep-18	Oct-18	Nov-18	Dec-18	Jan-19	Feb-19	1-month Change	12-month Change	12-Month Median
Allegany	12	2	7	7	6	8	2	18	13	10	16	11	-31%	-8%	9
Anne Arundel	119	131	139	147	99	53	35	52	95	103	96	118	23%	-1%	101
Baltimore City*	49	39	38	41	44	33	29	34	55	65	63	75	19%	53%	43
Baltimore County	137	149	158	157	114	104	62	97	111	131	149	123	-17%	-10%	127
Calvert	22	27	27	38	33	18	23	25	34	46	40	34	-15%	55%	30
Caroline	8	7	6	8	8	6	4	7	8	8	4	2	-50%	-75%	7
Carroll	21	31	32	44	43	28	22	38	49	40	29	49	69%	133%	35
Cecil	44	40	27	33	40	20	19	30	45	48	41	35	-15%	-20%	38
Charles	61	65	71	86	63	36	35	47	62	56	48	43	-10%	-30%	59
Dorchester	21	25	24	24	21	19	9	9	25	17	13	13	0%	-38%	20
Frederick	41	44	33	46	22	29	28	29	45	35	28	28	0%	-32%	31
Garrett	12	11	8	7	9	11	3	7	13	10	5	16	220%	33%	10
Harford	88	79	74	92	100	79	33	41	66	70	65	45	-31%	-49%	72
Howard	23	25	39	36	21	16	14	28	35	22	24	17	-29%	-26%	24
Kent	5	8	9	7	9	8	5	6	5	5	6	5	-17%	0%	6
Montgomery	286	281	320	328	268	225	88	105	154	171	206	186	-10%	-35%	216
Prince George's	168	193	198	268	259	170	125	175	244	245	206	207	0%	23%	202
Queen Anne's	5	10	14	8	3	1	4	9	7	2	6	8	33%	60%	7
St. Mary's	32	33	35	32	19	10	13	26	34	49	54	37	-31%	16%	33
Somerset	14	13	11	19	17	7	10	11	18	13	14	15	7%	7%	14
Talbot	11	9	4	5	6	4	5	8	8	4	5	7	40%	-36%	6
Washington	55	54	62	72	64	32	29	46	50	38	46	43	-7%	-22%	48
Wicomico	41	31	30	36	26	21	24	39	53	50	38	30	-21%	-27%	34
Worcester	22	21	21	23	12	18	19	13	21	24	22	24	9%	9%	21
TOTAL	1,297	1,328	1,387	1,564	1,306	956	640	900	1,250	1,262	1,224	1,171	-4%	-10%	1,256

Source: MD CHESSIE, Child Welfare (prior month)

Maryland Child Welfare Services Data

February-19

[Child Protective Services: Alternative Response, New](#)

	Mar-18	Apr-18	May-18	Jun-18	Jul-18	Aug-18	Sep-18	Oct-18	Nov-18	Dec-18	Jan-19	Feb-19	1 month Change	12-month Change	12-month Median
Allegany	10	9	17	12	13	13	23	13	13	16	13	11	-15%	10%	13
Anne Arundel	81	88	87	49	27	28	49	81	70	55	96	78	-19%	-4%	74
Baltimore City*	29	29	38	24	16	19	23	40	47	27	49	97	98%	234%	29
Baltimore County	107	111	99	64	64	57	85	100	96	97	92	108	17%	1%	97
Calvert	18	17	22	15	10	18	8	24	22	17	25	11	-56%	-39%	18
Caroline	4	3	5	5	1	4	4	4	5	0	3	3	0%	-25%	4
Carroll	23	16	34	25	7	15	25	27	14	20	30	16	-47%	-30%	22
Cecil	16	13	25	20	13	15	18	32	19	19	19	11	-42%	-31%	19
Charles	37	38	52	22	19	21	29	34	30	23	24	27	13%	-27%	28
Dorchester	15	12	16	9	11	9	8	18	6	10	4	5	25%	-67%	10
Frederick	56	39	59	28	30	30	31	44	38	30	32	37	16%	-34%	35
Garrett	5	4	5	5	8	1	6	8	6	4	13	6	-54%	20%	6
Harford	35	35	50	46	20	28	36	52	40	32	31	40	29%	14%	36
Howard	21	28	21	13	14	10	23	26	18	16	14	14	0%	-33%	17
Kent	4	7	5	4	5	2	4	3	5	2	4	2	-50%	-50%	4
Montgomery	133	148	149	73	51	57	78	118	102	101	78	108	38%	-19%	102
Prince George's	138	104	191	121	67	77	127	150	132	108	110	152	38%	10%	124
Queen Anne's	7	8	3	0	1	4	5	3	1	5	5	6	20%	-14%	5
St. Mary's	9	17	14	5	6	11	15	23	34	17	19	26	37%	189%	16
Somerset	8	6	18	5	6	5	7	12	6	8	9	11	22%	38%	8
Talbot	5	3	5	8	3	6	6	6	3	4	6	3	-50%	-40%	5
Washington	45	43	50	33	14	26	32	37	25	30	22	22	0%	-51%	31
Wicomico	16	26	22	11	18	15	27	34	28	19	24	24	0%	50%	23
Worcester	12	12	11	4	15	9	6	15	15	10	17	9	-47%	-25%	12
TOTAL	834	816	998	601	439	480	675	904	775	670	739	827	12%	-1%	757

Source: MD CHESSIE, Business Objects RE862R

Maryland Child Welfare Services Data

February-19

[Child Protective Services: Alternative Response, Completed](#)

	Mar-18	Apr-18	May-18	Jun-18	Jul-18	Aug-18	Sep-18	Oct-18	Nov-18	Dec-18	Jan-19	Feb-19	1 month Change	12-month Change	12-month Median
Allegany	20	4	17	13	11	19	7	18	16	10	18	10	-44%	-50%	15
Anne Arundel	69	80	79	97	73	46	32	38	62	62	74	64	-14%	-7%	67
Baltimore City*	39	30	35	21	27	23	18	19	37	29	37	43	16%	10%	30
Baltimore County	95	102	100	107	74	99	50	86	76	79	118	74	-37%	-22%	91
Calvert	13	17	11	20	25	13	6	15	10	23	31	16	-48%	23%	16
Caroline	5	4	3	5	3	6	1	3	5	4	5	-2	-140%	-140%	4
Carroll	13	15	22	26	22	21	9	16	23	31	10	23	130%	77%	22
Cecil	20	26	19	13	33	16	7	17	16	26	25	22	-12%	10%	20
Charles	33	32	37	45	46	22	17	19	36	31	29	21	-28%	-36%	32
Dorchester	11	13	16	12	13	19	8	2	14	14	4	10	150%	-9%	13
Frederick	53	50	46	52	23	31	30	28	48	37	32	37	16%	-30%	37
Garrett	6	7	6	3	6	9	2	2	9	9	2	9	350%	50%	6
Harford	44	40	32	38	41	74	28	27	36	37	51	35	-31%	-20%	38
Howard	19	14	24	28	19	12	9	19	31	14	21	11	-48%	-42%	19
Kent	1	6	7	2	6	5	3	4	5	1	5	1	-80%	0%	5
Montgomery	138	109	141	133	94	194	61	69	85	66	98	78	-20%	-43%	96
Prince George's	113	99	121	130	156	122	77	81	131	147	109	107	-2%	-5%	117
Queen Anne's	2	4	9	5	3	1	0	5	6	1	3	4	33%	100%	4
St. Mary's	8	15	17	18	15	8	2	15	19	12	36	25	-31%	213%	15
Somerset	9	8	10	7	16	2	6	5	11	7	8	7	-13%	-22%	8
Talbot	7	8	4	7	5	5	3	6	7	3	4	4	0%	-43%	5
Washington	46	35	40	41	46	29	15	33	37	22	25	30	20%	-35%	34
Wicomico	26	27	16	21	23	12	12	20	31	31	32	12	-63%	-54%	22
Worcester	13	12	9	15	9	8	25	7	12	12	15	12	-20%	-8%	12
TOTAL	803	757	821	859	789	796	428	554	763	708	792	653	-18%	-19%	776

Source: MD CHESSIE, SSA/Operations calculations (based on data from BusinessObjects Re861R and RE862R)

Maryland Child Welfare Services Data

February-19

[Child Protective Services: Alternative Response, End of the Month](#)

	Mar-18	Apr-18	May-18	Jun-18	Jul-18	Aug-18	Sep-18	Oct-18	Nov-18	Dec-18	Jan-19	Feb-19	1 month Change	12-month Change	12-month Median
Allegany	2	7	7	6	8	2	18	13	10	16	11	12	9%	500%	9
Anne Arundel	131	139	147	99	53	35	52	95	103	96	118	132	12%	1%	101
Baltimore City*	39	38	41	44	33	29	34	55	65	63	75	129	72%	231%	43
Baltimore County	149	158	157	114	104	62	97	111	131	149	123	157	28%	5%	127
Calvert	27	27	38	33	18	23	25	34	46	40	34	29	-15%	7%	31
Caroline	7	6	8	8	6	4	7	8	8	4	2	7	250%	0%	7
Carroll	31	32	44	43	28	22	38	49	40	29	49	42	-14%	35%	39
Cecil	40	27	33	40	20	19	30	45	48	41	35	24	-31%	-40%	34
Charles	65	71	86	63	36	35	47	62	56	48	43	49	14%	-25%	53
Dorchester	25	24	24	21	19	9	9	25	17	13	13	8	-38%	-68%	18
Frederick	44	33	46	22	29	28	29	45	35	28	28	28	0%	-36%	29
Garrett	11	8	7	9	11	3	7	13	10	5	16	13	-19%	18%	10
Harford	79	74	92	100	79	33	41	66	70	65	45	50	11%	-37%	68
Howard	25	39	36	21	16	14	28	35	22	24	17	20	18%	-20%	23
Kent	8	9	7	9	8	5	6	5	5	6	5	6	20%	-25%	6
Montgomery	281	320	328	268	225	88	105	154	171	206	186	216	16%	-23%	211
Prince George's	193	198	268	259	170	125	175	244	245	206	207	252	22%	31%	207
Queen Anne's	10	14	8	3	1	4	9	7	2	6	8	10	25%	0%	8
St. Mary's	33	35	32	19	10	13	26	34	49	54	37	38	3%	15%	34
Somerset	13	11	19	17	7	10	11	18	13	14	15	19	27%	46%	14
Talbot	9	4	5	6	4	5	8	8	4	5	7	6	-14%	-33%	6
Washington	54	62	72	64	32	29	46	50	38	46	43	35	-19%	-35%	46
Wicomico	31	30	36	26	21	24	39	53	50	38	30	42	40%	35%	34
Worcester	21	21	23	12	18	19	0	21	24	22	24	21	-13%	0%	21
TOTAL	1,328	1,387	1,564	1,306	956	640	887	1,250	1,262	1,224	1,171	1,345	15%	1%	1,256

Source: MD CHESSIE, Business Objects RE861R

Maryland Child Welfare Services Data

February-19

[Child Protective Services: Investigative Response, Beginning of the Month](#)

	Mar-18	Apr-18	May-18	Jun-18	Jul-18	Aug-18	Sep-18	Oct-18	Nov-18	Dec-18	Jan-19	Feb-19	1-month Change	12-month Change	12-month Median
Allegany	17	10	14	22	16	11	20	18	14	17	18	13	-28%	-24%	17
Anne Arundel	241	253	270	275	227	162	129	163	194	192	190	179	-6%	-26%	193
Baltimore City*	678	596	630	767	665	583	481	529	615	692	654	656	0%	-3%	642
Baltimore County	191	193	235	264	226	177	138	172	195	211	200	172	-14%	-10%	194
Calvert	23	16	22	25	19	15	15	18	23	21	18	18	0%	-22%	19
Caroline	18	16	9	15	14	4	10	13	12	8	8	13	63%	-28%	13
Carroll	59	70	86	87	58	45	44	44	51	70	70	75	7%	27%	65
Cecil	56	58	60	66	60	40	36	54	73	92	79	87	10%	55%	60
Charles	52	46	38	28	23	32	29	32	41	42	43	35	-19%	-33%	37
Dorchester	23	19	21	25	33	26	10	12	13	19	24	23	-4%	0%	22
Frederick	42	34	37	37	16	24	23	29	36	31	35	32	-9%	-24%	33
Garrett	16	22	15	15	9	14	11	16	7	12	13	12	-8%	-25%	14
Harford	98	123	145	169	122	124	86	98	124	108	101	109	8%	11%	116
Howard	40	44	44	51	43	32	32	38	41	52	49	43	-12%	8%	43
Kent	7	6	4	6	7	10	9	7	9	9	7	6	-14%	-14%	7
Montgomery	297	289	282	258	218	202	134	133	164	181	203	212	4%	-29%	208
Prince George's	204	211	247	322	302	240	186	210	270	255	207	232	12%	14%	236
Queen Anne's	7	8	7	5	4	5	5	4	5	7	7	8	14%	14%	6
St. Mary's	43	42	59	45	37	26	23	24	29	23	21	21	0%	-51%	28
Somerset	8	8	14	15	13	10	14	14	11	9	9	9	0%	13%	11
Talbot	4	7	2	8	10	5	5	6	9	7	4	9	125%	125%	7
Washington	73	87	95	113	71	61	74	75	63	63	70	73	4%	0%	73
Wicomico	43	37	38	29	35	31	21	29	42	36	36	39	8%	-9%	36
Worcester	21	23	22	29	26	25	25	30	31	20	18	25	39%	19%	25
TOTAL	2,261	2,218	2,396	2,676	2,254	1,904	1,560	1,768	2,072	2,177	2,084	2,101	1%	-7%	2,139

Source: MD CHESSIE, Child Welfare (prior month)

Maryland Child Welfare Services Data

February-19

[Child Protective Services: Investigative Response, New](#)

	Mar-18	Apr-18	May-18	Jun-18	Jul-18	Aug-18	Sep-18	Oct-18	Nov-18	Dec-18	Jan-19	Feb-19	1 month Change	12-month Change	12-month Median
Allegany	13	20	31	17	15	25	16	19	17	17	17	13	-24%	0%	17
Anne Arundel	136	139	137	94	78	83	116	128	116	105	106	114	8%	-16%	115
Baltimore City*	302	369	405	255	240	258	241	336	288	225	243	232	-5%	-23%	257
Baltimore County	115	152	145	108	88	76	103	119	115	84	95	79	-17%	-31%	106
Calvert	10	13	15	6	6	10	9	12	9	13	10	13	30%	30%	10
Caroline	5	4	10	4	2	7	5	4	4	3	10	7	-30%	40%	5
Carroll	47	46	53	31	24	26	23	30	42	38	48	28	-42%	-40%	35
Cecil	23	34	34	21	16	17	29	33	27	24	39	24	-38%	4%	26
Charles	20	13	12	12	18	11	15	21	22	16	19	21	11%	5%	17
Dorchester	11	9	16	18	8	4	8	6	12	12	12	8	-33%	-27%	10
Frederick	30	38	35	12	23	21	26	33	29	25	26	24	-8%	-20%	26
Garrett	13	7	9	5	12	7	10	4	8	11	9	7	-22%	-46%	9
Harford	70	69	83	32	53	47	71	80	44	57	69	82	19%	17%	69
Howard	25	23	29	17	19	18	22	26	28	23	23	21	-9%	-16%	23
Kent	3	3	3	5	5	6	4	5	6	3	3	5	67%	67%	5
Montgomery	108	119	114	83	82	68	76	103	109	100	119	109	-8%	1%	106
Prince George's	119	125	198	127	98	88	113	163	119	81	127	114	-10%	-4%	119
Queen Anne's	4	2	Pending	1	1	2	Pending	2	2	2	3	2	-33%	-50%	2
St. Mary's	19	24	6	20	13	11	11	15	7	8	16	10	-38%	-47%	12
Somerset	4	6	22	3	3	7	5	5	2	3	3	6	100%	50%	5
Talbot	6	3	6	6	2	4	4	8	2	3	6	5	-17%	-17%	5
Washington	58	69	67	42	33	48	42	41	37	43	41	36	-12%	-38%	42
Wicomico	20	23	18	23	17	11	21	27	20	15	26	18	-31%	-10%	20
Worcester	12	10	15	14	11	15	14	12	8	6	15	6	-60%	-50%	12
TOTAL	1,173	1,320	1,463	956	867	870	984	1,232	1,073	917	1,085	984	-9%	-16%	1,029

Source: MD CHESSIE, Business Objects RE862R

Maryland Child Welfare Services Data

February-19

[Child Protective Services: Investigative Response, Completed](#)

	Mar-18	Apr-18	May-18	Jun-18	Jul-18	Aug-18	Sep-18	Oct-18	Nov-18	Dec-18	Jan-19	Feb-19	1 month Change	12-month Change	12-month Median
Allegany	20	16	23	23	20	16	18	23	14	16	22	10	-55%	-50%	19
Anne Arundel	124	122	132	142	143	116	82	97	118	107	117	103	-12%	-17%	118
Baltimore City*	384	335	268	357	322	360	193	250	211	263	241	239	-1%	-38%	266
Baltimore County	113	110	116	146	137	115	69	96	99	95	123	100	-19%	-12%	112
Calvert	17	7	12	12	10	10	6	7	11	16	10	9	-10%	-47%	10
Caroline	7	11	4	5	12	1	2	5	8	3	5	4	-20%	-43%	5
Carroll	36	30	52	60	37	27	23	23	23	38	43	39	-9%	8%	37
Cecil	21	32	28	27	36	21	11	14	8	37	31	37	19%	76%	28
Charles	26	21	22	17	9	14	12	12	21	15	27	12	-56%	-54%	16
Dorchester	15	7	12	10	15	20	6	5	6	7	13	15	15%	0%	11
Frederick	38	35	35	33	15	22	20	26	34	21	29	18	-38%	-53%	28
Garrett	7	14	9	11	7	10	5	13	3	10	10	6	-40%	-14%	10
Harford	45	47	59	79	51	85	59	54	60	64	61	66	8%	47%	60
Howard	21	23	22	25	30	18	16	23	17	26	29	21	-28%	0%	23
Kent	4	5	1	4	2	7	6	3	6	5	4	4	0%	0%	4
Montgomery	116	126	138	123	98	136	77	72	92	78	110	94	-15%	-19%	104
Prince George's	112	89	123	147	160	142	89	103	134	129	102	105	3%	-6%	118
Queen Anne's	3	3	2	2	0	2	1	1	0	2	2	4	100%	33%	2
St. Mary's	20	7	20	28	24	14	10	10	13	10	16	6	-63%	-70%	14
Somerset	4	0	21	5	6	3	5	8	4	3	3	2	-33%	-50%	4
Talbot	3	8	0	4	7	4	3	5	4	6	1	5	400%	67%	4
Washington	44	61	49	84	43	35	41	53	37	36	38	43	13%	-2%	43
Wicomico	26	22	27	17	21	21	13	14	26	15	23	12	-48%	-54%	21
Worcester	10	11	8	17	12	15	39	11	19	8	8	9	13%	-10%	11
TOTAL	1,216	1,142	1,183	1,378	1,217	1,214	806	928	968	1,010	1,068	963	-10%	-21%	1,105

Source: MD CHESSIE, Business Objects RE861R

Maryland Child Welfare Services Data

February-19

[Child Protective Services: Investigative Response, End of the Month](#)

	Mar-18	Apr-18	May-18	Jun-18	Jul-18	Aug-18	Sep-18	Oct-18	Nov-18	Dec-18	Jan-19	Feb-19	1 month Change	12-month Change	12-month Median
Allegany	10	14	22	16	11	20	18	14	17	18	13	16	23%	60%	16
Anne Arundel	253	270	275	227	162	129	163	194	192	190	179	190	6%	-25%	191
Baltimore City*	596	630	767	665	583	481	529	615	692	654	656	649	-1%	9%	640
Baltimore County	193	235	264	226	177	138	172	195	211	200	172	151	-12%	-22%	194
Calvert	16	22	25	19	15	15	18	23	21	18	18	22	22%	38%	19
Caroline	16	9	15	14	4	10	13	12	8	8	13	16	23%	0%	13
Carroll	70	86	87	58	45	44	44	51	70	70	75	64	-15%	-9%	67
Cecil	58	60	66	60	40	36	54	73	92	79	87	74	-15%	28%	63
Charles	46	38	28	23	32	29	32	41	42	43	35	44	26%	-4%	37
Dorchester	19	21	25	33	26	10	12	13	19	24	23	16	-30%	-16%	20
Frederick	34	37	37	16	24	23	29	36	31	35	32	38	19%	12%	33
Garrett	22	15	15	9	14	11	16	7	12	13	12	13	8%	-41%	13
Harford	123	145	169	122	124	86	98	124	108	101	109	125	15%	2%	123
Howard	44	44	51	43	32	32	38	41	52	49	43	43	0%	-2%	43
Kent	6	4	6	7	10	9	7	9	9	7	6	7	17%	17%	7
Montgomery	289	282	258	218	202	134	133	164	181	203	212	227	7%	-21%	208
Prince George's	211	247	322	302	240	186	210	270	255	207	232	241	4%	14%	241
Queen Anne's	8	7	5	4	5	5	4	5	7	7	8	6	-25%	-25%	6
St. Mary's	42	59	45	37	26	23	24	29	23	21	21	25	19%	-40%	26
Somerset	8	14	15	13	10	14	14	11	9	9	9	13	44%	63%	12
Talbot	7	2	8	10	5	5	6	9	7	4	9	9	0%	29%	7
Washington	87	95	113	71	61	74	75	63	63	70	73	66	-10%	-24%	72
Wicomico	37	38	29	35	31	21	29	42	36	36	39	45	15%	22%	36
Worcester	23	22	29	26	25	25	0	31	20	18	25	22	-12%	-4%	24
TOTAL	2,218	2,396	2,676	2,254	1,904	1,560	1,738	2,072	2,177	2,084	2,101	2,122	1%	-4%	2,112

Source: MD CHESSIE, Business Objects RE861R

Maryland Child Welfare Services Data

February-19

[Child Protective Services: TOTAL Findings for Completed Investigations](#)

	Mar-18	Apr-18	May-18	Jun-18	Jul-18	Aug-18	Sep-18	Oct-18	Nov-18	Dec-18	Jan-19	Feb-19	1-month Change	12-month Change	12-month Median
Allegany	32	17	32	15	31	10	24	8	12	16	38	16	-58%	-50%	17
Anne Arundel	188	199	199	242	226	188	134	146	178	186	227	170	-25%	-10%	188
Baltimore City	646	496	420	625	494	568	343	414	345	406	352	374	6%	-42%	417
Baltimore County	159	188	200	268	211	198	110	168	170	173	224	162	-28%	2%	181
Calvert	24	16	23	21	17	18	11	10	17	23	12	15	25%	-38%	17
Caroline	11	11	7	11	23	4	4	10	17	6	7	3	-57%	-73%	9
Carroll	54	41	96	105	63	44	45	43	45	56	75	66	-12%	22%	55
Cecil	28	68	62	79	63	35	23	22	15	84	62	68	10%	143%	62
Charles	35	27	35	26	13	15	20	13	28	23	47	16	-66%	-54%	25
Dorchester	27	17	22	20	28	24	16	6	13	15	24	27	13%	0%	21
Frederick	53	49	49	43	22	34	24	34	44	29	48	26	-46%	-51%	39
Garrett	15	45	21	19	11	25	7	18	3	16	15	16	7%	7%	16
Harford	65	89	103	136	98	177	94	86	94	113	109	135	24%	108%	101
Howard	33	33	26	43	54	26	24	26	18	29	43	27	-37%	-18%	28
Kent	4	5	1	6	2	10	8	6	6	6	5	3	-40%	-25%	6
Montgomery	177	195	200	203	153	252	139	146	130	118	168	166	-1%	-6%	167
Prince George's	189	151	189	241	286	264	150	153	249	243	162	177	9%	-6%	189
Queen Anne's	3	3	2	3	0	1	1	6	0	2	3	10	233%	233%	3
St. Mary's	26	1	45	44	38	31	14	14	19	13	23	13	-43%	-50%	21
Somerset	4	11	11	8	10	4	8	6	11	6	3	3	0%	-25%	7
Talbot	5	8	0	4	10	14	5	5	4	8	2	7	250%	40%	5
Washington	76	92	95	141	69	62	77	67	49	55	52	59	13%	-22%	68
Wicomico	51	33	34	26	28	33	17	30	38	18	36	14	-61%	-73%	32
Worcester	17	9	7	28	15	20	11	19	25	9	26	9	-65%	-47%	16
TOTAL	1,922	1,804	1,879	2,357	1,965	2,057	1,309	1,456	1,530	1,653	1,763	1,582	-10%	-18%	1,784

Source: MD CHESSIE, First Set of Files; Child Welfare R-1-4 - Findings Associated to Completed Investigations

Maryland Child Welfare Services Data

February-19

[Child Protective Services: TOTAL INDICATED Findings for Completed Investigations](#)

	Mar-18	Apr-18	May-18	Jun-18	Jul-18	Aug-18	Sep-18	Oct-18	Nov-18	Dec-18	Jan-19	Feb-19	1 month Change	12-month Change	12-month Median
Allegany	27	10	26	9	25	8	10	1	6	14	10	9	-10%	-67%	10
Anne Arundel	13	33	38	40	21	36	25	33	28	18	27	31	15%	138%	30
Baltimore City	174	101	99	122	104	142	78	115	70	77	71	60	-15%	-66%	100
Baltimore County	66	74	67	93	76	54	44	74	57	62	80	60	-25%	-9%	67
Calvert	6	7	12	5	6	5	10	9	10	11	7	12	71%	100%	8
Caroline	5	4	5	2	9	0	1	2	8	0	2	3	50%	-40%	3
Carroll	11	14	21	22	6	5	20	12	12	16	11	5	-55%	-55%	12
Cecil	14	28	20	30	30	18	14	7	3	38	19	36	89%	157%	20
Charles	11	4	9	9	6	3	8	4	7	10	10	7	-30%	-36%	8
Dorchester	0	13	10	3	2	4	10	0	0	7	4	4	0%	NA	4
Frederick	9	21	11	14	9	8	10	8	15	13	21	5	-76%	-44%	11
Garrett	11	41	14	12	7	21	3	11	2	8	11	14	27%	27%	11
Harford	8	24	19	43	20	48	27	31	20	35	37	65	76%	713%	29
Howard	8	3	6	15	20	4	8	4	4	2	14	10	-29%	25%	7
Kent	0	2	0	2	0	4	4	0	1	2	1	0	-100%	NA	1
Montgomery	54	54	66	42	53	80	44	49	45	39	67	74	10%	37%	54
Prince George's	34	43	48	76	61	30	47	32	49	54	32	40	25%	18%	45
Queen Anne's	2	1	1	1	0	0	0	6	0	2	2	9	350%	350%	1
St. Mary's	11	0	11	14	19	8	8	3	4	6	12	0	-100%	-100%	8
Somerset	0	7	0	4	1	0	0	3	1	2	1	0	-100%	NA	1
Talbot	0	5	0	1	5	1	2	1	1	1	0	4	NA	NA	1
Washington	24	26	20	24	12	19	31	13	16	12	14	20	43%	-17%	20
Wicomico	26	3	5	11	4	13	3	11	10	3	10	6	-40%	-77%	8
Worcester	12	3	0	11	8	13	5	9	7	3	2	2	0%	-83%	6
TOTAL	526	521	508	605	504	524	412	438	376	435	465	476	2%	-10%	490

Source: MD CHESSIE, First Set of Files; Child Welfare R-1-4 - Findings Associated to Completed Investigations

Maryland Child Welfare Services Data

February-19

[Child Protective Services: TOTAL UNSUBSTANTIATED Findings for Completed Investigations](#)

	Mar-18	Apr-18	May-18	Jun-18	Jul-18	Aug-18	Sep-18	Oct-18	Nov-18	Dec-18	Jan-19	Feb-19	1 month Change	12-month Change	12-month Median
Allegany	5	7	6	6	6	2	14	7	6	2	18	0	-100%	-100%	6
Anne Arundel	26	41	27	34	32	17	23	12	33	42	29	26	-10%	0%	28
Baltimore City\	64	43	38	73	31	65	47	56	35	37	44	41	-7%	-36%	44
Baltimore County	36	59	39	75	56	66	33	41	37	35	54	40	-26%	11%	41
Calvert	6	2	0	1	2	5	0	0	3	3	1	2	100%	-67%	2
Caroline	2	3	0	6	4	1	2	0	3	2	0	0	NA	-100%	2
Carroll	1	0	4	3	15	3	2	8	6	9	8	1	-88%	0%	4
Cecil	5	15	16	33	12	2	5	5	6	20	11	12	9%	140%	12
Charles	11	15	8	8	2	5	5	8	8	1	21	2	-90%	-82%	8
Dorchester	2	2	0	4	7	11	3	1	5	1	13	4	-69%	100%	4
Frederick	20	4	5	9	4	6	4	8	12	2	18	4	-78%	-80%	6
Garrett	1	2	7	5	3	0	0	3	0	2	0	0	NA	-100%	2
Harford	16	14	17	37	24	36	27	17	20	27	25	19	-24%	19%	22
Howard	6	12	2	10	10	8	6	9	1	6	9	5	-44%	-17%	7
Kent	1	0	0	3	1	1	3	0	0	0	1	0	-100%	-100%	1
Montgomery	45	40	31	51	26	82	32	29	25	23	21	30	43%	-33%	31
Prince George's	57	50	56	66	102	119	55	38	76	82	58	58	0%	2%	58
Queen Anne's	0	1	1	2	0	0	0	0	0	0	0	0	NA	NA	0
St. Mary's	7	1	0	7	10	17	2	1	0	0	1	0	-100%	-100%	1
Somerset	2	1	3	0	1	2	2	0	0	0	0	1	NA	-50%	1
Talbot	0	1	0	1	3	7	1	2	1	3	2	0	-100%	NA	1
Washington	12	12	11	28	7	16	11	8	11	6	6	5	-17%	-58%	11
Wicomico	6	2	10	4	6	5	2	9	10	5	3	1	-67%	-83%	5
Worcester	1	2	2	9	2	2	4	10	11	5	23	4	-83%	300%	4
TOTAL	332	329	283	475	366	478	283	272	309	313	366	255	-30%	-23%	321

Source: MD CHESSIE, First Set of Files; Child Welfare R-1-4 - Findings Associated to Completed Investigations

Maryland Child Welfare Services Data

February-19

[Child Protective Services: Findings for Completed Investigations -- Ruled Out](#)

	Mar-18	Apr-18	May-18	Jun-18	Jul-18	Aug-18	Sep-18	Oct-18	Nov-18	Dec-18	Jan-19	Feb-19	1 month Change	12-month Change	12-month Median
Allegany	11	9	22	24	11	24	7	43	10	11	10	7	-30%	-36%	11
Anne Arundel	149	125	134	168	173	135	86	101	117	126	171	113	-34%	-24%	130
Baltimore City	408	352	283	430	359	361	218	243	240	292	237	273	15%	-33%	288
Baltimore County	57	55	94	100	79	78	33	53	76	76	90	62	-31%	9%	76
Calvert	12	7	11	15	9	8	1	1	4	9	4	1	-75%	-92%	8
Caroline	4	4	2	3	10	3	1	8	6	4	5	0	-100%	-100%	4
Carroll	42	27	71	80	42	36	23	23	27	31	56	60	7%	43%	39
Cecil	9	25	26	16	21	15	4	10	6	26	32	20	-38%	122%	18
Charles	13	8	18	9	5	7	7	1	13	12	16	7	-56%	-46%	9
Dorchester	25	2	12	13	19	9	3	5	8	7	7	19	171%	-24%	9
Frederick	24	24	33	20	9	20	10	18	17	14	9	17	89%	-29%	18
Garrett	3	2	0	2	1	4	4	4	1	6	4	2	-50%	-33%	3
Harford	41	51	67	56	54	93	40	38	54	51	47	51	9%	24%	51
Howard	19	18	18	18	24	14	10	13	13	21	20	12	-40%	-37%	18
Kent	3	3	1	1	1	5	1	6	5	4	3	3	0%	0%	3
Montgomery	78	101	103	110	74	90	63	68	60	56	80	62	-23%	-21%	76
Prince George's	98	58	85	99	123	115	48	83	124	107	72	79	10%	-19%	92
Queen Anne's	1	1	0	0	0	1	1	0	0	0	1	1	0%	0%	1
St. Mary's	8	0	34	23	9	6	4	10	15	7	10	13	30%	63%	10
Somerset	2	3	8	4	8	2	6	3	10	4	2	2	0%	0%	4
Talbot	5	2	0	2	2	6	2	2	2	4	0	3	NA	-40%	2
Washington	40	54	64	89	50	27	35	46	22	37	32	34	6%	-15%	39
Wicomico	19	28	19	11	18	15	12	10	18	10	23	7	-70%	-63%	17
Worcester	4	4	5	8	5	5	2	0	7	1	1	3	200%	-25%	4
TOTAL	1,075	963	1,110	1,301	1,106	1,079	621	789	855	916	932	851	-9%	-21%	948

Source: MD CHESSIE, First Set of Files; Child Welfare R-1-4 - Findings Associated to Completed Investigations

Maryland Child Welfare Services Data

February-19

[Child Protective Services: Indicated Findings for Completed Investigations -- Physical Abuse](#)

	Mar-18	Apr-18	May-18	Jun-18	Jul-18	Aug-18	Sep-18	Oct-18	Nov-18	Dec-18	Jan-19	Feb-19	1-month Change	12-month Change	12-month Median
Allegany	0	1	1	0	0	2	2	1	1	0	2	1	-50%	NA	1
Anne Arundel	3	5	3	3	2	3	0	2	1	2	0	5	NA	67%	3
Baltimore City*	37	18	27	31	26	26	10	16	14	25	12	11	-8%	-70%	22
Baltimore County	7	6	9	9	16	5	3	5	7	2	7	7	0%	0%	7
Calvert	0	2	1	1	1	0	1	1	5	0	0	0	NA	NA	1
Caroline	2	0	1	1	1	0	0	1	0	0	0	0	NA	-100%	0
Carroll	0	2	3	5	1	0	0	0	4	2	3	1	-67%	NA	2
Cecil	6	3	2	4	2	3	2	0	0	2	4	2	-50%	-67%	2
Charles	6	0	1	2	0	1	0	3	3	1	3	0	-100%	-100%	1
Dorchester	0	0	2	0	2	0	0	0	0	1	2	0	-100%	NA	0
Frederick	0	4	3	3	0	4	1	3	1	0	5	2	-60%	NA	3
Garrett	0	0	0	0	0	2	0	1	1	2	1	0	-100%	NA	0
Harford	1	4	2	9	1	4	5	3	6	7	2	4	100%	300%	4
Howard	3	0	2	3	2	0	0	0	0	0	1	2	100%	-33%	1
Kent	0	1	0	0	0	1	1	0	0	0	1	0	-100%	NA	0
Montgomery	5	4	14	9	7	4	4	4	2	3	5	6	20%	20%	5
Prince George's	2	5	6	14	9	1	1	4	6	7	6	8	33%	300%	6
Queen Anne's	0	0	0	0	0	0	0	0	0	0	0	0	NA	NA	0
St. Mary's	4	0	5	1	3	2	0	0	0	0	3	0	-100%	-100%	1
Somerset	0	0	0	2	0	0	0	1	1	2	1	0	-100%	NA	0
Talbot	0	1	0	0	0	0	0	0	0	0	0	1	NA	NA	0
Washington	4	5	3	3	2	2	1	4	3	3	0	1	NA	-75%	3
Wicomico	5	1	1	2	0	3	0	0	1	0	0	1	NA	-80%	1
Worcester	1	0	0	0	2	1	0	0	1	2	1	0	-100%	-100%	1
TOTAL	86	62	86	102	77	64	31	49	57	61	59	52	-12%	-40%	62

Source: MD CHESSIE, First Set of Files; Child Welfare R-1-4 - Findings Associated to Completed Investigations

Maryland Child Welfare Services Data

February-19

[Child Protective Services: Indicated Findings for Completed Investigations -- Sexual Abuse](#)

	Mar-18	Apr-18	May-18	Jun-18	Jul-18	Aug-18	Sep-18	Oct-18	Nov-18	Dec-18	Jan-19	Feb-19	1 month Change	12-month Change	12-month Median
Allegany	2	1	1	2	1	0	1	0	0	1	1	2	100%	0%	1
Anne Arundel	4	11	12	16	8	10	10	6	5	5	7	4	-43%	0%	8
Baltimore City*	10	9	5	12	6	10	1	10	6	6	4	6	50%	-40%	6
Baltimore County	23	20	19	17	17	11	9	11	14	9	24	17	-29%	-26%	17
Calvert	0	0	4	1	3	1	0	1	3	1	2	0	-100%	NA	1
Caroline	1	4	0	1	4	0	0	0	1	0	2	1	-50%	0%	1
Carroll	1	1	1	4	0	1	2	1	1	4	0	0	NA	-100%	1
Cecil	2	4	6	2	0	6	4	3	1	2	1	2	100%	0%	2
Charles	3	0	1	0	0	1	2	0	2	2	2	3	50%	0%	2
Dorchester	0	1	2	0	0	0	0	0	0	0	1	2	100%	NA	0
Frederick	7	5	4	4	2	3	5	1	13	3	6	3	-50%	-57%	4
Garrett	0	0	2	1	0	0	0	1	1	2	1	0	-100%	NA	1
Harford	2	6	5	5	7	5	4	5	6	2	9	2	-78%	0%	5
Howard	4	1	0	5	7	1	2	0	1	2	4	5	25%	25%	2
Kent	0	0	0	0	0	0	1	0	0	2	0	0	NA	NA	0
Montgomery	27	16	19	23	27	9	15	17	19	12	38	30	-21%	11%	19
Prince George's	14	15	25	40	34	14	23	18	19	30	14	18	29%	29%	19
Queen Anne's	2	1	1	1	0	0	0	0	0	2	2	1	-50%	-50%	1
St. Mary's	2	0	5	5	2	5	0	3	3	3	6	0	-100%	-100%	3
Somerset	0	0	0	1	1	0	0	2	0	0	0	0	NA	NA	0
Talbot	0	1	0	1	3	0	2	0	0	1	0	1	NA	NA	1
Washington	2	4	0	1	3	3	2	1	2	2	4	6	50%	200%	2
Wicomico	9	2	3	2	4	9	3	3	1	2	7	5	-29%	-44%	3
Worcester	3	1	0	2	0	1	0	4	1	0	0	1	NA	-67%	1
TOTAL	118	103	115	146	129	90	86	87	99	93	135	109	-19%	-8%	106

Source: MD CHESSIE, First Set of Files; Child Welfare R-1-4 - Findings Associated to Completed Investigations

Maryland Child Welfare Services Data

February-19

[Child Protective Services: Indicated Findings for Completed Investigations -- Neglect](#)

	Mar-18	Apr-18	May-18	Jun-18	Jul-18	Aug-18	Sep-18	Oct-18	Nov-18	Dec-18	Jan-19	Feb-19	1 month Change	12-month Change	12-month Median
Allegany	25	8	24	7	24	6	7	0	5	13	7	6	-14%	-76%	7
Anne Arundel	6	17	23	21	11	22	15	25	22	11	20	22	10%	267%	21
Baltimore City*	126	73	67	79	72	106	67	89	50	46	55	43	-22%	-66%	70
Baltimore County	36	48	39	67	43	38	32	58	35	51	49	36	-27%	0%	41
Calvert	6	5	7	3	2	4	9	7	2	10	5	12	140%	100%	6
Caroline	2	0	4	0	4	0	1	1	7	0	0	2	NA	0%	1
Carroll	10	11	17	13	5	4	18	11	7	9	8	4	-50%	-60%	10
Cecil	6	21	12	24	28	9	8	4	2	34	14	32	129%	433%	13
Charles	2	4	7	7	6	1	6	1	2	7	5	4	-20%	100%	5
Dorchester	0	12	6	3	0	4	10	0	0	6	1	2	100%	NA	3
Frederick	2	12	4	7	7	1	4	4	1	10	10	0	-100%	-100%	4
Garrett	11	41	12	11	7	19	3	9	0	4	9	14	56%	27%	10
Harford	5	14	12	29	12	35	18	23	8	26	26	59	127%	1080%	21
Howard	1	2	4	7	11	3	6	4	3	0	9	3	-67%	200%	4
Kent	0	1	0	2	0	3	2	0	1	0	0	0	NA	NA	0
Montgomery	22	34	33	10	19	67	25	28	24	24	24	38	58%	73%	25
Prince George's	18	23	17	22	18	15	23	10	24	17	12	14	17%	-22%	18
Queen Anne's	0	0	0	0	0	0	0	6	0	0	0	8	NA	NA	0
St. Mary's	5	0	1	8	14	1	8	0	1	3	3	0	-100%	-100%	2
Somerset	0	7	0	1	0	0	0	0	0	0	0	0	NA	NA	0
Talbot	0	3	0	0	2	1	0	1	1	0	0	2	NA	NA	1
Washington	18	17	17	20	7	14	28	8	11	7	10	13	30%	-28%	14
Wicomico	12	0	1	7	0	1	0	8	8	1	3	0	-100%	-100%	1
Worcester	8	2	0	9	6	11	5	5	5	1	1	1	0%	-88%	5
TOTAL	321	355	307	357	298	365	295	302	219	280	271	315	16%	-2%	305

Source: MD CHESSIE, First Set of Files; Child Welfare R-1-4 - Findings Associated to Completed Investigations

Maryland Child Welfare Services Data

February-19

[Child Protective Services: Indicated Findings for Completed Investigations -- Mental Injury \(Abuse and Neglect\)](#)

	Mar-18	Apr-18	May-18	Jun-18	Jul-18	Aug-18	Sep-18	Oct-18	Nov-18	Dec-18	Jan-19	Feb-19	1 month Change	12-month Change	12-month Median
Allegany	0	0	0	0	0	0	0	0	0	0	0	0	NA	NA	0
Anne Arundel	0	0	0	0	0	0	0	0	0	0	0	0	NA	NA	0
Baltimore City*	0	0	0	0	0	0	0	0	0	1	1	0	-100%	NA	0
Baltimore County	0	0	0	0	0	0	0	0	0	0	0	0	NA	NA	0
Calvert	0	0	0	0	0	0	0	0	0	0	0	0	NA	NA	0
Caroline	0	0	0	0	0	0	0	0	0	0	0	0	NA	NA	0
Carroll	2	0	0	0	0	0	0	0	0	0	0	0	NA	-100%	0
Cecil	0	0	0	0	0	0	0	0	0	0	0	0	NA	NA	0
Charles	0	0	0	0	0	0	0	0	0	0	0	0	NA	NA	0
Dorchester	0	0	0	0	0	0	0	0	0	0	0	0	NA	NA	0
Frederick	0	0	0	0	0	0	0	0	0	0	0	0	NA	NA	0
Garrett	0	0	0	0	0	0	0	0	0	0	0	0	NA	NA	0
Harford	0	0	0	0	0	0	0	0	0	0	0	0	NA	NA	0
Howard	0	0	0	0	0	0	0	0	0	0	0	0	NA	NA	0
Kent	0	0	0	0	0	0	0	0	0	0	0	0	NA	NA	0
Montgomery	0	0	0	0	0	0	0	0	1	0	0	0	NA	NA	0
Prince George's	0	0	0	0	0	0	0	0	0	0	0	0	NA	NA	0
Queen Anne's	0	0	0	0	0	0	0	0	0	0	0	0	NA	NA	0
St. Mary's	0	0	0	0	0	0	0	0	0	0	0	0	NA	NA	0
Somerset	0	0	0	0	0	0	0	0	0	0	0	0	NA	NA	0
Talbot	0	0	0	0	0	0	0	0	0	0	0	0	NA	NA	0
Washington	0	0	0	0	0	0	0	0	0	0	0	0	NA	NA	0
Wicomico	0	0	0	0	0	0	2	0	1	0	0	0	NA	NA	0
Worcester	0	0	0	0	0	0	0	0	0	0	0	0	NA	NA	0
TOTAL	2	0	0	0	0	0	2	0	2	1	1	0	-100%	-100%	0

Source: MD CHESSIE, First Set of Files; Child Welfare R-1-4 - Findings Associated to Completed Investigations

Maryland Child Welfare Services Data

February-19

[Child Protective Services: Unsubstantiated Findings for Completed Investigation -- Physical Abuse](#)

	Mar-18	Apr-18	May-18	Jun-18	Jul-18	Aug-18	Sep-18	Oct-18	Nov-18	Dec-18	Jan-19	Feb-19	1-month Change	12-month Change	12-month Median
Allegany	1	1	2	1	0	0	1	2	0	1	1	0	-100%	-100%	1
Anne Arundel	3	6	1	2	1	2	0	2	2	7	4	3	-25%	0%	2
Baltimore City*	18	10	14	24	5	22	8	14	9	9	12	10	-17%	-44%	11
Baltimore County	8	11	14	17	8	8	4	10	9	6	5	8	60%	0%	8
Calvert	2	2	0	0	1	1	0	0	2	0	0	0	NA	-100%	0
Caroline	0	1	0	0	0	0	0	0	0	0	0	0	NA	NA	0
Carroll	0	0	4	0	1	2	1	7	2	1	3	1	-67%	NA	1
Cecil	2	5	0	0	0	1	1	3	0	6	0	2	NA	0%	1
Charles	5	5	3	2	0	1	0	3	1	0	0	0	NA	-100%	1
Dorchester	0	1	0	3	2	0	0	0	1	0	1	2	100%	NA	1
Frederick	2	0	2	2	2	1	0	0	1	0	0	0	NA	-100%	1
Garrett	0	0	0	0	0	0	0	0	0	1	0	0	NA	NA	0
Harford	6	4	5	5	6	5	8	2	6	3	7	7	0%	17%	6
Howard	1	2	2	6	4	1	0	1	0	3	1	0	-100%	-100%	1
Kent	1	0	0	1	1	0	0	0	0	0	0	0	NA	-100%	0
Montgomery	6	16	11	6	6	23	3	3	4	5	4	1	-75%	-83%	6
Prince George's	21	8	12	20	28	21	8	6	21	27	17	22	29%	5%	21
Queen Anne's	0	0	0	0	0	0	0	0	0	0	0	0	NA	NA	0
St. Mary's	2	0	0	1	2	0	0	1	0	0	0	0	NA	-100%	0
Somerset	1	0	2	0	1	0	0	0	0	0	0	0	NA	-100%	0
Talbot	0	0	0	0	0	0	0	1	0	1	0	0	NA	NA	0
Washington	5	4	0	3	3	2	2	2	1	2	1	0	-100%	-100%	2
Wicomico	1	0	1	1	0	2	0	0	3	2	1	0	-100%	-100%	1
Worcester	0	0	0	0	1	0	2	0	1	2	2	1	-50%	NA	1
TOTAL	85	76	73	94	72	92	38	57	63	76	59	57	-3%	-33%	73

Source: MD CHESSIE, First Set of Files; Child Welfare R-1-4 - Findings Associated to Completed Investigations

Maryland Child Welfare Services Data

February-19

[Child Protective Services: Unsubstantiated Findings for Completed Investigations -- Sexual Abuse](#)

	Mar-18	Apr-18	May-18	Jun-18	Jul-18	Aug-18	Sep-18	Oct-18	Nov-18	Dec-18	Jan-19	Feb-19	1 month Change	12-month Change	12-month Median
Allegany	0	1	0	2	0	2	1	4	0	1	0	0	NA	NA	1
Anne Arundel	6	10	9	12	8	2	4	5	11	8	2	2	0%	-67%	7
Baltimore City*	14	9	3	9	6	4	11	10	11	6	7	8	14%	-43%	9
Baltimore County	7	7	3	3	3	4	2	7	5	7	4	6	50%	-14%	5
Calvert	2	0	0	0	1	1	0	0	0	1	0	1	NA	-50%	0
Caroline	1	1	0	0	2	1	0	0	1	2	0	0	NA	-100%	1
Carroll	1	0	0	0	1	1	0	1	3	3	0	0	NA	-100%	1
Cecil	2	0	1	3	2	0	0	1	0	3	2	0	-100%	-100%	1
Charles	3	5	3	4	2	2	1	4	4	1	16	2	-88%	-33%	3
Dorchester	2	0	0	1	5	2	1	1	4	1	0	0	NA	-100%	1
Frederick	3	2	0	2	1	2	3	1	4	0	4	0	-100%	-100%	2
Garrett	0	0	0	1	0	0	0	0	0	1	0	0	NA	NA	0
Harford	3	2	5	8	0	4	3	2	2	4	3	4	33%	33%	3
Howard	1	2	0	1	3	5	1	4	1	1	7	2	-71%	100%	2
Kent	0	0	0	0	0	1	2	0	0	0	0	0	NA	NA	0
Montgomery	7	7	5	7	5	1	3	0	4	3	3	5	67%	-29%	5
Prince George's	10	7	13	11	13	12	10	5	9	12	7	6	-14%	-40%	10
Queen Anne's	0	0	0	0	0	0	0	0	0	0	0	0	NA	NA	0
St. Mary's	2	1	0	3	2	0	1	0	0	0	1	0	-100%	-100%	1
Somerset	1	0	1	0	0	0	2	0	0	0	0	1	NA	0%	0
Talbot	0	1	0	1	1	7	0	0	0	2	2	0	-100%	NA	1
Washington	1	5	5	10	1	3	3	3	2	3	5	2	-60%	100%	3
Wicomico	2	0	3	2	3	1	2	1	2	1	1	1	0%	-50%	2
Worcester	0	2	0	1	0	2	0	0	0	0	0	0	NA	NA	0
TOTAL	68	62	51	81	59	57	50	49	63	60	64	40	-38%	-41%	60

Source: MD CHESSIE, First Set of Files; Child Welfare R-1-4 - Findings Associated to Completed Investigations

Maryland Child Welfare Services Data

February-19

[Child Protective Services: Unsubstantiated Findings for Completed Investigations -- Neglect](#)

	Mar-18	Apr-18	May-18	Jun-18	Jul-18	Aug-18	Sep-18	Oct-18	Nov-18	Dec-18	Jan-19	Feb-19	1 month Change	12-month Change	12-month Median
Allegany	4	5	4	3	6	0	12	1	6	0	17	0	-100%	-100%	4
Anne Arundel	17	25	16	20	23	13	19	5	20	27	23	21	-9%	24%	20
Baltimore City*	32	24	21	40	20	39	28	32	15	21	25	23	-8%	-28%	25
Baltimore County	21	41	22	55	45	54	27	24	23	22	45	26	-42%	24%	27
Calvert	2	0	0	1	0	3	0	0	1	2	1	1	0%	-50%	1
Caroline	1	1	0	6	2	0	2	0	2	0	0	0	NA	-100%	1
Carroll	0	0	0	3	13	0	1	0	1	5	5	0	-100%	NA	1
Cecil	1	10	15	30	10	1	4	1	6	11	9	10	11%	900%	10
Charles	3	5	2	2	0	2	4	1	3	0	5	0	-100%	-100%	2
Dorchester	0	1	0	0	0	9	2	0	0	0	12	2	-83%	NA	0
Frederick	15	2	3	5	1	3	1	7	7	2	14	4	-71%	-73%	4
Garrett	1	2	7	4	3	0	0	3	0	0	0	0	NA	-100%	1
Harford	6	8	7	24	18	26	16	13	12	20	15	8	-47%	33%	14
Howard	4	8	0	3	3	2	5	4	0	2	1	3	200%	-25%	3
Kent	0	0	0	2	0	0	1	0	0	0	1	0	-100%	NA	0
Montgomery	31	17	14	38	15	58	26	26	17	15	14	24	71%	-23%	21
Prince George's	26	35	31	35	61	86	37	27	46	43	33	30	-9%	15%	35
Queen Anne's	0	1	1	2	0	0	0	0	0	0	0	0	NA	NA	0
St. Mary's	3	0	0	3	6	17	1	0	0	0	0	0	NA	-100%	0
Somerset	0	1	0	0	0	2	0	0	0	0	0	0	NA	NA	0
Talbot	0	0	0	0	2	0	1	1	1	0	0	0	NA	NA	0
Washington	6	3	6	11	3	11	6	3	8	1	0	3	NA	-50%	5
Wicomico	3	2	6	1	3	2	0	8	5	2	1	0	-100%	-100%	2
Worcester	1	0	1	8	1	0	2	10	10	3	21	3	-86%	200%	3
TOTAL	177	191	156	296	235	328	195	166	183	176	242	158	-35%	-11%	187

Source: MD CHESSIE, First Set of Files; Child Welfare R-1-4 - Findings Associated to Completed Investigations

Maryland Child Welfare Services Data

February-19

[Child Protective Services: Unsubstantiated Findings for Completed Investigations -- Mental Injury \(Abuse and Neglect\)](#)

	Mar-18	Apr-18	May-18	Jun-18	Jul-18	Aug-18	Sep-18	Oct-18	Nov-18	Dec-18	Jan-19	Feb-19	1 month Change	12-month Change	12-month Median
Allegany	0	0	0	0	0	0	0	0	0	0	0	0	NA	NA	0
Anne Arundel	0	0	0	0	0	0	0	0	0	0	0	0	NA	NA	0
Baltimore City*	0	0	0	0	0	0	0	0	0	0	0	0	NA	NA	0
Baltimore County	0	0	0	0	0	0	0	0	0	0	0	0	NA	NA	0
Calvert	0	0	0	0	0	0	0	0	0	0	0	0	NA	NA	0
Caroline	0	0	0	0	0	0	0	0	0	0	0	0	NA	NA	0
Carroll	0	0	0	0	0	0	0	0	0	0	0	0	NA	NA	0
Cecil	0	0	0	0	0	0	0	0	0	0	0	0	NA	NA	0
Charles	0	0	0	0	0	0	0	0	0	0	0	0	NA	NA	0
Dorchester	0	0	0	0	0	0	0	0	0	0	0	0	NA	NA	0
Frederick	0	4	0	0	0	0	0	0	0	0	0	0	NA	NA	0
Garrett	0	0	0	0	0	0	0	0	0	0	0	0	NA	NA	0
Harford	0	0	0	0	0	0	0	0	0	1	0	0	NA	NA	0
Howard	0	0	0	0	0	0	0	0	0	0	0	0	NA	NA	0
Kent	0	0	0	0	0	0	0	0	0	0	0	0	NA	NA	0
Montgomery	0	0	1	0	0	0	0	0	0	1	0	0	NA	NA	0
Prince George's	0	0	0	0	0	0	0	0	1	0	0	0	NA	NA	0
Queen Anne's	0	0	0	0	0	0	0	0	0	0	0	0	NA	NA	0
St. Mary's	0	0	0	0	0	0	0	0	0	0	0	0	NA	NA	0
Somerset	0	0	0	0	0	0	0	0	0	0	0	0	NA	NA	0
Talbot	0	0	0	0	0	0	0	0	0	0	0	0	NA	NA	0
Washington	0	0	0	0	0	0	0	2	1	0	0	0	NA	NA	0
Wicomico	0	0	0	0	0	0	2	0	0	0	0	0	NA	NA	0
Worcester	0	0	0	0	0	0	0	0	0	0	0	0	NA	NA	0
TOTAL	0	4	1	0	0	0	2	2	2	2	0	0	NA	NA	1

Source: MD CHESSIE, MD CHESSIE, First Set of Files; Child Welfare R-1-4 - Findings Associated to Completed Investigations

Maryland Child Welfare Services Data

February-19

[In-Home Services: Beginning of Month](#)

	Mar-18	Apr-18	May-18	Jun-18	Jul-18	Aug-18	Sep-18	Oct-18	Nov-18	Dec-18	Jan-19	Feb-19	1-month Change	12-month Change	12-month Median
Allegany	56	50	52	61	67	59	61	61	56	53	50	61	22%	9%	58
Anne Arundel	167	163	167	177	177	172	192	179	191	196	206	199	-3%	19%	178
Baltimore City	529	477	483	466	457	443	454	482	506	507	464	442	-5%	-16%	472
Baltimore County	354	365	353	362	364	382	383	371	376	404	392	404	3%	14%	374
Calvert	41	27	20	28	31	33	30	28	19	14	16	24	50%	-41%	28
Caroline	21	18	19	13	20	23	22	22	17	23	22	20	-9%	-5%	21
Carroll	55	59	56	63	66	69	75	70	79	74	71	75	6%	36%	70
Cecil	295	66	65	65	58	49	46	49	47	41	61	58	-5%	-80%	58
Charles	57	66	62	78	60	56	53	50	52	45	46	39	-15%	-32%	55
Dorchester	24	24	31	31	33	30	34	33	20	20	21	22	5%	-8%	27
Frederick	66	69	63	56	51	45	44	47	43	43	44	44	0%	-33%	46
Garrett	33	29	27	28	28	22	22	29	33	33	33	31	-6%	-6%	29
Harford	41	41	45	52	51	43	34	45	52	37	43	57	33%	39%	44
Howard	48	52	57	58	46	54	60	68	74	78	76	72	-5%	50%	59
Kent	13	13	14	18	16	17	17	20	18	11	11	10	-9%	-23%	15
Montgomery	91	96	94	91	92	89	104	101	87	83	74	87	18%	-4%	91
Prince George's	133	123	119	116	116	112	125	117	132	145	148	156	5%	17%	124
Queen Anne's	27	18	21	17	16	11	9	12	15	21	21	13	-38%	-52%	17
St. Mary's	34	30	29	29	30	30	30	37	32	27	33	32	-3%	-6%	30
Somerset	26	31	32	29	28	26	27	25	26	29	35	33	-6%	27%	29
Talbot	18	14	20	18	18	25	20	17	13	15	19	14	-26%	-22%	18
Washington	84	86	92	91	70	57	56	59	57	69	77	76	-1%	-10%	73
Wicomico	77	78	80	76	73	73	65	73	73	71	77	81	5%	5%	75
Worcester	86	82	82	79	71	66	62	60	62	65	67	72	7%	-16%	69
TOTAL	2,376	2,077	2,083	2,102	2,039	1,986	2,025	2,055	2,080	2,104	2,107	2,122	1%	-11%	2,082

Source: LDSS raw data

Maryland Child Welfare Services Data

February-19

[In-Home Services: New Cases](#)

	Mar-18	Apr-18	May-18	Jun-18	Jul-18	Aug-18	Sep-18	Oct-18	Nov-18	Dec-18	Jan-19	Feb-19	1 month Change	12-month Change	12-month Median
Allegany	23	23	22	25	17	19	21	18	23	19	28	11	-61%	-52%	22
Anne Arundel	50	58	60	57	45	65	52	57	53	62	63	44	-30%	-12%	57
Baltimore City	117	145	139	133	114	153	172	152	138	122	127	113	-11%	-3%	136
Baltimore County	58	58	56	66	53	76	46	68	83	68	71	65	-8%	12%	66
Calvert	13	7	13	14	12	9	8	6	6	8	17	10	-41%	-23%	10
Caroline	6	9	2	9	5	6	4	5	8	1	7	2	-71%	-67%	6
Carroll	32	19	30	28	28	31	28	30	31	24	31	20	-35%	-38%	29
Cecil	23	26	15	15	19	17	28	18	20	12	18	15	-17%	-35%	18
Charles	17	10	25	17	11	10	8	12	8	8	8	10	25%	-41%	10
Dorchester	8	8	8	8	5	13	5	4	5	12	13	5	-62%	-38%	8
Frederick	17	14	13	13	8	10	11	13	17	13	17	11	-35%	-35%	13
Garrett	5	6	9	7	7	6	10	9	6	2	5	4	-20%	-20%	6
Harford	14	11	16	11	10	8	11	23	6	14	18	8	-56%	-43%	11
Howard	18	22	16	15	13	11	14	17	15	15	16	14	-13%	-22%	15
Kent	1	3	4	1	3	1	4	1	5	3	4	2	-50%	100%	3
Montgomery	13	11	7	16	0	28	8	5	9	24	23	16	-30%	23%	12
Prince George's	45	47	62	37	40	58	51	58	55	55	48	45	-6%	0%	50
Queen Anne's	4	8	3	3	3	2	5	6	11	5	1	5	400%	25%	5
St. Mary's	0	1	2	5	7	3	12	7	7	8	9	9	0%	NA	7
Somerset	11	13	9	3	4	9	9	8	7	8	8	8	0%	-27%	8
Talbot	4	10	6	5	14	5	5	2	7	7	6	4	-33%	0%	6
Washington	39	45	48	33	25	19	32	27	33	33	24	29	21%	-26%	33
Wicomico	10	9	18	15	10	8	20	11	8	10	12	11	-8%	10%	11
Worcester	5	7	8	5	5	9	3	6	4	8	7	3	-57%	-40%	6
TOTAL	533	570	591	541	458	576	567	563	565	541	581	464	-20%	-13%	564

Source: LDSS raw data

Maryland Child Welfare Services Data

February-19

[In-Home Services: Closed Cases](#)

	Mar-18	Apr-18	May-18	Jun-18	Jul-18	Aug-18	Sep-18	Oct-18	Nov-18	Dec-18	Jan-19	Feb-19	1 month Change	12-month Change	12-month Median
Allegany	29	21	13	19	25	17	21	23	26	22	17	18	6%	-38%	21
Anne Arundel	54	54	50	56	50	45	66	45	55	52	70	46	-34%	-15%	53
Baltimore City	170	139	166	151	128	142	144	139	144	161	160	168	5%	-1%	148
Baltimore County	47	70	49	63	55	75	49	63	55	80	59	85	44%	81%	61
Calvert	8	14	5	11	10	12	10	15	11	6	9	16	78%	100%	11
Caroline	9	8	8	2	2	7	4	10	2	2	9	7	-22%	-22%	7
Carroll	28	22	23	25	25	25	33	21	36	27	27	22	-19%	-21%	25
Cecil	252	27	19	22	28	20	25	20	26	10	21	13	-38%	-95%	22
Charles	8	14	11	29	12	13	11	10	15	7	7	11	57%	38%	11
Dorchester	4	4	5	5	8	9	6	17	5	5	12	13	8%	225%	6
Frederick	14	20	20	18	14	11	8	17	17	12	17	7	-59%	-50%	16
Garrett	9	8	8	7	13	6	3	5	6	2	7	6	-14%	-33%	7
Harford	14	7	9	12	18	17	0	16	21	8	4	6	50%	-57%	11
Howard	14	18	15	27	5	5	6	11	11	17	20	10	-50%	-29%	13
Kent	1	2	0	3	2	1	3	3	3	3	5	2	-60%	100%	3
Montgomery	8	13	10	15	0	13	11	19	13	33	10	17	70%	113%	13
Prince George's	55	51	65	35	44	45	59	43	42	52	40	52	30%	-5%	48
Queen Anne's	13	5	7	4	8	4	2	3	5	5	9	3	-67%	-77%	5
St. Mary's	4	2	2	4	7	3	5	12	12	2	10	10	0%	150%	5
Somerset	6	12	12	4	6	8	11	7	4	2	10	10	0%	67%	8
Talbot	8	4	8	5	7	10	8	6	5	3	11	4	-64%	-50%	7
Washington	37	39	59	54	38	20	26	29	23	25	27	26	-4%	-30%	28
Wicomico	4	7	22	18	10	16	12	11	10	6	8	19	138%	375%	11
Worcester	9	7	11	13	10	13	5	4	1	6	2	16	700%	78%	8
TOTAL	805	568	597	602	525	537	528	549	548	548	571	587	3%	-27%	559

Source: LDSS raw data

Maryland Child Welfare Services Data

February-19

[In-Home Services: End of Month](#)

	Mar-18	Apr-18	May-18	Jun-18	Jul-18	Aug-18	Sep-18	Oct-18	Nov-18	Dec-18	Jan-19	Feb-19	1 month Change	12-month Change	12-month Median
Allegany	50	52	61	67	59	61	61	56	53	50	61	54	-11%	8%	58
Anne Arundel	163	167	177	178	172	192	178	191	196	206	199	197	-1%	21%	185
Baltimore City	476	483	456	448	443	454	482	495	507	464	442	387	-12%	-19%	460
Baltimore County	365	353	360	365	362	383	371	376	404	392	404	384	-5%	5%	374
Calvert	46	20	28	31	33	30	28	19	14	16	24	18	-25%	-61%	26
Caroline	18	19	13	20	23	22	22	17	23	22	20	15	-25%	-17%	20
Carroll	59	56	63	66	69	75	70	79	74	71	75	73	-3%	24%	71
Cecil	66	65	61	58	49	46	49	47	41	61	58	60	3%	-9%	58
Charles	66	62	76	66	56	53	50	52	45	46	39	38	-3%	-42%	53
Dorchester	28	28	34	34	30	34	30	20	20	27	22	14	-36%	-50%	28
Frederick	69	63	56	51	45	44	47	43	43	44	44	48	9%	-30%	46
Garrett	29	27	28	28	22	22	29	33	33	33	31	29	-6%	0%	29
Harford	41	45	52	51	43	34	45	52	37	43	57	59	4%	44%	45
Howard	52	56	58	46	54	60	68	74	78	76	72	76	6%	46%	64
Kent	13	14	18	16	17	17	20	18	11	11	10	10	0%	-23%	15
Montgomery	96	94	91	92	92	104	101	87	83	74	87	86	-1%	-10%	92
Prince George's	123	119	116	118	112	125	117	132	145	148	156	149	-4%	21%	124
Queen Anne's	18	21	17	16	11	9	12	15	21	21	13	15	15%	-17%	16
St. Mary's	30	29	29	30	30	30	37	32	27	33	32	32	0%	7%	30
Somerset	31	32	29	28	26	27	25	26	29	35	33	33	0%	6%	29
Talbot	14	20	18	18	25	20	17	13	15	19	14	14	0%	0%	18
Washington	86	92	81	70	57	56	59	57	69	77	76	74	-3%	-14%	72
Wicomico	83	80	76	73	73	65	73	73	71	77	81	73	-10%	-12%	73
Worcester	82	82	79	71	66	62	60	62	65	67	72	59	-18%	-28%	67
TOTAL	2,104	2,079	2,077	2,041	1,969	2,025	2,051	2,069	2,104	2,113	2,122	1,997	-6%	-5%	2,073

Source: LDSS raw data

Maryland Child Welfare Services Data

February-19

[OOH Placement: Beginning of Month](#)

	Mar-18	Apr-18	May-18	Jun-18	Jul-18	Aug-18	Sep-18	Oct-18	Nov-18	Dec-18	Jan-19	Feb-19	1-month Change	12-month Change	12-month Median
Allegany	101	94	94	92	85	77	77	76	70	70	65	67	3%	-34%	77
Anne Arundel	129	127	127	129	133	123	123	118	121	121	123	118	-4%	-9%	123
Baltimore City*	1,929	1,949	1,955	1,967	1,957	1,962	1,962	1,936	1,938	1,936	1,930	1899	-2%	-2%	1,944
Baltimore County	560	564	564	574	578	577	577	570	578	568	570	570	0%	2%	570
Calvert	52	52	52	55	56	57	57	58	61	62	60	54	-10%	4%	57
Caroline	28	27	27	27	27	27	27	25	25	25	24	24	0%	-14%	27
Carroll	68	70	70	62	62	69	69	67	68	68	68	70	3%	3%	68
Cecil	152	146	146	146	149	153	153	145	148	150	153	143	-7%	-6%	149
Charles	91	89	89	84	81	80	80	72	69	68	71	70	-1%	-23%	80
Dorchester	30	28	28	28	27	26	26	24	22	22	22	22	0%	-27%	26
Frederick	76	78	78	75	77	78	78	74	74	72	69	65	-6%	-14%	76
Garrett	66	70	70	69	69	62	62	58	55	52	54	58	7%	-12%	62
Harford	177	182	182	205	206	202	202	205	209	209	207	211	2%	19%	205
Howard	57	56	56	58	57	58	58	68	67	63	64	62	-3%	9%	58
Kent	6	6	6	6	7	7	7	5	5	5	5	6	20%	0%	6
Montgomery	422	423	423	417	420	419	419	423	424	412	411	412	0%	-2%	420
Prince George's	508	507	507	506	499	519	519	511	514	515	516	513	-1%	1%	512
Queen Anne's	9	9	9	9	9	9	9	9	9	9	9	8	-11%	-11%	9
St. Mary's	74	71	71	67	66	65	65	65	59	57	50	54	8%	-27%	65
Somerset	19	19	19	20	20	20	20	20	19	15	15	10	-33%	-47%	19
Talbot	15	14	14	13	13	13	13	13	13	12	12	12	0%	-20%	13
Washington	127	127	127	134	136	143	143	142	144	146	147	144	-2%	13%	143
Wicomico	32	31	31	31	29	31	31	30	31	30	30	31	3%	-3%	31
Worcester	35	36	36	34	35	32	32	32	32	31	29	29	0%	-17%	32
TOTAL	4,763	4,775	4,781	4,808	4,798	4,809	4,809	4,746	4,755	4,718	4,704	4,652	-1%	-2%	4,769

Source: MD CHESSIE/ University of Maryland School of Social Work OOH Served report.

*NOTE: Baltimore City continues to report raw data in lieu of MD CHESSIE data. Due to late data entries, beginning of the month, plus new placements, minus exits, will not equal the end of the month.

Maryland Child Welfare Services Data

February-19

[OOH Placement: New Placements](#)

	Mar-18	Apr-18	May-18	Jun-18	Jul-18	Aug-18	Sep-18	Oct-18	Nov-18	Dec-18	Jan-19	Feb-19	1 month Change	12-month Change	12-month Median
Allegany	2	10	5	1	4	7	1	1	4	1	6	6	0%	200%	4
Anne Arundel	8	8	5	9	3	4	1	4	3	6	0	1	NA	-88%	4
Baltimore City*	94	112	104	87	76	98	85	81	70	47	54	50	-7%	-47%	83
Baltimore County	23	19	14	24	16	12	19	20	19	10	13	16	23%	-30%	18
Calvert	2	1	4	3	1	3	0	3	2	1	0	4	NA	100%	2
Caroline	0	0	2	0	1	0	0	0	0	0	1	0	-100%	NA	0
Carroll	4	2	1	2	10	2	3	8	0	2	4	0	-100%	-100%	2
Cecil	3	2	2	3	5	2	4	8	4	2	1	4	300%	33%	3
Charles	3	4	0	0	2	2	1	1	2	6	2	2	0%	-33%	2
Dorchester	0	0	0	0	0	0	0	0	0	0	0	0	NA	NA	0
Frederick	3	0	3	4	6	0	7	3	2	1	0	4	NA	33%	3
Garrett	5	3	3	3	5	6	1	5	1	6	5	3	-40%	-40%	4
Harford	10	10	20	12	4	6	7	10	5	8	22	10	-55%	0%	10
Howard	2	0	3	0	2	3	12	3	3	2	8	6	-25%	200%	3
Kent	0	0	0	1	0	0	0	0	0	0	1	0	-100%	NA	0
Montgomery	20	8	20	14	14	4	22	16	14	13	26	30	15%	50%	15
Prince George's	21	8	17	8	26	7	18	14	27	12	21	14	-33%	-33%	16
Queen Anne's	0	0	0	0	0	0	0	0	0	0	0	0	NA	NA	0
St. Mary's	1	7	0	0	2	5	0	0	4	1	4	2	-50%	100%	2
Somerset	0	0	2	0	0	1	1	1	0	0	0	0	NA	NA	0
Talbot	0	0	0	0	9	0	0	0	0	0	0	0	NA	NA	0
Washington	4	14	6	6	0	7	4	3	3	3	1	1	0%	-75%	4
Wicomico	0	1	1	1	2	1	1	0	0	0	0	1	NA	NA	1
Worcester	1	3	1	2	1	2	0	0	0	0	0	0	NA	-100%	1
TOTAL	206	212	213	180	189	172	187	181	163	121	169	154	-9%	-25%	181

Source: MD CHESSIE/ University of Maryland School of Social Work OOH Served report

*NOTE: Baltimore City continues to report raw data in lieu of MD CHESSIE data. Due to late data entries, beginning of the month, plus new placements, minus exits, will not equal the end of the month.

Maryland Child Welfare Services Data

February-19

[OOH Placement: Children Exiting](#)

	Mar-18	Apr-18	May-18	Jun-18	Jul-18	Aug-18	Sep-18	Oct-18	Nov-18	Dec-18	Jan-19	Feb-19	1 month Change	12-month Change	12-month Median
Allegany	9	7	10	9	9	4	5	7	4	6	4	6	50%	-33%	7
Anne Arundel	8	5	4	4	13	5	5	1	4	4	7	4	-43%	-50%	5
Baltimore City*	97	149	112	118	72	81	58	56	64	42	48	30	-38%	-69%	68
Baltimore County	20	7	17	25	16	21	13	13	29	13	10	10	0%	-50%	15
Calvert	1	3	0	2	0	2	0	0	5	4	6	1	-83%	0%	2
Caroline	1	0	1	0	0	2	1	0	0	1	1	1	0%	0%	1
Carroll	2	4	7	2	3	5	2	6	2	0	2	4	100%	100%	3
Cecil	6	2	2	0	2	5	8	4	2	0	11	6	-45%	0%	3
Charles	0	4	4	4	2	7	2	1	0	1	3	0	-100%	NA	2
Dorchester	2	0	0	1	1	1	1	2	0	0	0	0	NA	-100%	1
Frederick	1	2	3	2	5	1	6	3	4	4	4	2	-50%	100%	3
Garrett	1	1	6	3	12	9	1	8	4	4	1	0	-100%	-100%	4
Harford	8	1	2	6	8	2	7	6	4	4	13	3	-77%	-63%	5
Howard	3	1	0	0	1	1	3	4	8	1	10	2	-80%	-33%	2
Kent	0	0	0	0	0	0	0	0	0	0	0	0	NA	NA	0
Montgomery	13	10	15	8	14	8	16	12	20	7	21	18	-14%	38%	14
Prince George's	12	9	7	13	5	16	7	10	19	6	13	16	23%	33%	11
Queen Anne's	0	0	0	0	0	0	0	0	0	0	1	0	-100%	NA	0
St. Mary's	3	4	7	1	0	2	2	4	7	10	0	1	NA	-67%	3
Somerset	0	0	1	0	0	1	1	2	4	0	5	0	-100%	NA	1
Talbot	1	1	0	0	0	0	0	0	1	0	0	1	NA	0%	0
Washington	4	6	8	3	1	5	5	1	1	1	4	0	-100%	-100%	4
Wicomico	1	2	1	2	0	1	2	0	0	0	0	0	NA	-100%	1
Worcester	0	5	0	1	3	0	2	1	0	2	0	0	NA	NA	1
TOTAL	193	223	207	204	167	179	147	141	182	110	164	105	-36%	-46%	173

Source: MD CHESSIE/ University of Maryland School of Social Work OOH Served report

*NOTE: Baltimore City continues to report raw data in lieu of MD CHESSIE data. Due to late data entries, beginning of the month, plus new placements, minus exits, will not equal the end of the month.

Maryland Child Welfare Services Data

February-19

[OOH Placement: End of Month](#)

	Mar-18	Apr-18	May-18	Jun-18	Jul-18	Aug-18	Sep-18	Oct-18	Nov-18	Dec-18	Jan-19	Feb-19	1 month Change	12-month Change	12-month Median
Allegany	94	97	92	85	77	80	76	70	70	65	67	68	1%	-28%	77
Anne Arundel	127	128	129	133	123	123	118	121	121	123	118	117	-1%	-8%	123
Baltimore City*	1,949	1,955	1,967	1,957	1,962	1,938	1,941	1,974	1,978	1,929	1,927	1917	-1%	-2%	1,952
Baltimore County	564	575	574	578	577	568	570	578	568	570	570	568	0%	1%	570
Calvert	52	51	55	56	57	58	58	61	62	60	54	57	6%	10%	57
Caroline	27	27	27	27	27	26	25	25	25	24	24	23	-4%	-15%	26
Carroll	70	68	62	62	69	66	67	68	68	68	70	67	-4%	-4%	68
Cecil	146	146	146	149	153	150	145	148	150	153	143	141	-1%	-3%	147
Charles	89	90	84	81	80	74	72	69	68	71	70	72	3%	-19%	73
Dorchester	28	28	28	27	26	25	24	22	22	22	22	22	0%	-21%	25
Frederick	78	76	75	77	78	77	74	74	72	69	65	67	3%	-14%	75
Garrett	70	72	69	69	62	59	58	55	52	54	58	61	5%	-13%	60
Harford	182	191	205	206	202	206	205	209	209	207	211	213	1%	17%	206
Howard	56	55	58	57	58	60	68	67	63	64	62	66	6%	18%	61
Kent	6	6	6	7	7	6	5	5	5	5	6	6	0%	0%	6
Montgomery	423	419	417	420	419	413	423	424	412	411	412	423	3%	0%	419
Prince George's	507	505	506	499	519	505	511	514	515	516	513	506	-1%	0%	509
Queen Anne's	9	9	9	9	9	9	9	9	9	9	8	8	0%	-11%	9
St. Mary's	71	74	67	66	65	67	65	59	57	50	54	54	0%	-24%	65
Somerset	19	19	20	20	20	20	20	19	15	15	10	10	0%	-47%	19
Talbot	14	13	13	13	13	13	13	13	12	12	12	11	-8%	-21%	13
Washington	127	136	134	136	143	141	142	144	146	147	144	146	1%	15%	143
Wicomico	31	31	31	29	31	31	30	31	30	30	31	32	3%	3%	31
Worcester	36	34	34	35	32	34	32	32	31	29	29	29	0%	-19%	32
TOTAL	4,775	4,805	4,808	4,798	4,809	4,749	4,751	4,791	4,760	4,703	4,680	4,684	0%	-2%	4,768

Revised: 11/2016

MD CHESSIE/ University of Maryland School of Social Work OOH Served report

*NOTE: Baltimore City continues to report raw data in lieu of MD CHESSIE data. Due to late data entries, beginning of the month, plus new placements, minus exits, will not equal the end of the month.

Maryland Child Welfare Services Data

February-19

[OOH Placement: End of Month: Children in Family Homes - ALL AGES](#)

	Mar-18	Apr-18	May-18	Jun-18	Jul-18	Aug-18	Sep-18	Oct-18	Nov-18	Dec-18	Jan-19	Feb-19	1-month Change	12-month Change	12-month Median
Allegany	85	88	82	74	66	68	68	63	63	58	61	61	0%	-28%	67
Anne Arundel	86	87	86	90	83	78	77	80	78	81	79	76	-4%	-12%	81
Baltimore City*	1,567	1,578	1,567	1,561	1,523	1,492	1,494	1,534	1,552	1,544	1,495	1491	0%	-5%	1,539
Baltimore County	368	367	365	363	372	354	350	362	351	348	343	343	0%	-7%	358
Calvert	37	38	42	42	42	40	40	42	43	41	34	37	9%	0%	41
Caroline	18	19	20	18	18	16	11	11	15	14	15	14	-7%	-22%	16
Carroll	47	46	36	31	37	36	37	38	41	40	43	42	-2%	-11%	39
Cecil	108	109	111	112	115	109	105	108	109	111	102	98	-4%	-9%	109
Charles	64	64	63	58	57	52	48	46	46	43	42	47	12%	-27%	50
Dorchester	12	12	14	12	13	12	11	10	10	12	12	14	17%	17%	12
Frederick	48	46	47	50	51	50	48	49	46	44	42	44	5%	-8%	48
Garrett	50	53	50	52	45	42	38	32	30	34	42	38	-10%	-24%	42
Harford	122	128	141	146	133	145	148	149	150	153	158	156	-1%	28%	147
Howard	37	36	37	38	38	39	45	44	42	44	39	45	15%	22%	39
Kent	3	3	3	3	3	3	3	3	3	3	4	4	0%	33%	3
Montgomery	309	302	303	301	296	294	300	305	295	296	303	314	4%	2%	302
Prince George's	357	356	361	360	377	360	361	356	360	360	351	350	0%	-2%	360
Queen Anne's	6	6	6	6	6	6	5	6	6	6	6	6	0%	0%	6
St. Mary's	59	61	55	54	51	49	52	48	46	35	41	39	-5%	-34%	50
Somerset	16	17	15	16	16	16	14	13	10	11	6	6	0%	-63%	15
Talbot	7	6	6	5	6	6	4	4	4	4	5	5	0%	-29%	5
Washington	84	94	95	97	98	101	99	100	97	100	101	104	3%	24%	99
Wicomico	17	18	19	18	20	20	20	23	22	20	21	20	-5%	18%	20
Worcester	32	27	28	29	26	28	27	26	26	22	22	24	9%	-25%	27
TOTAL	3,539	3,561	3,552	3,536	3,492	3,416	3,405	3,452	3,445	3,424	3,367	3,378	0%	-5%	3,449

Source: MD CHESSIE/ University of Maryland School of Social Work OOH Served report

*NOTE: Baltimore City continues to report raw data in lieu of MD CHESSIE data

Maryland Child Welfare Services Data

February-19

[OOH Placement-End of month: Children in Family Homes](#)

Formal Kinship Care

	Mar-18	Apr-18	May-18	Jun-18	Jul-18	Aug-18	Sep-18	Oct-18	Nov-18	Dec-18	Jan-19	Feb-19	1 month Change	12-month Change	12-month Median
Allegany	26	30	25	24	27	26	24	17	20	21	26	31	19%	19%	26
Anne Arundel	14	15	15	18	14	12	12	14	15	16	19	18	-5%	29%	15
Baltimore City*	499	500	466	478	461	440	431	437	456	455	422	419	-1%	-16%	456
Baltimore County	28	25	25	30	23	24	22	23	16	14	17	20	18%	-29%	23
Calvert	8	6	8	10	11	12	11	12	12	12	10	10	0%	25%	11
Caroline	6	6	5	4	3	2	0	0	4	4	5	5	0%	-17%	4
Carroll	7	6	0	1	1	1	1	1	1	2	6	7	17%	0%	1
Cecil	4	4	4	4	7	5	4	4	4	4	5	5	0%	25%	4
Charles	9	8	3	6	6	8	8	6	9	8	9	11	22%	22%	8
Dorchester	2	2	2	2	2	2	2	2	2	3	3	3	0%	50%	2
Frederick	3	3	3	3	4	3	2	3	3	3	2	2	0%	-33%	3
Garrett	10	12	9	8	8	8	7	5	8	11	11	11	0%	10%	9
Harford	19	26	27	30	26	26	28	32	34	34	24	21	-13%	11%	27
Howard	1	1	1	1	2	4	6	6	6	6	5	6	20%	500%	5
Kent	1	1	1	1	1	1	1	1	1	0	0	0	NA	-100%	1
Montgomery	80	76	68	78	82	87	89	88	78	86	84	93	11%	16%	83
Prince George's	59	59	58	54	61	58	52	55	56	63	68	66	-3%	12%	59
Queen Anne's	0	0	0	0	0	0	0	0	0	0	0	0	NA	NA	0
St. Mary's	16	17	15	14	14	9	7	7	5	5	10	10	0%	-38%	10
Somerset	0	0	3	3	3	4	1	1	1	1	1	1	0%	NA	1
Talbot	0	0	0	0	0	0	0	0	0	0	0	0	NA	NA	0
Washington	8	7	11	7	10	12	12	12	12	12	13	15	15%	88%	12
Wicomico	3	3	2	2	2	2	1	2	1	1	1	1	0%	-67%	2
Worcester	0	0	0	1	0	0	0	0	0	0	0	0	NA	NA	0
TOTAL	803	807	751	779	768	746	721	728	744	761	741	755	2%	-6%	753

Source: MD CHESSIE/ University of Maryland School of Social Work OOH Served report

*NOTE: Baltimore City continues to report raw data in lieu of MD CHESSIE data

Maryland Child Welfare Services Data

February-19

[OOH Placement: End of Month: Children in Family Homes](#)

Restricted (Relative) Foster Care

	Mar-18	Apr-18	May-18	Jun-18	Jul-18	Aug-18	Sep-18	Oct-18	Nov-18	Dec-18	Jan-19	Feb-19	1 month Change	12-month Change	12-month Median
Allegany	3	3	1	0	0	0	0	0	0	0	0	0	NA	-100%	0
Anne Arundel	0	0	0	0	0	0	0	0	0	0	0	0	NA	NA	0
Baltimore City*	172	158	177	178	148	149	152	156	144	144	149	145	-3%	-16%	151
Baltimore County	31	31	29	23	29	25	27	27	28	30	29	30	3%	-3%	29
Calvert	4	5	5	5	5	5	5	5	5	3	3	3	0%	-25%	5
Caroline	0	0	0	0	0	0	0	0	0	0	0	0	NA	NA	0
Carroll	7	6	6	3	6	6	6	0	2	2	0	0	NA	-100%	5
Cecil	0	0	0	0	1	5	7	7	8	8	8	7	-13%	NA	6
Charles	0	0	0	0	0	0	0	0	0	0	0	0	NA	NA	0
Dorchester	0	0	0	0	0	0	0	0	0	0	0	0	NA	NA	0
Frederick	1	1	1	1	1	1	1	1	0	0	3	3	0%	200%	1
Garrett	6	6	8	7	7	7	5	5	3	3	3	3	0%	-50%	6
Harford	2	2	2	2	2	2	3	3	3	3	4	4	0%	100%	3
Howard	5	5	5	5	4	3	3	4	4	4	3	5	67%	0%	4
Kent	0	0	0	0	0	0	0	0	0	0	0	0	NA	NA	0
Montgomery	20	22	24	25	21	19	19	23	24	26	25	20	-20%	0%	23
Prince George's	2	2	2	1	1	2	2	3	2	2	2	2	0%	0%	2
Queen Anne's	1	1	1	1	1	1	1	1	1	1	1	1	0%	0%	1
St. Mary's	9	7	7	7	4	2	2	2	1	1	1	1	0%	-89%	2
Somerset	0	0	2	0	0	2	4	4	4	4	0	0	NA	NA	1
Talbot	0	0	0	0	0	0	0	0	0	0	0	0	NA	NA	0
Washington	6	5	4	7	6	6	6	5	5	5	5	5	0%	-17%	5
Wicomico	0	0	0	0	0	0	0	0	0	0	0	0	NA	NA	0
Worcester	0	0	0	0	0	0	0	0	0	0	0	0	NA	NA	0
TOTAL	269	254	274	265	236	235	243	246	234	236	236	229	-3%	-15%	240

Source (July 2012 - present): MD CHESSIE/ University of Maryland School of Social Work OOH Served report

*NOTE: Baltimore City continues to report raw data in lieu of MD CHESSIE data

Maryland Child Welfare Services Data

February-19

[OOH Placement - End of Month: Children in Family Homes](#)

Regular Foster Care -- Includes Emergency FC, Regular FC, Intermediate FC, and Refugee Child

	Mar-18	Apr-18	May-18	Jun-18	Jul-18	Aug-18	Sep-18	Oct-18	Nov-18	Dec-18	Jan-19	Feb-19	1 month Change	12-month Change	12-month Median
Allegany	35	37	38	34	32	35	32	35	32	32	30	20	-33%	-43%	33
Anne Arundel	47	49	46	45	45	44	40	41	36	38	33	33	0%	-30%	43
Baltimore City*	354	361	368	346	343	339	329	341	344	324	329	321	-2%	-9%	342
Baltimore County	98	97	103	102	101	98	94	102	106	103	102	100	-2%	2%	102
Calvert	19	19	20	18	18	11	11	11	15	14	10	9	-10%	-53%	15
Caroline	11	11	13	13	12	12	8	8	8	8	8	7	-13%	-36%	10
Carroll	20	19	15	14	16	15	15	14	14	14	15	11	-27%	-45%	15
Cecil	71	71	70	66	66	62	57	64	66	64	59	61	3%	-14%	65
Charles	34	34	37	32	32	31	27	27	25	26	25	26	4%	-24%	29
Dorchester	1	3	3	3	2	2	2	3	3	3	3	3	0%	200%	3
Frederick	28	26	24	26	26	25	27	26	26	25	22	21	-5%	-25%	26
Garrett	28	22	17	20	24	21	20	20	17	19	24	19	-21%	-32%	20
Harford	62	57	63	64	58	62	60	57	54	58	69	76	10%	23%	61
Howard	8	8	9	9	11	12	13	12	13	13	14	14	0%	75%	12
Kent	0	0	0	0	0	0	0	0	0	1	2	2	0%	NA	0
Montgomery	96	95	99	86	83	78	85	86	93	94	99	107	8%	11%	94
Prince George's	68	71	74	74	76	76	79	78	76	74	73	69	-5%	1%	74
Queen Anne's	5	5	5	5	5	5	4	4	4	4	4	4	0%	-20%	5
St. Mary's	14	18	17	18	20	20	21	20	21	21	19	18	-5%	29%	20
Somerset	10	10	6	7	7	3	3	1	1	1	1	1	0%	-90%	3
Talbot	1	1	1	0	0	0	0	0	1	1	1	1	0%	0%	1
Washington	42	48	48	53	55	47	50	49	49	45	44	43	-2%	2%	48
Wicomico	11	11	13	14	14	14	15	16	16	15	15	14	-7%	27%	14
Worcester	21	16	16	16	17	18	16	15	15	14	14	16	14%	-24%	16
TOTAL	1,084	1,089	1,105	1,065	1,063	1,030	1,008	1,030	1,035	1,011	1,015	996	-2%	-8%	1,033

Source: MD CHESSIE/ University of Maryland School of Social Work OOH Served report

*NOTE: Baltimore City continues to report raw data in lieu of MD CHESSIE data

Maryland Child Welfare Services Data

February-19

[OOH Placement-End of Month: Children in Family Homes](#)

Treatment Foster Care - Private

	Mar-18	Apr-18	May-18	Jun-18	Jul-18	Aug-18	Sep-18	Oct-18	Nov-18	Dec-18	Jan-19	Feb-19	1-month Change	12-month Change	12-month Median
Allegany	3	3	3	2	3	3	3	3	3	2	2	1	-50%	-67%	3
Anne Arundel	19	21	21	19	17	17	18	18	20	19	19	17	-11%	-11%	19
Baltimore City*	526	532	529	531	520	528	539	553	565	562	543	557	3%	6%	536
Baltimore County	169	172	169	165	172	151	158	156	151	145	144	142	-1%	-16%	157
Calvert	6	6	6	6	4	5	5	5	5	9	9	12	33%	100%	6
Caroline	1	1	1	0	0	0	0	0	0	0	0	0	NA	-100%	0
Carroll	13	12	13	11	13	14	15	23	22	22	22	22	0%	69%	15
Cecil	23	23	24	29	28	25	24	23	23	23	21	20	-5%	-13%	23
Charles	11	13	15	14	14	11	9	9	9	9	8	9	13%	-18%	10
Dorchester	9	7	9	7	8	7	6	5	5	6	6	7	17%	-22%	7
Frederick	10	9	9	10	10	10	10	10	10	10	10	10	0%	0%	10
Garrett	0	0	0	0	0	1	1	1	1	0	3	3	0%	NA	1
Harford	30	30	35	32	31	35	38	35	38	43	45	42	-7%	40%	35
Howard	20	20	20	20	18	17	21	21	18	20	16	18	13%	-10%	20
Kent	2	2	2	2	2	2	2	2	2	2	2	2	0%	0%	2
Montgomery	68	66	70	67	70	67	69	70	71	69	78	76	-3%	12%	70
Prince George's	212	205	212	213	218	202	207	196	200	197	189	198	5%	-7%	204
Queen Anne's	0	0	0	0	0	0	0	1	1	1	1	1	0%	NA	0
St. Mary's	15	14	14	13	11	10	10	10	10	7	9	9	0%	-40%	10
Somerset	6	5	2	3	3	3	3	3	3	4	3	3	0%	-50%	3
Talbot	5	4	4	4	5	5	3	3	2	2	2	2	0%	-60%	4
Washington	23	28	26	26	24	29	25	27	24	29	29	30	3%	30%	27
Wicomico	2	2	2	1	3	3	3	3	3	2	2	1	-50%	-50%	2
Worcester	11	11	12	12	9	10	11	11	11	8	8	8	0%	-27%	11
TOTAL	1,184	1,186	1,198	1,187	1,183	1,155	1,180	1,188	1,197	1,191	1,171	1,190	2%	1%	1,187

Source: MD CHESSIE/ University of Maryland School of Social Work OOH Served report

*NOTE: Baltimore City continues to report raw data in lieu of MD CHESSIE data

Maryland Child Welfare Services Data

February-19

[OOH Placement-End Of Month: Children In Family Homes](#)

Treatment Foster Care--Public

	Mar-18	Apr-18	May-18	Jun-18	Jul-18	Aug-18	Sep-18	Oct-18	Nov-18	Dec-18	Jan-19	Feb-19	1 month Change	12-month Change	12-month Median
Allegany	0	0	0	0	0	0	0	0	0	0	0	0	NA	NA	0
Anne Arundel	0	0	0	0	0	0	0	0	0	0	0	0	NA	NA	0
Baltimore City*	0	0	0	0	0	0	0	0	NA	0	0	NA	NA	NA	0
Baltimore County	10	10	9	9	9	10	12	12	12	10	11	12	9%	20%	10
Calvert	0	0	0	0	0	0	0	0	0	0	0	0	NA	NA	0
Caroline	0	0	0	0	0	0	0	0	0	0	0	0	NA	NA	0
Carroll	0	0	0	0	0	0	0	0	0	0	0	0	NA	NA	0
Cecil	6	7	7	7	5	4	5	5	4	4	4	3	-25%	-50%	5
Charles	0	0	0	0	0	0	0	0	0	0	0	0	NA	NA	0
Dorchester	0	0	0	0	0	0	0	0	0	0	0	0	NA	NA	0
Frederick	0	0	0	0	0	0	0	0	0	0	0	0	NA	NA	0
Garrett	0	0	0	0	0	0	0	0	0	0	0	0	NA	NA	0
Harford	0	0	0	0	0	0	0	0	0	0	0	0	NA	NA	0
Howard	0	0	0	0	0	0	0	0	0	0	0	0	NA	NA	0
Kent	0	0	0	0	0	0	0	0	0	0	0	0	NA	NA	0
Montgomery	7	7	7	6	4	4	4	4	3	3	3	3	0%	-57%	4
Prince George's	0	0	0	0	0	0	0	0	0	0	0	0	NA	NA	0
Queen Anne's	0	0	0	0	0	0	0	0	0	0	0	0	NA	NA	0
St. Mary's	0	0	0	0	0	0	0	0	0	0	0	0	NA	NA	0
Somerset	0	0	0	0	0	1	1	1	1	1	1	1	0%	NA	1
Talbot	0	0	0	0	0	0	0	0	0	0	0	0	NA	NA	0
Washington	0	0	0	0	0	0	0	0	0	0	0	0	NA	NA	0
Wicomico	0	0	0	0	0	0	0	0	0	0	0	0	NA	NA	0
Worcester	0	0	0	0	0	0	0	0	0	0	0	0	NA	NA	0
TOTAL	23	24	23	22	18	19	22	22	20	18	19	19	0%	-17%	21

Source: MD CHESSIE/ University of Maryland School of Social Work OOH Served report

*NOTE: Baltimore City continues to report raw data in lieu of MD CHESSIE data

Maryland Child Welfare Services Data

February-19

[OOH Placement - End of Month: Children in Family Homes](#)

Adoptive / Pre-Finalized Adoptive Homes

	Mar-18	Apr-18	May-18	Jun-18	Jul-18	Aug-18	Sep-18	Oct-18	Nov-18	Dec-18	Jan-19	Feb-19	1 month Change	12-month Change	12-month Median
Allegany	9	9	9	8	4	3	3	2	2	1	2	2	0%	-78%	3
Anne Arundel	0	0	1	4	1	1	1	1	0	1	1	1	0%	NA	1
Baltimore City*	0	0	0	4	3	4	4	3	NA	4	3	NA	NA	NA	3
Baltimore County	0	1	0	0	0	0	0	0	0	0	0	0	NA	NA	0
Calvert	0	0	1	1	1	3	3	4	4	2	2	2	0%	NA	2
Caroline	0	0	0	0	0	1	2	2	2	1	1	1	0%	NA	1
Carroll	0	3	2	2	1	0	0	0	0	0	0	1	NA	NA	0
Cecil	1	1	3	2	2	2	2	0	0	0	1	1	0%	0%	1
Charles	8	6	6	4	2	0	0	0	0	0	0	0	NA	-100%	0
Dorchester	0	0	0	0	0	0	0	0	0	0	0	0	NA	NA	0
Frederick	2	4	7	9	8	8	5	4	4	5	5	5	0%	150%	5
Garrett	0	7	9	7	0	0	0	0	0	0	0	1	NA	NA	0
Harford	0	0	2	0	0	1	1	1	1	1	2	1	-50%	NA	1
Howard	1	1	1	1	0	0	0	0	0	0	0	0	NA	-100%	0
Kent	0	0	0	0	0	0	0	0	0	0	0	0	NA	NA	0
Montgomery	1	1	1	2	1	1	3	3	1	1	3	2	-33%	100%	1
Prince George's	0	0	0	0	0	0	0	0	0	0	3	3	0%	NA	0
Queen Anne's	0	0	0	0	0	0	0	0	0	0	0	0	NA	NA	0
St. Mary's	0	1	1	0	0	1	0	1	6	0	0	0	NA	NA	0
Somerset	0	0	0	0	0	1	0	0	0	0	0	0	NA	NA	0
Talbot	1	1	1	1	1	1	1	1	1	1	1	1	0%	0%	1
Washington	2	2	2	2	1	0	1	2	2	4	5	5	0%	150%	2
Wicomico	0	0	0	0	0	0	0	0	0	0	0	1	NA	NA	0
Worcester	0	0	0	0	0	0	0	0	0	0	0	0	NA	NA	0
TOTAL	25	37	46	47	25	27	26	24	23	21	29	27	-7%	8%	27

Source: MD CHESSIE/ University of Maryland School of Social Work OOH Served report

*NOTE: Baltimore City continues to report raw data in lieu of MD CHESSIE data

Maryland Child Welfare Services Data

February-19

[OOH Placement: End of Month: Children in Group Homes - ALL AGES](#)

	Mar-18	Apr-18	May-18	Jun-18	Jul-18	Aug-18	Sep-18	Oct-18	Nov-18	Dec-18	Jan-19	Feb-19	1 month Change	12-month Change	12-month Median
Allegany	7	7	7	8	8	7	6	5	6	6	5	5	0%	-29%	7
Anne Arundel	23	25	25	25	23	23	18	19	20	23	22	21	-5%	-9%	23
Baltimore City*	88	87	89	96	126	131	129	100	108	107	105	104	-1%	18%	105
Baltimore County	103	108	105	110	102	97	104	100	101	107	107	104	-3%	1%	104
Calvert	7	7	7	6	8	8	8	8	7	7	6	7	17%	0%	7
Caroline	4	4	4	4	4	5	5	5	5	5	5	6	20%	50%	5
Carroll	8	8	9	11	14	12	12	12	12	12	9	9	0%	13%	12
Cecil	11	8	8	8	10	12	14	16	17	19	15	17	13%	55%	13
Charles	8	8	7	11	11	10	10	10	9	10	11	8	-27%	0%	10
Dorchester	7	7	7	6	5	6	6	6	7	7	6	6	0%	-14%	6
Frederick	14	15	17	14	17	15	14	13	13	13	12	12	0%	-14%	14
Garrett	4	4	4	3	3	5	8	9	8	7	5	6	20%	50%	5
Harford	29	30	29	30	25	24	22	27	24	24	26	27	4%	-7%	27
Howard	7	7	7	6	7	6	6	7	7	7	6	7	17%	0%	7
Kent	1	1	1	2	2	1	1	1	1	1	2	2	0%	100%	1
Montgomery	48	47	48	43	42	40	47	47	48	46	49	49	0%	2%	47
Prince George's	64	58	56	52	55	54	55	58	56	58	60	61	2%	-5%	57
Queen Anne's	2	2	2	1	1	1	1	1	1	1	0	0	NA	-100%	1
St. Mary's	9	9	8	9	9	9	7	7	7	6	4	5	25%	-44%	8
Somerset	1	1	2	2	2	2	2	2	2	2	1	1	0%	0%	2
Talbot	2	2	1	1	2	1	2	2	2	3	3	2	-33%	0%	2
Washington	24	25	25	26	29	27	30	28	29	27	24	26	8%	8%	27
Wicomico	9	8	7	8	8	7	5	5	5	6	6	6	0%	-33%	7
Worcester	1	2	3	3	3	2	1	1	2	1	2	2	0%	100%	2
TOTAL	481	480	478	485	516	505	513	489	497	505	491	493	0%	2%	492

Source: MD CHESSIE/ University of MD CHESSIE/ University of Maryland School of Social Work OOH Served report

*NOTE: Baltimore City continues to report raw data in lieu of MD CHESSIE data

Maryland Child Welfare Services Data

February-19

[OOH Placement - End of Month: Children in Residential Treatment Centers](#)

	Mar-18	Apr-18	May-18	Jun-18	Jul-18	Aug-18	Sep-18	Oct-18	Nov-18	Dec-18	Jan-19	Feb-19	1-month Change	12-month Change	12-month Median
Allegany	1	1	2	2	2	2	2	1	1	1	1	1	0%	0%	1
Anne Arundel	5	5	4	4	4	5	6	7	6	5	5	4	-20%	-20%	5
Baltimore City*	15	17	16	17	18	15	14	18	19	21	22	24	9%	60%	18
Baltimore County	30	30	30	28	30	30	30	31	31	31	30	30	0%	0%	30
Calvert	1	1	1	1	1	2	2	2	2	2	2	2	0%	100%	2
Caroline	2	1	1	1	1	2	2	2	2	1	1	1	0%	-50%	1
Carroll	2	2	2	1	1	2	3	4	4	4	4	5	25%	150%	3
Cecil	7	8	8	8	8	7	7	8	6	5	7	6	-14%	-14%	7
Charles	3	4	3	2	2	1	2	2	2	3	2	2	0%	-33%	2
Dorchester	2	2	2	2	2	2	2	2	2	1	1	1	0%	-50%	2
Frederick	4	4	2	1	1	1	2	3	3	3	3	3	0%	-25%	3
Garrett	1	1	1	0	0	0	0	0	0	0	0	0	NA	-100%	0
Harford	10	11	13	12	13	11	10	9	8	9	7	8	14%	-20%	10
Howard	3	3	3	4	3	3	3	3	3	3	3	4	33%	33%	3
Kent	1	1	0	0	0	0	0	0	0	1	0	0	NA	-100%	0
Montgomery	8	9	10	11	10	9	9	8	7	8	6	7	17%	-13%	9
Prince George's	9	9	10	11	10	11	11	10	11	12	11	10	-9%	11%	11
Queen Anne's	1	1	1	1	1	1	1	1	1	1	1	1	0%	0%	1
St. Mary's	0	0	2	1	1	1	3	3	3	3	3	3	0%	NA	3
Somerset	0	0	0	0	0	0	0	0	0	0	0	1	NA	NA	0
Talbot	2	2	3	3	2	2	2	2	2	2	2	2	0%	0%	2
Washington	5	4	4	3	4	5	4	6	7	8	6	6	0%	20%	5
Wicomico	0	0	1	1	0	1	2	2	2	2	1	1	0%	NA	1
Worcester	0	1	1	1	1	1	1	1	1	2	2	1	-50%	NA	1
TOTAL	112	117	120	115	115	114	118	125	123	128	120	123	2%	10%	119

Source: MD CHESSIE/ University of Maryland School of Social Work OOH Served report

*NOTE: Baltimore City continues to report raw data in lieu of MD CHESSIE data

Maryland Child Welfare Services Data

February-19

[OOH Placement-End of Month: Children In Independent Living](#)

	Mar-18	Apr-18	May-18	Jun-18	Jul-18	Aug-18	Sep-18	Oct-18	Nov-18	Dec-18	Jan-19	Feb-19	1 month Change	12-month Change	12-month Median
Allegany	0	0	0	0	0	0	0	0	0	0	0	0	NA	NA	0
Anne Arundel	3	3	3	3	4	3	3	3	2	2	1	1	0%	-67%	3
Baltimore City*	103	100	105	113	84	92	93	109	104	100	105	105	0%	2%	104
Baltimore County	25	24	25	25	22	28	25	28	28	26	26	28	8%	12%	26
Calvert	0	0	0	0	0	0	0	0	0	0	1	1	0%	NA	0
Caroline	0	0	0	0	0	0	0	0	0	0	0	0	NA	NA	0
Carroll	0	0	1	1	1	1	0	0	0	0	1	1	0%	NA	1
Cecil	0	0	0	0	1	2	2	2	1	1	1	1	0%	NA	1
Charles	0	0	0	0	0	1	1	2	2	3	3	3	0%	NA	1
Dorchester	0	0	1	1	1	0	0	0	0	0	0	0	NA	NA	0
Frederick	1	2	2	1	1	3	2	2	2	3	2	2	0%	100%	2
Garrett	0	0	0	0	0	0	0	0	0	0	0	0	NA	NA	0
Harford	3	3	3	2	2	2	2	1	1	1	1	1	0%	-67%	2
Howard	3	3	4	4	4	3	3	3	3	3	2	2	0%	-33%	3
Kent	0	0	0	0	0	0	0	0	0	0	0	0	NA	NA	0
Montgomery	9	10	9	12	13	11	13	12	13	12	11	11	0%	22%	12
Prince George's	8	9	9	7	8	9	9	10	10	12	13	14	8%	75%	9
Queen Anne's	0	0	0	0	0	0	0	0	0	0	0	0	NA	NA	0
St. Mary's	0	0	0	0	0	0	0	0	0	0	0	0	NA	NA	0
Somerset	0	0	0	0	0	0	0	0	0	0	0	0	NA	NA	0
Talbot	0	1	1	1	2	2	2	2	1	0	0	0	NA	NA	1
Washington	1	0	0	0	0	0	0	0	0	0	1	0	-100%	-100%	0
Wicomico	0	0	0	0	0	0	0	0	0	0	0	0	NA	NA	0
Worcester	0	0	0	0	0	0	0	0	0	0	0	0	NA	NA	0
TOTAL	156	155	163	170	143	157	155	174	167	163	168	170	1%	9%	163

Source: MD CHESSIE/ University of Maryland School of Social Work OOH Served report

*NOTE: Baltimore City continues to report raw data in lieu of MD CHESSIE data

**Independent Living count adjusted as of 12/1/17 to include Own Home/Apartment

Maryland Child Welfare Services Data

February-19

[OOH Placement - End of Months: Children in Other Placements \(excluding Trial Home Visit\)](#)

Note: Includes College, Correctional Institution / Secure Detention Facility, Halfway House

	Mar-18	Apr-18	May-18	Jun-18	Jul-18	Aug-18	Sep-18	Oct-18	Nov-18	Dec-18	Jan-19	Feb-19	1 month Change	12-month Change	12-month Median
Allegany	1	1	1	1	1	3	0	1	0	0	0	1	NA	0%	1
Anne Arundel	10	8	11	11	9	14	14	12	15	12	11	15	36%	50%	12
Baltimore City*	176	173	190	170	201	208	211	213	195	157	200	193	-4%	10%	194
Baltimore County	38	46	49	52	51	59	61	57	57	58	64	63	-2%	66%	57
Calvert	7	5	5	7	6	8	8	9	10	10	11	10	-9%	43%	8
Caroline	3	3	2	4	4	3	7	7	3	4	3	2	-33%	-33%	3
Carroll	13	12	14	18	16	15	15	14	11	12	13	10	-23%	-23%	14
Cecil	20	21	19	21	19	20	17	14	17	17	18	19	6%	-5%	19
Charles	14	14	11	10	10	10	11	9	9	12	12	12	0%	-14%	11
Dorchester	7	7	4	6	5	5	5	4	3	2	3	1	-67%	-86%	5
Frederick	11	9	7	11	8	8	8	7	8	6	6	6	0%	-45%	8
Garrett	15	14	14	14	14	12	12	14	14	13	11	17	55%	13%	14
Harford	18	19	19	16	29	24	23	23	26	20	19	21	11%	17%	21
Howard	6	6	7	5	6	9	11	10	8	7	12	8	-33%	33%	8
Kent	1	1	2	2	2	2	1	1	1	0	0	0	NA	-100%	1
Montgomery	49	51	47	53	58	59	54	52	49	49	43	42	-2%	-14%	50
Prince George's	69	73	70	69	69	71	75	80	78	74	78	71	-9%	3%	72
Queen Anne's	0	0	0	1	1	1	2	1	1	1	1	1	0%	NA	1
St. Mary's	3	4	2	2	4	8	3	1	1	6	6	7	17%	133%	4
Somerset	2	1	3	2	2	2	4	4	3	2	3	2	-33%	0%	2
Talbot	3	2	2	3	1	2	3	3	3	3	2	2	0%	-33%	3
Washington	13	13	10	10	12	8	9	10	13	12	12	10	-17%	-23%	11
Wicomico	5	5	4	2	3	3	3	1	1	2	3	5	67%	0%	3
Worcester	3	4	2	2	2	3	3	4	2	4	3	2	-33%	-33%	3
TOTAL	487	492	495	492	533	557	560	551	528	483	534	520	-3%	7%	524

Source: MD CHESSIE/ University of Maryland School of Social Work OOH Served report

*NOTE: Baltimore City continues to report raw data in lieu of MD CHESSIE data

Maryland Child Welfare Services Data

February-19

[OOH Placement - End of Month: Children in Trial Home Visits \(Aftercare\)](#)

	Mar-18	Apr-18	May-18	Jun-18	Jul-18	Aug-18	Sep-18	Oct-18	Nov-18	Dec-18	Jan-19	Feb-19	1 month Change	12-month Change	12-month Median
Allegany	9	6	6	6	0	1	6	6	6	2	1	7	600%	-22%	6
Anne Arundel	6	2	3	4	6	4	6	6	7	7	7	7	0%	17%	6
Baltimore City*	16	27	27	28	48	32	39	47	43	59	52	49	-6%	206%	41
Baltimore County	32	31	30	34	38	46	37	42	38	46	40	39	-3%	22%	38
Calvert	0	2	2	2	3	4	5	5	2	1	0	1	NA	NA	2
Caroline	0	1	1	1	3	1	1	1	1	1	1	1	0%	NA	1
Carroll	0	0	0	0	0	0	0	0	2	0	0	1	NA	NA	0
Cecil	3	3	3	4	6	6	6	5	4	8	4	1	-75%	-67%	4
Charles	2	3	2	2	3	2	4	4	3	0	0	1	NA	-50%	2
Dorchester	0	0	0	0	1	1	1	0	0	0	0	1	NA	NA	0
Frederick	4	3	3	1	2	3	3	5	3	1	0	3	NA	-25%	3
Garrett	6	6	7	10	6	5	5	1	1	1	1	1	0%	-83%	5
Harford	9	13	12	18	16	19	18	21	20	14	14	12	-14%	33%	15
Howard	2	1	1	2	3	3	2	1	1	1	1	2	100%	0%	2
Kent	0	0	0	0	0	0	0	0	0	0	0	0	NA	NA	0
Montgomery	37	35	34	37	35	38	31	31	25	17	11	13	18%	-65%	33
Prince George's	16	19	15	18	21	22	21	24	26	24	16	12	-25%	-25%	20
Queen Anne's	0	0	0	0	0	0	0	0	0	0	0	0	NA	NA	0
St. Mary's	5	4	1	2	2	7	12	8	3	1	2	1	-50%	-80%	3
Somerset	0	2	2	3	3	2	2	3	0	0	0	0	NA	NA	2
Talbot	0	0	0	0	0	0	0	0	0	0	1	1	0%	NA	0
Washington	3	4	4	2	2	7	5	5	5	5	5	6	20%	100%	5
Wicomico	1	2	2	1	1	1	1	2	2	2	3	3	0%	200%	2
Worcester	0	0	0	0	0	0	0	0	0	0	0	0	NA	NA	0
TOTAL	151	164	155	175	199	204	205	217	192	190	159	162	2%	7%	183

Source: MD CHESSIE/ University of Maryland School of Social Work OOH Served report

*NOTE: Baltimore City continues to report raw data in lieu of MD CHESSIE data

Maryland Child Welfare Services Data

February-19

[OOH Placement- Exits: Reunification](#)

	Mar-18	Apr-18	May-18	Jun-18	Jul-18	Aug-18	Sep-18	Oct-18	Nov-18	Dec-18	Jan-19	Feb-19	1-month Change	12-month Change	12-month Median
Allegany	2	5	2	4	3	1	1	1	3	5	4	5	25%	150%	3
Anne Arundel	4	3	4	2	6	2	2	0	2	2	5	1	-80%	-75%	2
Baltimore City*	67	99	75	80	33	40	30	31	29	24	24	11	-54%	-84%	32
Baltimore County	9	2	6	10	5	6	8	4	9	3	3	5	67%	-44%	6
Calvert	0	1	0	1	0	2	0	0	3	1	2	1	-50%	NA	1
Caroline	0	0	0	0	0	1	0	0	0	0	0	0	NA	NA	0
Carroll	2	0	0	1	0	4	0	1	1	0	0	0	NA	-100%	0
Cecil	0	0	1	0	1	0	2	0	1	0	5	2	-60%	NA	1
Charles	0	0	1	1	0	3	0	0	0	1	2	0	-100%	NA	0
Dorchester	1	0	0	1	0	0	0	1	0	0	0	0	NA	-100%	0
Frederick	0	0	1	2	1	1	0	0	2	2	2	0	-100%	NA	1
Garrett	0	0	6	0	4	8	1	4	1	4	1	0	-100%	NA	1
Harford	4	0	0	1	2	1	0	4	1	3	4	1	-75%	-75%	1
Howard	0	1	0	0	0	0	1	2	7	1	6	0	-100%	NA	1
Kent	0	0	0	0	0	0	0	0	0	0	0	0	NA	NA	0
Montgomery	8	2	4	6	7	1	8	2	11	3	8	2	-75%	-75%	5
Prince George's	6	3	1	5	2	10	1	6	7	1	9	11	22%	83%	6
Queen Anne's	0	0	0	0	0	0	0	0	0	0	0	0	NA	NA	0
St. Mary's	0	2	4	0	0	1	0	4	5	3	0	1	NA	NA	1
Somerset	0	0	0	0	0	1	0	0	2	0	0	0	NA	NA	0
Talbot	0	0	0	0	0	0	0	0	0	0	0	0	NA	NA	0
Washington	2	3	4	1	0	0	4	0	0	1	3	0	-100%	-100%	1
Wicomico	1	1	1	1	0	0	0	0	0	0	0	0	NA	-100%	0
Worcester	0	0	0	1	3	0	0	0	0	2	0	0	NA	NA	0
TOTAL	106	122	110	117	67	82	58	60	84	56	78	40	-49%	-62%	80

Source : MD CHESSIE/ University of Maryland School of Social Work OOH Served report

*NOTE: Baltimore City continues to report raw data in lieu of MD CHESSIE data

Maryland Child Welfare Services Data

February-19

[OOH Placement-Exits: Adoption](#)

	Mar-18	Apr-18	May-18	Jun-18	Jul-18	Aug-18	Sep-18	Oct-18	Nov-18	Dec-18	Jan-19	Feb-19	1 month Change	12-month Change	12-month Median
Allegany	3	1	2	5	6	1	0	2	0	1	0	0	NA	-100%	1
Anne Arundel	0	0	0	0	3	1	2	0	1	0	0	1	NA	NA	0
Baltimore City*	3	21	10	7	5	10	5	3	26	7	2	6	200%	100%	7
Baltimore County	3	3	6	10	3	5	2	0	12	3	1	0	-100%	-100%	3
Calvert	0	0	0	0	0	0	0	0	1	2	3	0	-100%	NA	0
Caroline	0	0	0	0	0	0	1	0	0	1	0	0	NA	NA	0
Carroll	0	0	1	0	1	1	0	0	1	0	0	2	NA	NA	0
Cecil	4	0	1	0	0	2	4	2	0	0	6	1	-83%	-75%	1
Charles	0	2	0	3	2	2	1	0	0	0	1	0	-100%	NA	1
Dorchester	0	0	0	0	0	0	0	0	0	0	0	0	NA	NA	0
Frederick	0	0	1	0	1	0	4	1	0	0	1	0	-100%	NA	0
Garrett	0	0	0	2	7	0	0	0	0	0	0	0	NA	NA	0
Harford	1	1	0	3	1	0	1	1	0	1	1	1	0%	0%	1
Howard	1	0	0	0	1	0	0	2	0	0	0	0	NA	-100%	0
Kent	0	0	0	0	0	0	0	0	0	0	0	0	NA	NA	0
Montgomery	2	1	0	1	1	1	2	6	7	1	0	10	NA	400%	1
Prince George's	1	0	0	0	0	0	0	0	3	0	1	2	100%	100%	0
Queen Anne's	0	0	0	0	0	0	0	0	0	0	0	0	NA	NA	0
St. Mary's	0	0	0	1	0	1	1	0	0	7	0	0	NA	NA	0
Somerset	0	0	1	0	0	0	1	2	0	0	1	0	-100%	NA	0
Talbot	1	0	0	0	0	0	0	0	1	0	0	0	NA	-100%	0
Washington	0	0	0	0	1	2	0	0	0	0	0	0	NA	NA	0
Wicomico	0	0	0	0	0	0	0	0	0	0	0	0	NA	NA	0
Worcester	0	5	0	0	0	0	0	0	0	0	0	0	NA	NA	0
TOTAL	19	34	22	32	32	26	24	19	52	23	17	23	35%	21%	24

Revised: 11/2016

Source through June 2012): LDSS raw data

Source tJuly 2012 to present: MD CHESSIE/ University of Maryland School of Social Work OOH Served report

*NOTE: Baltimore City continues to report raw data in lieu of MD CHESSIE data

Maryland Child Welfare Services Data

February-19

[OOH Placement - Exits: Guardianship](#)

	Mar-18	Apr-18	May-18	Jun-18	Jul-18	Aug-18	Sep-18	Oct-18	Nov-18	Dec-18	Jan-19	Feb-19	1 month Change	12-month Change	12-month Median
Allegany	4	1	6	0	0	2	3	4	1	0	0	1	NA	-75%	1
Anne Arundel	3	0	0	0	4	2	1	0	0	2	0	0	NA	-100%	0
Baltimore City*	14	17	15	18	19	19	7	9	0	1	13	1	-92%	-93%	14
Baltimore County	5	0	2	0	3	4	0	5	5	0	2	2	0%	-60%	2
Calvert	1	0	0	1	0	0	0	0	0	0	1	0	-100%	-100%	0
Caroline	0	0	0	0	0	0	0	0	0	0	0	1	NA	NA	0
Carroll	0	2	6	0	1	0	0	5	0	0	2	0	-100%	NA	0
Cecil	2	0	0	0	0	2	0	1	0	0	0	1	NA	-50%	0
Charles	0	2	3	0	0	0	0	0	0	0	0	0	NA	NA	0
Dorchester	0	0	0	0	0	0	0	1	0	0	0	0	NA	NA	0
Frederick	0	0	0	0	2	0	0	0	2	0	0	1	NA	NA	0
Garrett	0	0	0	1	0	1	0	4	2	0	0	0	NA	NA	0
Harford	2	0	1	1	1	1	5	0	0	0	6	1	-83%	-50%	1
Howard	1	0	0	0	0	0	2	0	0	0	1	0	-100%	-100%	0
Kent	0	0	0	0	0	0	0	0	0	0	0	0	NA	NA	0
Montgomery	1	3	9	0	3	2	3	0	1	0	7	1	-86%	0%	2
Prince George's	2	1	1	1	0	2	1	0	0	0	0	1	NA	-50%	1
Queen Anne's	0	0	0	0	0	0	0	0	0	0	1	0	-100%	NA	0
St. Mary's	3	2	2	0	0	0	0	0	2	0	0	0	NA	-100%	0
Somerset	0	0	0	0	0	0	0	0	1	0	4	0	-100%	NA	0
Talbot	0	0	0	0	0	0	0	0	0	0	0	0	NA	NA	0
Washington	0	1	1	1	0	1	0	1	0	0	1	0	-100%	NA	1
Wicomico	0	0	0	0	0	1	2	0	0	0	0	0	NA	NA	0
Worcester	0	0	0	0	0	0	2	0	0	0	0	0	NA	NA	0
TOTAL	38	29	46	23	33	37	26	30	14	3	38	10	-74%	-74%	30

Source: MD CHESSIE/ University of Maryland School of Social Work OOH Served report

*NOTE: Baltimore City continues to report raw data in lieu of MD CHESSIE data

Maryland Child Welfare Services Data

February-19

[OOH Placement - Exits: Aged Out](#)

	Mar-18	Apr-18	May-18	Jun-18	Jul-18	Aug-18	Sep-18	Oct-18	Nov-18	Dec-18	Jan-19	Feb-19	1 month Change	12-month Change	12-month Median
Allegany	0	0	0	0	0	0	1	0	0	0	0	0	NA	NA	0
Anne Arundel	1	2	0	2	0	0	0	1	1	0	2	2	0%	100%	1
Baltimore City*	13	12	12	13	13	11	15	15	9	10	9	12	33%	-8%	12
Baltimore County	3	2	3	5	4	6	3	4	3	6	4	3	-25%	0%	4
Calvert	0	2	0	0	0	0	0	0	1	1	0	0	NA	NA	0
Caroline	1	0	1	0	0	1	0	0	0	0	1	0	-100%	-100%	0
Carroll	0	1	0	0	1	0	1	0	0	0	0	2	NA	NA	0
Cecil	0	2	0	0	0	0	2	1	1	0	0	1	NA	NA	0
Charles	0	0	0	0	0	2	1	1	0	0	0	0	NA	NA	0
Dorchester	1	0	0	0	1	1	1	0	0	0	0	0	NA	-100%	0
Frederick	1	2	1	0	1	0	2	2	0	2	1	1	0%	0%	1
Garrett	1	1	0	0	1	0	0	0	1	0	0	0	NA	-100%	0
Harford	1	0	1	1	3	0	0	1	3	0	2	0	-100%	-100%	1
Howard	1	0	0	0	0	1	0	0	1	0	3	2	-33%	100%	0
Kent	0	0	0	0	0	0	0	0	0	0	0	0	NA	NA	0
Montgomery	2	2	1	1	3	2	3	3	1	2	6	5	-17%	150%	2
Prince George's	2	5	5	7	3	4	5	4	9	5	3	2	-33%	0%	5
Queen Anne's	0	0	0	0	0	0	0	0	0	0	0	0	NA	NA	0
St. Mary's	0	0	1	0	0	0	1	0	0	0	0	0	NA	NA	0
Somerset	0	0	0	0	0	0	0	0	1	0	0	0	NA	NA	0
Talbot	0	1	0	0	0	0	0	0	0	0	0	1	NA	NA	0
Washington	2	1	3	1	0	1	1	0	1	0	0	0	NA	-100%	1
Wicomico	0	1	0	1	0	0	0	0	0	0	0	0	NA	NA	0
Worcester	0	0	0	0	0	0	0	1	0	0	0	0	NA	NA	0
TOTAL	29	34	28	31	30	29	36	33	32	26	31	31	0%	7%	31

Source: MD CHESSIE/ University of MD CHESSIE/ University of Maryland School of Social Work OOH Served report

*NOTE: Baltimore City continues to report raw data in lieu of MD CHESSIE data

Maryland Child Welfare Services Data

February-19

[OOH Placements-Exits: Other](#)

	Mar-18	Apr-18	May-18	Jun-18	Jul-18	Aug-18	Sep-18	Oct-18	Nov-18	Dec-18	Jan-19	Feb-19	1-month Change	12-month Change	12-month Median
Allegany	0	0	0	0	0	0	0	0	0	0	0	0	NA	NA	0
Anne Arundel	0	0	0	0	0	0	0	0	0	0	0	0	NA	NA	0
Baltimore City*	0	0	0	1	2	1	1	2	0	0	0	0	NA	NA	0
Baltimore County	0	0	0	0	1	0	0	0	0	1	0	0	NA	NA	0
Calvert	0	0	0	0	0	0	0	0	0	0	0	0	NA	NA	0
Caroline	0	0	0	0	0	0	0	0	0	0	0	0	NA	NA	0
Carroll	0	1	0	1	0	0	1	0	0	0	0	0	NA	NA	0
Cecil	0	0	0	0	1	1	0	0	0	0	0	1	NA	NA	0
Charles	0	0	0	0	0	0	0	0	0	0	0	0	NA	NA	0
Dorchester	0	0	0	0	0	0	0	0	0	0	0	0	NA	NA	0
Frederick	0	0	0	0	0	0	0	0	0	0	0	0	NA	NA	0
Garrett	0	0	0	0	0	0	0	0	0	0	0	0	NA	NA	0
Harford	0	0	0	0	1	0	1	0	0	0	0	0	NA	NA	0
Howard	0	0	0	0	0	0	0	0	0	0	0	0	NA	NA	0
Kent	0	0	0	0	0	0	0	0	0	0	0	0	NA	NA	0
Montgomery	0	2	1	0	0	2	0	1	0	1	0	0	NA	NA	0
Prince George's	1	0	0	0	0	0	0	0	0	0	0	0	NA	-100%	0
Queen Anne's	0	0	0	0	0	0	0	0	0	0	0	0	NA	NA	0
St. Mary's	0	0	0	0	0	0	0	0	0	0	0	0	NA	NA	0
Somerset	0	0	0	0	0	0	0	0	0	0	0	0	NA	NA	0
Talbot	0	0	0	0	0	0	0	0	0	0	0	0	NA	NA	0
Washington	0	1	0	0	0	1	0	0	0	0	0	0	NA	NA	0
Wicomico	0	0	0	0	0	0	0	0	0	0	0	0	NA	NA	0
Worcester	0	0	0	0	0	0	0	0	0	0	0	0	NA	NA	0
TOTAL	1	4	1	2	5	5	3	3	0	2	0	1	NA	0%	2

Source: MD CHESSIE/ University of Maryland School of Social Work OOH Served report

Maryland Child Welfare Services Data

February-19

Family Foster Homes: New Homes

	Mar-18	Apr-18	May-18	Jun-18	Jul-18	Aug-18	Sep-18	Oct-18	Nov-18	Dec-18	Jan-19	Feb-19	1 month Change	12-month Change	12-month Median
Allegany	3	8	2	9	0	0	2	0	0	0	0	0	NA	-100%	0
Anne Arundel	2	2	2	0	2	0	1	2	2	3	2	3	50%	50%	2
Baltimore City	13	7	25	16	1	9	10	8	0	6	14	14	0%	8%	10
Baltimore County	6	3	5	6	7	6	4	2	5	2	0	9	NA	50%	5
Calvert	1	1	2	0	2	1	1	0	0	0	0	0	NA	-100%	1
Caroline	1	0	2	0	1	0	0	2	1	0	1	0	-100%	-100%	1
Carroll	0	0	1	0	2	0	0	0	1	0	1	0	-100%	NA	0
Cecil	0	1	2	0	1	2	3	1	1	0	2	5	150%	NA	1
Charles	2	1	2	0	1	1	0	2	2	0	3	2	-33%	0%	2
Dorchester	0	0	0	0	0	1	0	0	2	0	0	0	NA	NA	0
Frederick	4	0	1	1	1	4	1	2	1	0	4	1	-75%	-75%	1
Garrett	0	3	1	1	2	2	0	5	2	0	1	0	-100%	NA	1
Harford	2	1	11	3	3	3	2	2	0	3	7	0	-100%	-100%	3
Howard	1	2	1	3	2	0	0	1	0	0	0	1	NA	0%	1
Kent	0	0	0	0	0	0	0	1	1	0	0	0	NA	NA	0
Montgomery	1	5	4	3	4	2	1	6	4	4	6	3	-50%	200%	4
Prince George's	5	2	2	3	1	2	3	7	2	3	4	5	25%	0%	3
Queen Anne's	1	0	0	1	1	0	0	0	1	0	0	1	NA	0%	0
St. Mary's	0	0	4	0	1	0	0	0	0	0	0	0	NA	NA	0
Somerset	0	0	1	0	0	0	3	1	0	0	Pending	0	NA	NA	0
Talbot	0	0	0	0	0	0	0	1	0	1	0	1	NA	NA	0
Washington	2	3	1	2	2	1	5	0	1	0	0	4	NA	100%	2
Wicomico	1	1	0	1	0	0	0	0	0	2	0	0	NA	-100%	0
Worcester	2	0	0	0	1	0	0	1	0	1	0	0	NA	-100%	0
TOTAL	47	40	69	49	35	34	36	44	26	25	45	49	9%	4%	42

Source: LDSS raw data

Maryland Child Welfare Services Data

February-19

Family Foster Homes: Closed Homes

	Mar-18	Apr-18	May-18	Jun-18	Jul-18	Aug-18	Sep-18	Oct-18	Nov-18	Dec-18	Jan-19	Feb-19	1 month Change	12-month Change	12-month Median
Allegany	0	0	0	4	7	0	0	0	2	0	8	2	-75%	NA	0
Anne Arundel	4	0	1	4	1	4	1	7	7	3	12	4	-67%	0%	4
Baltimore City	12	24	11	12	10	7	13	11	6	12	18	8	-56%	-33%	12
Baltimore County	2	8	6	0	17	3	4	2	1	3	0	3	NA	50%	3
Calvert	0	0	0	0	0	0	3	1	0	2	0	0	NA	NA	0
Caroline	1	0	1	0	0	0	0	0	0	0	0	2	NA	100%	0
Carroll	1	0	0	1	2	2	2	1	3	1	0	1	NA	0%	1
Cecil	6	0	5	3	0	4	0	2	1	2	0	3	NA	-50%	2
Charles	1	1	3	2	4	1	1	1	1	0	4	5	25%	400%	1
Dorchester	0	0	0	0	0	0	0	0	1	2	2	0	-100%	NA	0
Frederick	1	1	0	3	3	1	2	0	2	0	1	0	-100%	-100%	1
Garrett	0	0	0	0	1	0	4	4	2	1	0	0	NA	NA	0
Harford	4	1	3	1	4	5	0	3	3	2	4	1	-75%	-75%	3
Howard	6	0	1	1	1	4	1	1	0	0	2	Pending	NA	NA	1
Kent	0	0	0	0	0	0	0	0	0	0	0	0	NA	NA	0
Montgomery	2	2	4	4	2	8	9	3	4	3	5	3	-40%	50%	4
Prince George's	0	4	1	1	1	0	0	2	1	2	1	0	-100%	NA	1
Queen Anne's	1	1	1	0	0	0	1	0	0	1	0	0	NA	-100%	0
St. Mary's	0	1	1	2	0	0	2	1	0	0	0	0	NA	NA	0
Somerset	0	0	0	0	2	0	0	0	0	1	1	0	-100%	NA	0
Talbot	0	0	2	2	0	0	0	0	0	0	0	0	NA	NA	0
Washington	1	3	1	0	5	2	3	0	1	1	0	0	NA	-100%	1
Wicomico	0	0	1	0	1	0	2	1	3	0	1	2	100%	NA	1
Worcester	0	0	0	2	0	1	1	0	0	0	0	0	NA	NA	0
TOTAL	42	46	42	42	61	42	49	40	38	36	59	34	-42%	-19%	42

Source: LDSS raw data

Maryland Child Welfare Services Data

February-19

[Family Foster Homes: End of Month](#)

	Mar-18	Apr-18	May-18	Jun-18	Jul-18	Aug-18	Sep-18	Oct-18	Nov-18	Dec-18	Jan-19	Feb-19	1 month Change	12-month Change	12-month Median
Allegany	47	52	49	54	47	47	49	49	47	47	39	37	-5%	-21%	47
Anne Arundel	107	109	110	106	105	101	101	96	91	91	81	80	-1%	-25%	101
Baltimore City	444	431	445	439	444	446	442	439	453	451	450	442	-2%	0%	444
Baltimore County	146	141	140	146	136	136	136	136	140	139	139	145	4%	-1%	140
Calvert	28	29	31	29	31	30	26	27	28	26	26	26	0%	-7%	28
Caroline	20	20	21	21	22	24	24	26	27	27	28	26	-7%	30%	24
Carroll	22	22	23	22	22	20	18	17	15	14	15	14	-7%	-36%	19
Cecil	71	70	67	64	65	63	66	65	65	63	65	67	3%	-6%	65
Charles	58	58	57	55	48	51	50	51	46	46	45	42	-7%	-28%	51
Dorchester	12	12	13	13	13	11	12	12	46	10	8	8	0%	-33%	12
Frederick	41	40	41	39	37	40	39	41	40	40	43	44	2%	7%	40
Garrett	32	35	36	37	38	40	36	37	37	36	37	37	0%	16%	37
Harford	69	69	77	79	78	76	78	77	74	75	78	77	-1%	12%	77
Howard	30	32	32	34	35	31	30	30	30	30	28	29	4%	-3%	30
Kent	2	2	2	2	2	2	1	2	3	3	3	3	0%	50%	2
Montgomery	201	204	204	203	205	200	192	195	195	196	197	197	0%	-2%	199
Prince George's	94	92	93	95	95	97	100	105	106	107	110	115	5%	22%	99
Queen Anne's	16	15	14	15	16	14	13	13	14	13	13	14	8%	-13%	14
St. Mary's	33	32	35	33	34	34	32	31	31	31	31	31	0%	-6%	32
Somerset	10	10	11	10	8	8	11	12	12	11	11	12	9%	20%	11
Talbot	16	16	14	12	16	16	16	17	17	18	18	17	-6%	6%	16
Washington	77	76	76	78	75	75	77	77	77	76	77	81	5%	5%	77
Wicomico	36	36	35	36	35	35	33	29	26	28	27	25	-7%	-31%	34
Worcester	17	17	17	15	16	15	14	15	15	16	16	16	0%	-6%	16
TOTAL	1,629	1,620	1,643	1,637	1,623	1,612	1,596	1,599	1,635	1,594	1,585	1,585	0%	-3%	1,616

Source: LDSS raw data

Maryland Child Welfare Services Data

February-19

[Family Foster Homes: End of Month - Unrestricted](#)

	Mar-18	Apr-18	May-18	Jun-18	Jul-18	Aug-18	Sep-18	Oct-18	Nov-18	Dec-18	Jan-19	Feb-19	1-month Change	12-month Change	12-month Median
Allegany	42	47	46	52	46	47	48	49	47	45	36	34	-6%	-19%	47
Anne Arundel	104	106	106	102	101	97	98	93	88	89	80	1	-99%	-99%	98
Baltimore City	303	302	318	135	312	316	315	437	307	300	305	290	-5%	-4%	306
Baltimore County	123	120	118	122	116	114	115	114	118	115	116	121	4%	-2%	117
Calvert	25	26	26	24	26	25	21	22	23	21	23	23	0%	-8%	24
Caroline	19	19	20	20	21	23	23	24	24	23	23	21	-9%	11%	22
Carroll	22	22	23	22	21	20	18	17	15	14	15	14	-7%	-36%	19
Cecil	64	63	61	59	61	59	62	62	62	60	62	66	6%	3%	62
Charles	49	49	49	46	39	44	44	45	40	40	34	34	0%	-31%	44
Dorchester	12	12	12	12	12	11	12	12	40	10	0	0	NA	-100%	12
Frederick	38	38	39	37	35	36	35	37	37	37	40	41	2%	8%	37
Garrett	32	31	31	32	34	36	32	35	36	35	36	36	0%	13%	35
Harford	62	62	70	56	56	56	58	59	57	59	63	64	2%	3%	59
Howard	22	24	24	26	28	27	26	25	25	25	24	26	8%	18%	25
Kent	2	2	2	2	2	2	1	2	3	3	3	3	0%	50%	2
Montgomery	179	184	183	183	184	181	177	179	177	178	176	177	1%	-1%	179
Prince George's	94	92	93	95	95	97	100	105	106	107	110	115	5%	22%	99
Queen Anne's	16	15	14	15	16	14	13	13	14	13	13	14	8%	-13%	14
St. Mary's	26	26	29	29	30	30	29	29	29	29	29	29	0%	12%	29
Somerset	10	10	10	9	7	7	9	9	9	8	8	9	13%	-10%	9
Talbot	16	16	14	12	16	16	16	17	17	18	18	17	-6%	6%	16
Washington	68	67	67	68	65	62	64	64	65	65	66	70	6%	3%	66
Wicomico	35	35	34	35	34	34	32	28	25	26	25	23	-8%	-34%	33
Worcester	17	17	17	15	15	14	14	15	15	16	16	16	0%	-6%	16
TOTAL	1,380	1,385	1,406	1,208	1,372	1,368	1,362	1,492	1,379	1,336	1,321	1,244	-6%	-10%	1,370

Source: LDSS raw data

Maryland Child Welfare Services Data

February-19

[Formal Kinship Providers: New Homes](#)

	Mar-18	Apr-18	May-18	Jun-18	Jul-18	Aug-18	Sep-18	Oct-18	Nov-18	Dec-18	Jan-19	Feb-19	1 month Change	12-month Change	12-month Median
Allegany	2	2	0	3	0	1	0	0	0	1	0	0	NA	-100%	0
Anne Arundel	1	0	0	0	0	0	0	0	0	0	1	0	-100%	-100%	0
Baltimore City	TBD	TBD	TBD	NA	NA	NA	NA	NA	NA	NA	NA	NA	NA	NA	#NUM!
Baltimore County	0	0	0	0	0	0	1	1	0	0	0	0	NA	NA	0
Calvert	1	1	3	1	2	0	3	0	0	0	2	0	-100%	-100%	1
Caroline	0	0	0	0	0	0	0	0	0	0	0	0	NA	NA	0
Carroll	0	0	0	0	0	0	0	0	0	0	0	0	NA	NA	0
Cecil	1	0	1	0	0	0	0	0	0	Pending	4	4	0%	300%	0
Charles	0	0	0	0	1	0	0	0	0	3	3	0	-100%	NA	0
Dorchester	0	0	0	0	0	0	0	0	0	0	0	0	NA	NA	0
Frederick	0	0	0	0	0	0	0	0	0	0	0	0	NA	NA	0
Garrett	1	1	0	1	0	1	0	2	1	2	1	0	-100%	-100%	1
Harford	1	1	1	5	5	0	4	7	4	1	0	2	NA	100%	2
Howard	0	0	0	0	1	0	0	0	0	0	0	0	NA	NA	0
Kent	0	0	0	0	0	0	0	0	0	0	0	0	NA	NA	0
Montgomery	0	3	3	0	1	1	0	1	2	0	1	0	-100%	NA	1
Prince George's	3	0	5	6	7	2	0	0	0	0	0	0	NA	-100%	0
Queen Anne's	0	0	0	0	0	0	0	0	0	0	0	0	NA	NA	0
St. Mary's	2	0	0	0	0	0	0	0	2	0	0	0	NA	-100%	0
Somerset	0	0	0	0	0	0	0	0	0	0	0	0	NA	NA	0
Talbot	0	0	0	0	0	0	0	0	0	0	0	0	NA	NA	0
Washington	1	0	0	0	2	0	2	0	0	0	2	0	-100%	-100%	0
Wicomico	0	0	0	0	0	0	0	0	0	0	0	0	NA	NA	0
Worcester	0	0	0	0	0	0	0	0	0	0	0	0	NA	NA	0
TOTAL	13	8	13	16	19	5	10	11	9	7	14	6	-57%	-54%	11

Source: LDSS raw data

Maryland Child Welfare Services Data

February-19

[Formal Kinship Providers: Closed Homes](#)

	Mar-18	Apr-18	May-18	Jun-18	Jul-18	Aug-18	Sep-18	Oct-18	Nov-18	Dec-18	Jan-19	Feb-19	1 month Change	12-month Change	12-month Median
Allegany	0	0	11	19	3	0	0	0	0	0	0	0	NA	NA	0
Anne Arundel	0	0	0	0	0	0	0	0	0	0	0	0	NA	NA	0
Baltimore City	TBD	TBD	TBD	NA	NA	NA	NA	NA	NA	NA	NA	NA	NA	NA	#NUM!
Baltimore County	2	4	0	2	9	5	0	0	2	1	0	1	NA	-50%	2
Calvert	1	1	2	0	0	0	1	2	0	0	2	0	-100%	-100%	1
Caroline	0	0	0	0	0	0	0	0	0	0	0	0	NA	NA	0
Carroll	0	0	0	0	0	0	0	0	0	0	0	0	NA	NA	0
Cecil	2	0	0	0	0	0	2	0	0	1	2	3	50%	50%	0
Charles	0	1	2	2	0	1	1	0	0	0	0	1	NA	NA	1
Dorchester	0	0	0	0	0	0	0	0	0	0	0	0	NA	NA	0
Frederick	0	0	0	0	2	1	0	0	0	0	1	0	-100%	NA	0
Garrett	0	1	1	0	0	1	2	0	1	0	0	0	NA	NA	0
Harford	1	1	0	1	1	1	0	0	0	0	6	0	-100%	-100%	1
Howard	1	0	0	0	0	0	0	0	0	0	0	0	NA	-100%	0
Kent	0	0	0	0	0	0	0	0	0	0	0	0	NA	NA	0
Montgomery	2	4	4	1	1	2	1	2	4	1	1	3	200%	50%	2
Prince George's	2	3	1	1	0	9	14	4	2	2	1	3	200%	50%	2
Queen Anne's	0	0	0	0	0	0	0	0	0	0	0	0	NA	NA	0
St. Mary's	3	1	1	0	0	0	0	1	3	0	0	0	NA	-100%	0
Somerset	0	0	0	0	0	0	0	0	0	0	0	0	NA	NA	0
Talbot	0	0	0	0	0	0	0	0	0	0	0	0	NA	NA	0
Washington	0	1	1	2	0	0	0	0	0	0	0	0	NA	NA	0
Wicomico	0	0	0	0	0	0	0	0	0	0	0	0	NA	NA	0
Worcester	0	0	0	0	0	0	0	0	0	0	0	0	NA	NA	0
TOTAL	14	17	23	28	16	20	21	9	12	5	13	11	-15%	-21%	15

Source: LDSS raw data

Maryland Child Welfare Services Data

February-19

[Formal Kinship Providers: End of Month](#)

	Mar-18	Apr-18	May-18	Jun-18	Jul-18	Aug-18	Sep-18	Oct-18	Nov-18	Dec-18	Jan-19	Feb-19	1 month Change	12-month Change	12-month Median
Allegany	32	32	21	16	13	14	13	13	13	14	14	14	0%	-56%	14
Anne Arundel	18	18	18	18	18	18	18	18	18	18	19	19	0%	6%	18
Baltimore City	TBD	TBD	TBD	NA	NA	TBD	NA	NA	NA	358	422	419	-1%	NA	419
Baltimore County	22	18	18	16	7	8	9	10	8	7	7	6	-14%	-73%	9
Calvert	4	4	5	6	8	8	10	8	8	8	8	8	0%	100%	8
Caroline	0	0	0	0	0	0	0	0	0	0	0	0	NA	NA	0
Carroll	0	0	0	0	0	0	0	0	0	0	0	0	NA	NA	0
Cecil	4	4	5	5	5	5	3	6	6	5	7	8	14%	100%	5
Charles	5	4	2	2	3	2	2	2	2	5	8	7	-13%	40%	3
Dorchester	0	0	0	0	0	0	0	0	2	0	0	0	NA	NA	0
Frederick	5	5	5	5	3	2	2	2	2	2	1	1	0%	-80%	2
Garrett	7	7	6	7	7	7	5	7	7	9	10	10	0%	43%	7
Harford	16	16	17	21	25	24	28	35	39	40	34	36	6%	125%	27
Howard	1	1	1	1	2	1	1	1	1	1	1	1	0%	0%	1
Kent	0	0	0	0	0	0	0	0	0	0	0	0	NA	NA	0
Montgomery	29	28	27	26	26	25	24	23	21	20	20	17	-15%	-41%	25
Prince George's	37	34	38	43	50	43	29	25	23	21	20	17	-15%	-54%	32
Queen Anne's	0	0	0	0	0	0	0	0	0	0	0	0	NA	NA	0
St. Mary's	7	6	5	5	5	5	5	6	5	4	4	4	0%	-43%	5
Somerset	0	0	0	0	0	0	0	0	0	0	0	0	NA	NA	0
Talbot	0	0	0	0	0	0	0	0	0	0	0	0	NA	NA	0
Washington	7	6	5	3	5	5	7	7	7	7	9	9	0%	29%	7
Wicomico	0	0	0	0	0	0	0	0	0	0	0	0	NA	NA	0
Worcester	0	0	0	0	0	0	0	0	0	0	0	0	NA	NA	0
TOTAL	194	183	173	174	177	167	156	163	162	519	584	576	-1%	197%	176

Source: LDSS raw data

Maryland Child Welfare Services Data

February-19

[Plan of Adoption - End of Month](#)

	Mar-18	Apr-18	May-18	Jun-18	Jul-18	Aug-18	Sep-18	Oct-18	Nov-18	Dec-18	Jan-19	Feb-19	1-month Change	12-month Change	12-month Median
Allegany	12	11	10	9	4	5	4	3	3	2	3	3	0%	-75%	4
Anne Arundel	6	6	9	12	9	12	10	10	9	6	5	4	-20%	-33%	9
Baltimore City*	155	155	140	135	133	140	128	123	26	104	102	98	-4%	-37%	131
Baltimore County	36	34	37	34	32	40	30	33	24	26	27	30	11%	-17%	33
Calvert	8	8	8	7	8	4	8	8	10	9	9	9	0%	13%	8
Caroline	3	3	3	3	3	2	2	2	2	1	4	4	0%	33%	3
Carroll	8	8	10	10	10	5	13	13	12	12	12	10	-17%	25%	10
Cecil	23	22	21	21	22	10	21	21	25	25	22	27	23%	17%	22
Charles	14	13	13	10	8	7	7	7	6	6	7	6	-14%	-57%	7
Dorchester	2	2	2	2	2	1	2	5	5	5	5	5	0%	150%	2
Frederick	16	16	17	17	16	6	11	11	11	13	13	13	0%	-19%	13
Garrett	5	7	9	7	0	4	1	10	0	0	1	3	200%	-40%	4
Harford	9	7	9	7	8	14	8	0	10	14	16	20	25%	122%	9
Howard	4	4	4	4	4	5	4	2	2	2	2	2	0%	-50%	4
Kent	0	0	0	0	0	1	0	0	0	0	0	0	NA	NA	0
Montgomery	46	45	47	47	46	42	46	42	35	33	33	29	-12%	-37%	44
Prince George's	21	23	24	27	27	37	27	28	25	24	25	25	0%	19%	25
Queen Anne's	1	1	1	1	1	1	1	1	1	0	0	3	NA	200%	1
St. Mary's	7	7	7	7	7	6	7	8	10	6	6	6	0%	-14%	7
Somerset	5	5	4	5	5	0	5	5	5	5	4	4	0%	-20%	5
Talbot	6	6	6	6	6	2	6	5	4	4	4	2	-50%	-67%	6
Washington	14	16	15	16	15	7	14	13	13	16	16	16	0%	14%	15
Wicomico	4	5	5	5	5	3	4	4	6	6	6	6	0%	50%	5
Worcester	5	3	4	4	4	5	4	3	3	3	9	10	11%	100%	4
TOTAL	410	407	405	396	375	359	363	357	247	322	331	335	1%	-18%	361

Source: MD CHESSIE/ University of Maryland School of Social Work OOH Served report

*NOTE: Baltimore City continues to report raw data in lieu of MD CHESSIE data

Maryland Child Welfare Services Data

February-19

[Legally Free - End Of Month](#)

	Mar-18	Apr-18	May-18	Jun-18	Jul-18	Aug-18	Sep-18	Oct-18	Nov-18	Dec-18	Jan-19	Feb-19	1 month Change	12-month Change	12-month Median
Allegany	17	16	15	11	5	12	6	5	5	4	5	6	20%	-65%	6
Anne Arundel	11	11	12	13	12	14	12	12	11	10	10	9	-10%	-18%	12
Baltimore City*	94	89	84	83	89	191	139	82	106	69	69	69	0%	-27%	87
Baltimore County	55	65	69	61	58	46	56	59	47	47	48	48	0%	-13%	56
Calvert	10	10	10	9	10	5	10	13	13	12	9	9	0%	-10%	10
Caroline	3	3	3	3	3	1	2	2	2	1	1	1	0%	-67%	2
Carroll	7	8	7	7	6	5	6	6	4	4	13	11	-15%	57%	7
Cecil	23	24	25	26	29	10	27	27	27	27	26	32	23%	39%	27
Charles	21	17	17	15	13	9	11	11	11	12	11	11	0%	-48%	12
Dorchester	5	5	5	5	5	3	5	5	5	5	5	5	0%	0%	5
Frederick	13	16	16	16	14	9	12	11	12	16	14	14	0%	8%	14
Garrett	5	10	12	10	3	3	4	3	2	3	3	6	100%	20%	4
Harford	22	22	25	24	23	16	24	22	23	21	20	20	0%	-9%	22
Howard	6	6	6	6	5	4	6	4	4	4	3	3	0%	-50%	5
Kent	1	1	1	1	1	0	1	1	1	1	1	1	0%	0%	1
Montgomery	51	50	50	52	54	41	57	52	45	45	49	40	-18%	-22%	50
Prince George's	24	24	23	25	25	36	25	26	25	25	27	25	-7%	4%	25
Queen Anne's	1	1	1	1	1	1	1	1	2	2	2	2	0%	100%	1
St. Mary's	8	8	8	8	9	8	11	11	12	5	5	5	0%	-38%	8
Somerset	4	4	3	4	5	0	7	6	6	6	5	5	0%	25%	5
Talbot	8	7	7	7	7	1	7	7	6	6	6	5	-17%	-38%	7
Washington	16	16	16	16	18	16	16	17	17	17	17	20	18%	25%	17
Wicomico	5	4	4	3	4	6	4	4	4	4	4	5	25%	0%	4
Worcester	8	3	3	3	3	6	3	2	2	2	2	2	0%	-75%	3
TOTAL	418	420	422	409	402	443	452	389	392	348	355	354	0%	-15%	406

Source (May 2013 - present): MD CHESSIE/ University of Maryland School of Social Work OOH Served report

Source (August 2011 - August 2012): LDSS raw data

*NOTE: Baltimore City continues to report raw data in lieu of MD CHESSIE data

Maryland Child Welfare Services Data

February-19

[Legally Free AND Plan of Adoption - End Of Month](#)

	Mar-18	Apr-18	May-18	Jun-18	Jul-18	Aug-18	Sep-18	Oct-18	Nov-18	Dec-18	Jan-19	Feb-19	1 month Change	12-month Change	12-month Median
Allegany	12	11	9	8	3	5	2	2	2	1	2	2	0%	-83%	3
Anne Arundel	2	3	4	6	4	7	4	4	3	2	1	0	-100%	-100%	4
Baltimore City*	80	72	67	64	60	75	59	64	73	54	56	55	-2%	-31%	64
Baltimore County	10	14	21	15	14	20	12	17	7	7	9	10	11%	0%	13
Calvert	5	5	5	4	4	2	4	5	4	5	5	5	0%	0%	5
Caroline	3	3	3	3	3	1	2	2	2	1	1	1	0%	-67%	2
Carroll	4	5	4	4	3	3	3	3	2	2	11	9	-18%	125%	4
Cecil	15	15	14	14	17	5	16	14	15	15	14	16	14%	7%	15
Charles	13	11	11	8	6	4	5	6	6	6	5	4	-20%	-69%	6
Dorchester	2	2	2	2	2	1	2	2	2	2	2	2	0%	0%	2
Frederick	7	11	11	11	10	3	6	5	6	10	8	8	0%	14%	8
Garrett	1	7	9	7	0	0	1	0	0	0	1	3	200%	200%	1
Harford	5	5	7	5	5	6	5	5	5	5	6	6	0%	20%	5
Howard	2	2	2	2	2	2	4	2	2	2	2	2	0%	0%	2
Kent	0	0	0	26	0	0	0	0	0	0	0	0	NA	NA	0
Montgomery	26	25	25	10	25	23	29	28	22	22	27	22	-19%	-15%	25
Prince George's	8	8	8	1	11	18	12	13	11	10	14	12	-14%	50%	11
Queen Anne's	1	1	1	4	1	1	1	1	1	0	0	0	NA	-100%	1
St. Mary's	4	4	4	3	4	4	7	7	8	4	4	4	0%	0%	4
Somerset	4	4	3	6	4	0	4	5	5	5	4	4	0%	0%	4
Talbot	6	6	6	10	6	1	6	5	4	4	4	2	-50%	-67%	6
Washington	10	10	10	3	12	4	8	7	7	7	7	10	43%	0%	8
Wicomico	3	3	3	2	4	3	3	3	3	3	3	4	33%	33%	3
Worcester	4	2	2	0	2	3	2	1	1	1	1	1	0%	-75%	2
TOTAL	227	229	231	218	202	191	197	201	191	168	187	182	-3%	-20%	199

Source: MD CHESSIE/ University of Maryland School of Social Work OOH Served report

Maryland Child Welfare Services Data

February-19

[Abbreviations](#)

MD CHESSIE = Maryland Children's Electronic Social Services Information Exchange
LDSS = Local Department of Social Services
VPA = Volunteer Placement Agreement
OOH = Out of Home

Maryland Child Welfare Services Data

February-19

[OOH - CHILDREN UNDER 18 \(end of month\) -- starting in July 2014, excluding children removed via Child with Disabilities VPA](#)

	Mar-18	Apr-18	May-18	Jun-18	Jul-18	Aug-18	Sep-18	Oct-18	Nov-18	Dec-18	Jan-19	Feb-19	1-month Change	12-month Change	12-month Median
Allegany	95	88	88	77	69	72	69	65	65	61	63	63	0%	-34%	69
Anne Arundel	101	102	106	108	99	95	91	93	91	93	89	88	-1%	-13%	94
Baltimore City	1,538	1,583	1,612	1,593	1,572	1,560	1,571	1,574	1,598	1,562	1,532	1539	0%	0%	1,572
Baltimore County	426	427	439	429	430	420	421	425	420	422	424	422	0%	-1%	425
Calvert	43	43	49	49	49	48	48	50	52	51	45	48	7%	12%	49
Caroline	18	18	24	19	19	19	18	18	18	17	18	17	-6%	-6%	18
Carroll	51	52	50	44	49	46	49	51	51	50	52	50	-4%	-2%	50
Cecil	133	125	127	127	131	128	125	127	130	131	121	118	-2%	-11%	127
Charles	76	74	69	64	62	57	55	52	51	52	51	53	4%	-30%	56
Dorchester	14	12	18	11	10	10	10	9	9	10	10	10	0%	-29%	10
Frederick	55	57	57	55	58	56	54	56	54	52	49	52	6%	-5%	55
Garrett	64	68	66	66	60	57	55	51	49	51	56	59	5%	-8%	58
Harford	136	138	169	160	156	160	158	164	167	164	169	172	2%	26%	162
Howard	41	40	44	39	40	43	51	48	45	46	45	50	11%	22%	45
Kent	5	5	6	6	6	5	4	4	4	4	5	5	0%	0%	5
Montgomery	336	336	340	330	331	323	334	337	323	324	328	343	5%	2%	333
Prince George's	351	351	368	352	373	361	372	371	377	379	375	367	-2%	5%	370
Queen Anne's	6	6	6	6	6	6	6	6	6	6	6	6	0%	0%	6
St. Mary's	69	66	64	62	61	63	62	56	54	47	51	52	2%	-25%	62
Somerset	18	18	19	19	19	19	19	17	14	14	9	9	0%	-50%	18
Talbot	8	7	8	7	7	7	7	7	6	5	5	5	0%	-38%	7
Washington	106	107	122	118	125	124	127	128	129	130	127	129	2%	22%	126
Wicomico	26	25	26	24	26	26	25	26	25	25	26	26	0%	0%	26
Worcester	30	31	30	29	26	28	26	27	26	24	24	24	0%	-20%	27
TOTAL	3,746	3,779	3,907	3,794	3,784	3,733	3,757	3,762	3,764	3,720	3,680	3,707	1%	-1%	3,760

Source: MD CHESSIE/ University of Maryland School of Social Work OOH Served report

Maryland Child Welfare Services Data

February-19

[OOH Placement: End of Month: Children in Family Homes - children under 18; starting July 2014 excluding child w/ disabilities VPA](#)

	Mar-18	Apr-18	May-18	Jun-18	Jul-18	Aug-18	Sep-18	Oct-18	Nov-18	Dec-18	Jan-19	Feb-19	1 month Change	12-month Change	12-month Median
Allegany	89	82	80	71	63	65	65	61	61	56	59	58	-2%	-35%	64
Anne Arundel	76	75	77	80	74	68	66	69	68	69	67	65	-3%	-14%	69
Baltimore City	1,363	1,427	1,434	1,430	1,398	1,371	1,376	1,384	1,392	1,383	1,353	1357	0%	0%	1,384
Baltimore County	319	324	317	314	321	312	309	319	308	304	304	303	0%	-5%	313
Calvert	35	35	39	39	38	37	37	39	40	38	32	35	9%	0%	38
Caroline	17	17	19	16	17	15	10	10	14	13	14	13	-7%	-24%	15
Carroll	41	45	35	30	36	35	36	37	40	39	42	41	-2%	0%	38
Cecil	109	106	108	110	113	107	104	107	108	109	99	96	-3%	-12%	108
Charles	63	61	58	53	51	48	45	42	42	39	38	42	11%	-33%	47
Dorchester	9	9	10	7	8	7	7	6	6	7	7	7	0%	-22%	7
Frederick	44	45	43	46	48	48	46	48	45	43	41	43	5%	-2%	45
Garrett	47	50	49	51	44	41	37	31	29	33	41	37	-10%	-21%	41
Harford	111	109	129	134	119	133	134	136	138	141	145	143	-1%	29%	134
Howard	29	30	30	31	31	34	40	39	37	38	34	41	21%	41%	34
Kent	3	3	3	3	3	3	3	3	3	3	4	4	0%	33%	3
Montgomery	277	279	273	272	270	265	272	276	266	267	271	281	4%	1%	272
Prince George's	280	285	295	287	305	290	300	292	298	299	292	289	-1%	3%	292
Queen Anne's	5	5	5	5	5	5	5	5	5	5	5	5	0%	0%	5
St. Mary's	61	57	55	53	50	48	51	47	45	34	40	39	-3%	-36%	49
Somerset	16	16	15	16	16	16	14	12	10	11	6	6	0%	-63%	15
Talbot	6	5	5	4	5	5	4	4	4	3	3	3	0%	-50%	4
Washington	79	81	92	92	94	98	95	95	91	96	96	99	3%	25%	95
Wicomico	16	15	16	15	17	17	18	19	18	17	17	15	-12%	-6%	17
Worcester	27	28	25	25	22	24	23	23	23	19	19	21	11%	-22%	23
TOTAL	3,122	3,189	3,212	3,184	3,148	3,092	3,097	3,104	3,091	3,066	3,029	3,043	0%	-3%	3,101

Source: MD CHESSIE/ University of Maryland School of Social Work OOH Served report

Maryland Child Welfare Services Data

February-19

[OOH Placement: End of Month: Children in Group Homes - children under 18; starting July 2014, excluding child w/ disabilities VPA](#)

	Mar-18	Apr-18	May-18	Jun-18	Jul-18	Aug-18	Sep-18	Oct-18	Nov-18	Dec-18	Jan-19	Feb-19	1 month Change	12-month Change	12-month Median
Allegany	5	5	5	5	5	5	4	3	4	5	4	4	0%	-20%	5
Anne Arundel	15	16	19	18	17	14	11	12	12	15	15	13	-13%	-13%	15
Baltimore City*	51	58	52	66	64	74	71	69	74	68	74	66	-11%	29%	67
Baltimore County	58	58	64	59	54	51	57	55	60	61	63	58	-8%	0%	58
Calvert	6	5	5	4	6	6	6	6	6	6	5	6	20%	0%	6
Caroline	1	1	3	1	1	2	2	2	2	2	2	3	50%	200%	2
Carroll	3	3	6	5	5	4	5	6	6	5	3	3	0%	0%	5
Cecil	10	8	6	6	8	10	11	12	13	14	10	12	20%	20%	10
Charles	10	5	4	6	5	5	5	6	5	6	7	5	-29%	-50%	5
Dorchester	3	1	5	1	1	1	1	1	2	2	2	2	0%	-33%	2
Frederick	5	5	7	5	6	4	4	5	5	5	5	6	20%	20%	5
Garrett	4	4	4	3	3	4	6	6	6	5	4	5	25%	25%	4
Harford	13	15	19	16	14	11	10	15	13	13	14	17	21%	31%	14
Howard	6	5	7	4	5	4	4	4	4	4	3	4	33%	-33%	4
Kent	0	0	1	1	1	0	0	0	0	0	1	1	0%	NA	0
Montgomery	26	26	33	24	23	21	27	26	27	25	28	27	-4%	4%	26
Prince George's	35	35	35	24	29	26	28	29	29	32	34	35	3%	0%	31
Queen Anne's	0	0	0	0	0	0	0	0	0	0	0	0	NA	NA	0
St. Mary's	3	7	6	7	7	7	6	6	6	5	3	4	33%	33%	6
Somerset	1	1	2	2	2	2	2	2	2	2	1	1	0%	0%	2
Talbot	1	1	0	0	0	0	0	0	0	0	0	0	NA	-100%	0
Washington	19	18	21	20	22	20	24	22	23	23	20	22	10%	16%	22
Wicomico	9	7	6	6	6	6	4	4	4	5	5	5	0%	-44%	6
Worcester	1	1	3	2	2	1	0	0	1	0	1	1	0%	0%	1
TOTAL	285	285	313	285	286	278	288	291	304	303	304	300	-1%	5%	290

Source: MD CHESSIE/ University of Maryland School of Social Work OOH Served report

Maryland Child Welfare Services Data

February-19

[Notes](#)

Child Protectiv Services - Alternative Response

- Allegany - AR initiated July 2013
- Anne Arundel - AR initiated mid-January 2014
- Baltimore City- AR initiated July 2014
- Baltimore County - AR initiated Nov 2013
- Calvert - AR initiated mid-January 2014
- Caroline - AR initiated mid-April 2014
- Carroll - AR initiated Nov 2013
- Cecil - AR initiated Nov 2013
- Charles - AR initiated mid-January 2014
- Dorchester - AR initiated mid-April 2014
- Frederick - AR initiated July 2013
- Garrett - AR initiated July 2013
- Harford - AR initiated Nov 2013
- Howard - AR initiated Nov 2013
- Kent - AR initiated mid-April 2014
- Montgomery - AR initiated July 2013
- Prince George's - AR initiated mid-January 2014
- Queen Anne's - AR initiated mid-April 2014
- St. Mary's - AR initiated mid-January 2014
- Somerset - AR initiated mid-April 2014
- Talbot - AR initiated mid-April 2014
- Washington - AR initiated July 2013
- Wicomico - AR initiated mid-April 2014
- Worcester - AR initiated mid-April 2014

[Exits to Reunification, with Reentry within 12 months](#)

Measure C1 - 4: Re-entries to foster care in less than 12 months: Of all children discharged from foster care (FC) to reunification in the 12-month period prior to the year shown, what percent re-entered FC in less than 12 months from the date of discharge?
national median = 15.0%, 25th Percentile = 9.9% (lower score is preferable in this measure)

<i>FY 07 Reentries</i> <i>Exits to Reunification during July 01, 2005 to June 30, 2006; Reentries within 12 months</i>			
		Reentries within 12 months of Exit	
Jurisdiction	FY 06 Exits	n	%
Maryland	1,998	216	10.8%
Allegany	17	5	29.4%
Anne Arundel	68	1	1.5%
Baltimore City	998	132	13.2%
Baltimore County	233	25	10.7%
Calvert	12	1	8.3%
Caroline	16	6	37.5%
Carroll	23	3	13.0%
Cecil	30	4	13.3%
Charles	20	2	10.0%
Dorchester	9	1	11.1%
Frederick	36	0	0.0%
Garrett	8	1	12.5%
Harford	72	8	11.1%
Howard	33	0	0.0%
Kent	3	3	100.0%
Montgomery	129	7	5.4%
Prince George's	113	5	4.4%
Queen Anne's	9	0	0.0%
St. Mary's	18	0	0.0%
Somerset	13	0	0.0%
Talbot	6	0	n/a
Washington	109	12	11.0%
Wicomico	17	0	0.0%
Worcester	6	0	0.0%
Missing	0	n/a	n/a

<i>FY 08 Reentries</i> <i>Exits to Reunification during July 01, 2006 to June 30, 2007; Reentries within 12 months</i>			
		Reentries within 12 months of Exit	
Jurisdiction	FY 07 Exits	n	%
Maryland	1,555	173	11.1%
Allegany	26	1	3.8%
Anne Arundel	48	2	4.2%
Baltimore City	792	97	12.2%
Baltimore County	134	20	14.9%
Calvert	7	2	28.6%
Caroline	7	0	n/a
Carroll	14	3	21.4%
Cecil	38	5	13.2%
Charles	6	1	16.7%
Dorchester	13	0	0.0%
Frederick	22	3	13.6%
Garrett	10	3	30.0%
Harford	58	2	3.4%
Howard	14	3	21.4%
Kent	1	0	0.0%
Montgomery	148	13	8.8%
Prince George's	59	2	3.4%
Queen Anne's	1	0	0.0%
St. Mary's	24	9	37.5%
Somerset	11	0	0.0%
Talbot	5	0	0.0%
Washington	101	7	6.9%
Wicomico	15	0	0.0%
Worcester	1	0	0.0%
Missing	0	n/a	n/a

Reunification consists of exits to reunification, other relative, or court ordered return

Note: Revised 2017-08-24 (Exits to Reunification revised to reflect when children reentered in care within 12 months)

Exits to Reunification, with Reentry within 12 months

Measure C1 - 4: Re-entries to foster care in less than 12 months: Of all children discharged from foster care (FC) to reunification in the 12-month period prior to the year shown, what percent re-entered FC in less than 12 months from the date of discharge?

national median = 15.0%, 25th Percentile = 9.9% (lower score is preferable in this measure)

<i>FY 09 Reentries</i> <i>Exits to Reunification during July 01, 2007 to June 30, 2008; Reentries within 12 months</i>			
		Reentries within 12 months of Exit	
Jurisdiction	FY 08 Exits	n	%
Maryland	1,569	188	12.0%
Allegany	26	3	11.5%
Anne Arundel	45	7	15.6%
Baltimore City	806	116	14.4%
Baltimore County	106	5	4.7%
Calvert	7	1	14.3%
Caroline	18	1	5.6%
Carroll	22	1	4.5%
Cecil	39	1	2.6%
Charles	12	2	16.7%
Dorchester	10	1	10.0%
Frederick	63	2	3.2%
Garrett	15	5	33.3%
Harford	60	0	0.0%
Howard	8	0	0.0%
Kent	2	2	100.0%
Montgomery	108	15	13.9%
Prince George's	63	8	12.7%
Queen Anne's	3	0	0.0%
St. Mary's	7	0	0.0%
Somerset	6	2	33.3%
Talbot	5	3	60.0%
Washington	97	12	12.4%
Wicomico	37	1	2.7%
Worcester	4	0	0.0%
Missing	0	n/a	n/a

<i>FY 10 Reentries</i> <i>Exits to Reunification during July 01, 2008 to June 30, 2009; Reentries within 12 months</i>			
		Reentries within 12 months of Exit	
Jurisdiction	FY 09 Exits	n	%
Maryland	1,407	146	10.4%
Allegany	43	14	32.6%
Anne Arundel	54	0	0.0%
Baltimore City	679	64	9.4%
Baltimore County	138	20	14.5%
Calvert	7	1	14.3%
Caroline	4	0	0.0%
Carroll	24	2	8.3%
Cecil	40	2	5.0%
Charles	12	0	0.0%
Dorchester	3	0	0.0%
Frederick	23	3	13.0%
Garrett	24	7	29.2%
Harford	67	5	7.5%
Howard	12	0	0.0%
Kent	1	0	0.0%
Montgomery	82	13	15.9%
Prince George's	76	4	5.3%
Queen Anne's	3	0	0.0%
St. Mary's	12	2	16.7%
Somerset	15	0	0.0%
Talbot	0	n/a	n/a
Washington	67	9	13.4%
Wicomico	14	0	0.0%
Worcester	7	0	0.0%
Missing	0	n/a	n/a

Reunification consists of exits to reunification, other relative, or court ordered return

Note: Revised 2017-08-24 (Exits to Reunification revised to reflect when children reentered in care within 12 months)

Exits to Reunification, with Reentry within 12 months

Measure C1 - 4: Re-entries to foster care in less than 12 months: Of all children discharged from foster care (FC) to reunification in the 12-month period prior to the year shown, what percent re-entered FC in less than 12 months from the date of discharge?
national median = 15.0%, 25th Percentile = 9.9% (lower score is preferable in this measure)

<i>FY 11 Reentries</i> <i>Exits to Reunification during July 01, 2009 to June 30, 2010; Reentries within 12 months</i>			
		Reentries within 12 months of Exit	
Jurisdiction	FY 10 Exits	n	%
Maryland	1,616	187	11.6%
Allegany	48	12	25.0%
Anne Arundel	34	5	14.7%
Baltimore City	891	104	11.7%
Baltimore County	139	11	7.9%
Calvert	7	2	28.6%
Caroline	10	3	30.0%
Carroll	10	2	20.0%
Cecil	29	1	3.4%
Charles	12	0	0.0%
Dorchester	5	1	20.0%
Frederick	21	3	14.3%
Garrett	25	5	20.0%
Harford	62	5	8.1%
Howard	11	2	18.2%
Kent	4	0	0.0%
Montgomery	99	5	5.1%
Prince George's	101	5	5.0%
Queen Anne's	1	0	0.0%
St. Mary's	15	4	26.7%
Somerset	9	2	22.2%
Talbot	5	0	0.0%
Washington	63	10	15.9%
Wicomico	7	0	0.0%
Worcester	8	5	62.5%
Missing	0	n/a	n/a

<i>FY 12 Reentries</i> <i>Exits to Reunification during July 01, 2010 to June 30, 2011; Reentries within 12 months</i>			
		Reentries within 12 months of Exit	
Jursidiction	FY 11 Exits	n	%
Maryland	1,627	252	15.5%
Allegany	28	4	14.3%
Anne Arundel	40	2	5.0%
Baltimore City	926	142	15.3%
Baltimore County	113	31	27.4%
Calvert	26	4	15.4%
Caroline	3	0	0.0%
Carroll	16	2	12.5%
Cecil	38	2	5.3%
Charles	8	1	12.5%
Dorchester	6	0	0.0%
Frederick	51	4	7.8%
Garrett	17	6	35.3%
Harford	57	6	10.5%
Howard	14	2	14.3%
Kent	3	0	0.0%
Montgomery	92	13	14.1%
Prince Georges	81	6	7.4%
Queen Annes	1	0	0.0%
St. Marys	20	5	25.0%
Somerset	13	2	15.4%
Talbot	15	1	6.7%
Washington	54	19	35.2%
Wicomico	3	0	0.0%
Worcester	2	0	0.0%
Missing	0	n/a	n/a

Reunification consists of exits to reunification, other relative, or court ordered return

Note: Revised 2017-08-24 (Exits to Reunification revised to reflect when children reentered in care within 12 months)

Exits to Reunification, with Reentry within 12 months

Measure C1 - 4: Re-entries to foster care in less than 12 months: Of all children discharged from foster care (FC) to reunification in the 12-month period prior to the year shown, what percent re-entered FC in less than 12 months from the date of discharge?
national median = 15.0%, 25th Percentile = 9.9% (lower score is preferable in this measure)

<i>FY 13 Reentries</i> <i>Exits to Reunification during July 01, 2011 to June 30, 2012; Reentries within 12 months</i>			
		Reentries within 12 months of Exit	
Jurisdiction	FY 12 Exits	n	%
Maryland	1,578	240	16.7%
Allegany	29	7	36.1%
Anne Arundel	28	3	40.0%
Baltimore City	880	127	21.1%
Baltimore County	138	19	6.4%
Calvert	17	0	23.5%
Caroline	8	0	0.0%
Carroll	24	7	11.1%
Cecil	35	7	9.4%
Charles	7	1	11.1%
Dorchester	1	0	0.0%
Frederick	38	7	17.5%
Garrett	12	5	21.7%
Harford	64	9	8.0%
Howard	21	9	16.7%
Kent	2	1	0.0%
Montgomery	77	11	10.5%
Prince George's	80	12	9.5%
Queen Anne's	0	n/a	n/a
St. Mary's	14	2	15.4%
Somerset	11	0	3.2%
Talbot	14	5	0.0%
Washington	64	8	9.0%
Wicomico	4	0	50.0%
Worcester	10	0	0.0%
Missing	0	n/a	n/a

<i>FY 14 Reentries</i> <i>Exits to Reunification during July 01, 2012 to June 30, 2013; Reentries within 12 months</i>			
		Reentries within 12 months of Exit	
Jursidiction	FY 13 Exits	n	%
Maryland	1,359	232	17.1%
Allegany	36	13	36.1%
Anne Arundel	26	9	34.6%
Baltimore City	675	146	21.6%
Baltimore County	118	9	7.6%
Calvert	17	4	23.5%
Caroline	0	n/a	n/a
Carroll	10	2	20.0%
Cecil	33	2	6.1%
Charles	9	1	11.1%
Dorchester	0	n/a	n/a
Frederick	40	7	17.5%
Garrett	22	5	22.7%
Harford	51	4	7.8%
Howard	18	3	16.7%
Kent	0	n/a	n/a
Montgomery	92	9	9.8%
Prince Georges	82	8	9.8%
Queen Annes	2	0	0.0%
St. Marys	31	1	3.2%
Somerset	11	0	0.0%
Talbot	2	0	0.0%
Washington	78	7	9.0%
Wicomico	1	0	0.0%
Worcester	5	2	40.0%
Missing	0	n/a	n/a

Reunification consists of exits to reunification, other relative, or court ordered return

Note: Revised 2017-08-24 (Exits to Reunification revised to reflect when children reentered in care within 12 months)

Exits to Reunification, with Reentry within 12 months

Measure C1 - 4: Re-entries to foster care in less than 12 months: Of all children discharged from foster care (FC) to reunification in the 12-month period prior to the year shown, what percent re-entered FC in less than 12 months from the date of discharge?
national median = 15.0%, 25th Percentile = 9.9% (lower score is preferable in this measure)

<i>FY 15 Reentries</i> <i>Exits to Reunification during July 01, 2013 to June 30, 2014; Reentries within 12 months</i>			
		Reentries within 12 months of Exit	
Jursidiction	FY 14 Exits	n	%
Maryland	1,330	198	14.9%
Allegany	30	1	3.3%
Anne Arundel	28	2	7.1%
Baltimore City	723	127	17.6%
Baltimore County	104	14	13.5%
Calvert	15	0	0.0%
Caroline	7	0	0.0%
Carroll	9	4	44.4%
Cecil	37	4	10.8%
Charles	13	1	7.7%
Dorchester	0	n/a	n/a
Frederick	40	5	12.5%
Garrett	16	1	6.3%
Harford	66	7	10.6%
Howard	10	0	0.0%
Kent	0	n/a	n/a
Montgomery	83	13	15.7%
Prince Georges	62	5	8.1%
Queen Annes	1	0	0.0%
St. Marys	20	5	25.0%
Somerset	3	1	33.3%
Talbot	6	0	0.0%
Washington	53	8	15.1%
Wicomico			0.0%
Worcester	4	0	0.0%
Missing	0	n/a	n/a

<i>FY 16 Reentries</i> <i>Exits to Reunification during July 01, 2014 to June 30, 2015; Reentries within 12 months</i>			
		Reentries within 12 months of Exit	
Jurisdiction	FY 15 Exits	n	%
Maryland	1,120	190	17.0%
Allegany	32	2	6.3%
Anne Arundel	35	1	2.9%
Baltimore City	577	139	24.1%
Baltimore County	88	9	10.2%
Calvert	11	3	27.3%
Caroline	2	1	50.0%
Carroll	14	2	14.3%
Cecil	26	3	11.5%
Charles	8	0	0.0%
Dorchester	4	1	25.0%
Frederick	21	2	9.5%
Garrett	26	4	15.4%
Harford	87	2	2.3%
Howard	15	2	13.3%
Kent	1	0	0.0%
Montgomery	59	8	13.6%
Prince George's	41	3	7.3%
Queen Anne's	0	n/a	n/a
St. Mary's	12	0	0.0%
Somerset	8	0	0.0%
Talbot	4	0	0.0%
Washington	39	6	15.4%
Wicomico	3	1	33.3%
Worcester	7	1	14.3%
Missing	0	n/a	n/a

Reunification consists of exits to reunification, other relative, or court ordered return

Note: Revised 2017-08-24 (Exits to Reunification revised to reflect when children reentered in care within 12 months)

Exits to Reunification, with Reentry within 12 months

Measure C1 - 4: Re-entries to foster care in less than 12 months: Of all children discharged from foster care (FC) to reunification in the 12-month period prior to the year shown, what percent re-entered FC in less than 12 months from the date of discharge?
national median = 15.0%, 25th Percentile = 9.9% (lower score is preferable in this measure)

<i>FY 17 Reentries</i> <i>Exits to Reunification during July 01, 2015 to June 30, 2016</i> <i>Reentries within 12 months</i>			
		Reentries within 12 months of Exit	
Jurisdiction	FY 16 Exits	n	%
Maryland	1,225	212	17.3%
Allegany	47	10	21.3%
Anne Arundel	30	1	3.3%
Baltimore City	644	137	21.3%
Baltimore County	85	14	16.5%
Calvert	11	0	0.0%
Caroline	5	0	0.0%
Carroll	11	2	18.2%
Cecil	27	2	7.4%
Charles	12	0	0.0%
Dorchester	4	0	0.0%
Frederick	20	4	20.0%
Garrett	17	5	29.4%
Harford	56	4	7.1%
Howard	15	4	26.7%
Kent	1	0	0.0%
Montgomery	74	6	8.1%
Prince George's	59	10	16.9%
Queen Anne's	2	0	0.0%
St. Mary's	29	0	0.0%
Somerset	2	0	0.0%
Talbot	3	0	0.0%
Washington	52	7	13.5%
Wicomico	3	0	0.0%
Worcester	16	6	37.5%
Missing	0	n/a	n/a

<i>FY 18 Reentries</i> <i>Exits to Reunification during July 01, 2016 to June 30, 2017</i> <i>Reentries within 12 months</i>			
		Reentries within 12 months of Exit	
Jurisdiction	FY 17 Exits	n	%
Maryland	1,293	202	15.6%
Allegany	52	3	5.8%
Anne Arundel	28	9	32.1%
Baltimore City	701	135	19.3%
Baltimore County	104	14	13.5%
Calvert	13	1	7.7%
Caroline	5	0	0.0%
Carroll	19	5	26.3%
Cecil	8	1	12.5%
Charles	12	3	25.0%
Dorchester	5	1	20.0%
Frederick	23	2	8.7%
Garrett	21	3	14.3%
Harford	58	6	10.3%
Howard	15	2	13.3%
Kent	1	0	0.0%
Montgomery	64	5	7.8%
Prince George's	66	3	4.5%
Queen Anne's	3	0	0.0%
St. Mary's	30	0	0.0%
Somerset	1	0	0.0%
Talbot	2	0	0.0%
Washington	49	8	16.3%
Wicomico	6	1	16.7%
Worcester	7	0	0.0%
Missing	0	n/a	n/a

Reunification consists of exits to reunification, other relative, or court ordered return

Note: Revised 2017-08-24 (Exits to Reunification revised to reflect when children reentered in care within 12 months)