

Temporary Cash Assistance: Applications Received, Approved, Not Approved, & Cases Closed

Applications Received	2015	2015	2015	2015	2015	2015	2016	2016	2016	2016	2016	2016	FY '16 Average
	July	August	September	October	November	December	January	February	March	April	May	June	
Allegany	69	82	75	77	64	62	41	62	67	73	78	79	69
Anne Arundel	454	413	358	413	337	344	257	278	343	343	311	356	351
Baltimore Co.	799	782	750	704	672	674	484	579	747	758	725	808	707
Calvert	35	40	50	60	34	45	34	33	28	46	38	49	41
Caroline	27	41	43	25	30	36	25	21	20	31	31	41	31
Carroll	59	66	72	67	50	69	58	61	49	36	71	75	61
Cecil	135	131	118	111	106	120	91	121	100	102	94	107	111
Charles	158	127	135	119	123	87	71	97	85	116	93	108	110
Dorchester	43	45	32	42	33	41	36	31	32	27	35	45	37
Frederick	151	111	108	113	91	122	104	104	128	114	123	132	117
Garrett	8	13	19	18	19	15	14	12	13	17	7	12	14
Harford	153	143	166	137	126	122	115	131	146	135	123	172	139
Howard	141	137	156	144	99	111	80	122	121	114	111	131	122
Kent	22	20	16	20	14	16	13	15	12	14	16	15	16
Montgomery	529	413	525	417	346	393	286	366	356	370	367	469	403
Prince George's	852	754	792	748	639	667	510	617	637	603	668	779	689
Queen Anne's	25	20	27	18	23	18	20	14	16	33	14	22	21
St. Mary's	100	85	86	109	90	79	58	68	71	98	97	88	86
Somerset	43	45	35	33	25	37	35	27	35	29	24	27	33
Talbot	21	18	27	17	10	16	11	8	12	9	15	10	15
Washington	247	249	244	224	172	196	163	174	223	231	223	248	216
Wicomico	151	112	142	147	128	144	108	109	107	142	104	124	127
Worcester	20	22	20	33	30	17	20	20	22	15	21	24	22
Baltimore City	2,218	2,098	2,053	1,935	1,578	1,667	1,249	1,458	1,894	1,830	1,878	2,051	1,826
State Totals	6,460	5,967	6,049	5,731	4,839	5,098	3,883	4,528	5,264	5,286	5,267	5,972	5,362

Temporary Cash Assistance: Applications Received, Approved, Not Approved, & Cases Closed

Applications Approved	2015 July	2015 August	2015 September	2015 October	2015 November	2015 December	2016 January	2016 February	2016 March	2016 April	2016 May	2016 June	FY '16 Average
Allegany	35	45	38	38	27	43	26	27	40	22	35	33	34
Anne Arundel	120	132	133	133	117	140	98	94	95	110	116	115	117
Baltimore Co.	302	275	292	227	200	239	139	191	209	233	254	232	233
Calvert	10	14	11	8	13	9	8	9	9	9	5	7	9
Caroline	6	12	7	14	7	16	5	9	5	5	11	10	9
Carroll	30	11	13	22	10	20	10	17	14	12	10	16	15
Cecil	41	38	52	45	37	50	38	53	47	34	38	25	42
Charles	29	42	39	40	37	32	23	18	29	22	36	34	32
Dorchester	29	20	11	15	17	15	10	9	8	15	5	20	15
Frederick	41	38	34	36	38	26	32	25	37	36	31	34	34
Garrett	7	8	7	9	17	5	4	9	7	12	1	9	8
Harford	66	42	45	44	49	38	22	43	42	51	37	49	44
Howard	48	47	29	58	41	33	21	26	41	24	30	34	36
Kent	10	9	9	5	5	10	6	6	8	3	8	5	7
Montgomery	141	112	124	124	85	133	87	106	88	102	98	115	110
Prince George's	208	205	202	174	171	199	183	141	133	135	172	189	176
Queen Anne's	7	6	10	4	4	10	4	10	4	10	7	8	7
St. Mary's	61	54	45	56	47	45	27	28	41	47	40	53	45
Somerset	19	17	19	13	17	16	18	17	15	10	7	18	16
Talbot	3	7	5	10	3	4	4	4	5	3	2	7	5
Washington	65	60	84	75	67	73	45	58	52	76	70	59	65
Wicomico	75	62	62	77	75	94	52	47	48	59	67	59	65
Worcester	10	4	7	7	6	9	2	9	7	4	5	5	6
Baltimore City	1,177	1,046	1,068	1,036	830	990	615	711	864	792	862	991	915
State Totals	2,540	2,306	2,346	2,270	1,920	2,249	1,479	1,667	1,848	1,826	1,947	2,127	2,044

Temporary Cash Assistance: Applications Received, Approved, Not Approved, & Cases Closed

Applications Not Approved	2015	2015	2015	2015	2015	2015	2016	2016	2016	2016	2016	2016	FY '16 Average
	July	August	September	October	November	December	January	February	March	April	May	June	
Allegany	46	44	44	43	38	31	25	33	38	43	50	45	40
Anne Arundel	321	298	295	273	294	252	159	193	227	213	272	209	251
Baltimore Co.	636	542	547	565	516	591	307	492	523	518	559	572	531
Calvert	38	27	34	45	40	45	30	42	22	26	48	38	36
Caroline	13	32	36	22	20	21	20	19	17	22	17	33	23
Carroll	59	36	60	66	31	56	29	56	42	36	34	52	46
Cecil	114	78	102	74	78	95	59	77	84	65	74	72	81
Charles	111	121	98	91	100	74	61	79	78	83	83	80	88
Dorchester	34	28	29	26	24	30	17	35	27	17	26	32	27
Frederick	103	94	107	71	77	82	70	90	92	82	76	124	89
Garrett	11	8	11	9	10	13	4	11	4	13	5	4	9
Harford	129	115	120	126	111	90	80	111	94	105	101	123	109
Howard	109	107	113	152	86	89	68	82	105	92	78	124	100
Kent	8	11	14	11	11	5	9	9	9	5	13	9	10
Montgomery	393	404	391	455	306	354	240	295	331	308	321	350	346
Prince George's	600	657	680	656	537	607	397	499	527	498	506	555	560
Queen Anne's	12	19	16	20	13	16	14	12	17	14	15	20	16
St. Mary's	66	56	45	59	47	71	28	46	37	54	61	54	52
Somerset	29	27	35	20	18	17	17	16	25	24	12	17	21
Talbot	13	19	15	16	10	13	6	6	7	8	10	9	11
Washington	193	182	182	182	145	147	112	133	148	172	155	173	160
Wicomico	91	75	91	94	79	117	61	86	66	75	82	75	83
Worcester	20	18	21	18	32	22	11	16	19	16	18	20	19
Baltimore City	1,375	1,195	1,278	1,148	1,071	995	661	926	980	991	1,168	1,179	1,081
State Totals	4,524	4,193	4,364	4,242	3,694	3,833	2,485	3,364	3,519	3,480	3,784	3,969	3,788

Temporary Cash Assistance: Applications Received, Approved, Not Approved, & Cases Closed

Cases Closed	2015 July	2015 August	2015 September	2015 October	2015 November	2015 December	2016 January	2016 February	2016 March	2016 April	2016 May	2016 June	FY '16 Average
Allegany	46	58	54	56	44	30	50	40	38	52	41	60	47
Anne Arundel	161	151	133	143	136	198	154	143	172	159	128	162	153
Baltimore Co.	359	325	385	296	308	338	245	267	264	268	267	284	301
Calvert	11	19	14	4	10	8	11	9	11	15	19	12	12
Caroline	17	19	15	13	5	10	11	16	6	6	13	14	12
Carroll	36	28	26	46	29	20	13	27	10	17	22	19	24
Cecil	55	63	60	59	50	47	48	55	55	56	59	50	55
Charles	40	45	50	55	37	39	32	33	39	47	22	30	39
Dorchester	23	29	21	17	27	26	30	23	23	42	26	35	27
Frederick	39	41	46	54	39	30	41	27	38	55	35	29	40
Garrett	8	5	8	15	5	6	11	8	6	15	19	14	10
Harford	64	67	61	71	77	67	50	66	58	51	55	61	62
Howard	57	52	49	108	43	41	24	51	59	50	37	45	51
Kent	11	6	8	6	13	10	8	12	7	11	10	10	9
Montgomery	151	180	138	162	141	161	170	114	108	137	149	122	144
Prince George's	289	313	314	271	252	289	227	255	188	267	292	322	273
Queen Anne's	11	9	11	6	9	7	3	7	5	9	3	3	7
St. Mary's	77	57	57	80	62	60	57	68	55	49	65	66	63
Somerset	25	17	26	12	16	21	15	21	14	16	10	20	18
Talbot	8	3	7	6	0	5	4	7	6	4	10	2	5
Washington	71	77	76	69	69	73	91	69	75	101	68	64	75
Wicomico	92	77	97	89	83	98	59	96	77	89	68	65	83
Worcester	15	9	8	8	4	6	4	4	10	6	9	11	8
Baltimore City	1,523	1,368	1,468	1,322	1,224	1,375	1,230	1,009	1,431	978	1,173	1,291	1,283
State Totals	3,189	3,018	3,132	2,968	2,683	2,965	2,588	2,427	2,755	2,500	2,600	2,791	2,801

Temporary Cash Assistance: Paid Cases, Paid Recipients (Adults & Children), & Net Expenditures

Paid Cases	2015 July	2015 August	2015 September	2015 October	2015 November	2015 December	2016 January	2016 February	2016 March	2016 April	2016 May	2016 June	FY '16 Average
Allegany	441	429	417	412	400	425	402	389	402	373	377	378	404
Anne Arundel	1,375	1,391	1,429	1,474	1,431	1,410	1,393	1,354	1,309	1,321	1,328	1,316	1,378
Baltimore Co.	2,882	2,899	2,865	2,844	2,727	2,700	2,590	2,553	2,577	2,565	2,623	2,609	2,703
Calvert	128	128	124	129	141	133	138	136	139	136	125	127	132
Caroline	162	161	153	157	158	169	159	158	148	150	156	150	157
Carroll	244	224	213	215	200	199	203	201	203	199	192	192	207
Cecil	510	501	508	510	502	518	515	532	526	503	506	492	510
Charles	365	380	368	363	364	359	363	336	341	322	346	349	355
Dorchester	310	293	295	296	296	278	270	261	250	226	200	197	264
Frederick	381	383	359	375	370	362	371	363	383	363	359	370	370
Garrett	71	73	74	72	87	86	81	84	86	83	76	79	79
Harford	576	550	546	543	533	508	496	488	484	509	487	492	518
Howard	445	435	426	412	421	414	417	394	407	380	387	376	410
Kent	74	79	80	75	72	82	71	75	77	73	80	77	76
Montgomery	1,219	1,164	1,159	1,173	1,097	1,098	1,050	1,037	1,066	1,045	988	1,017	1,093
Prince George's	2,201	2,207	2,158	2,149	2,096	2,083	2,040	1,949	1,955	1,936	1,868	1,831	2,039
Queen Anne's	69	67	70	69	66	72	73	77	71	69	74	75	71
St. Mary's	511	512	516	500	513	512	489	474	479	490	475	486	496
Somerset	201	192	192	191	197	190	199	200	193	190	179	192	193
Talbot	60	66	63	71	73	77	74	73	74	72	67	72	70
Washington	763	756	787	814	794	806	772	763	745	744	757	742	770
Wicomico	648	658	630	641	642	651	634	597	574	569	591	575	618
Worcester	95	87	84	84	86	101	93	103	105	100	96	93	94
Baltimore City	9,720	9,748	9,633	9,754	9,511	9,476	8,982	8,890	8,646	8,803	8,783	8,791	9,228
State Totals	23,451	23,383	23,149	23,323	22,777	22,709	21,875	21,487	21,240	21,221	21,120	21,078	22,234

Temporary Cash Assistance: Paid Cases, Paid Recipients (Adults & Children), & Net Expenditures

Total Paid Recipients	2015 July	2015 August	2015 September	2015 October	2015 November	2015 December	2016 January	2016 February	2016 March	2016 April	2016 May	2016 June	FY '16 Average
Allegany	1,076	1,055	1,036	1,015	979	1,051	999	963	986	874	884	899	985
Anne Arundel	3,192	3,264	3,360	3,447	3,365	3,330	3,255	3,153	3,032	3,088	3,102	3,117	3,225
Baltimore Co.	7,021	7,131	6,952	6,943	6,593	6,500	6,170	6,161	6,127	6,130	6,322	6,300	6,529
Calvert	280	276	265	272	321	296	303	296	306	292	266	263	286
Caroline	335	341	308	339	333	360	340	330	308	315	333	315	330
Carroll	581	528	496	500	464	455	452	437	444	442	420	422	470
Cecil	1,215	1,212	1,209	1,230	1,211	1,262	1,232	1,303	1,240	1,209	1,194	1,181	1,225
Charles	902	951	931	896	874	878	877	808	811	764	857	858	867
Dorchester	775	738	764	764	761	714	666	644	626	554	476	463	662
Frederick	942	928	867	901	898	865	865	861	914	862	848	897	887
Garrett	174	184	184	184	221	217	208	211	212	206	185	200	199
Harford	1,320	1,259	1,271	1,245	1,209	1,155	1,118	1,100	1,106	1,195	1,114	1,124	1,185
Howard	1,191	1,157	1,109	1,090	1,073	1,071	1,061	1,013	1,018	967	1,006	969	1,060
Kent	183	206	206	193	205	219	197	197	208	194	205	193	201
Montgomery	3,279	3,064	3,081	3,181	2,938	2,915	2,814	2,758	2,904	2,796	2,619	2,685	2,920
Prince George's	5,474	5,506	5,416	5,411	5,320	5,254	5,145	4,890	4,859	4,841	4,643	4,598	5,113
Queen Anne's	171	161	170	162	157	166	160	167	149	155	161	168	162
St. Mary's	1,463	1,461	1,499	1,416	1,464	1,475	1,408	1,361	1,381	1,415	1,363	1,393	1,425
Somerset	505	483	501	505	510	501	527	528	497	492	472	506	502
Talbot	126	143	128	154	149	158	157	160	165	155	139	147	148
Washington	1,919	1,902	2,029	2,060	2,006	2,045	1,921	1,903	1,833	1,834	1,856	1,824	1,928
Wicomico	1,713	1,751	1,695	1,715	1,698	1,703	1,660	1,555	1,499	1,456	1,525	1,472	1,620
Worcester	208	184	172	164	170	200	188	210	217	207	192	186	192
Baltimore City	25,332	25,471	25,036	25,341	24,807	24,693	23,307	23,050	22,364	22,773	22,807	22,848	23,986
State Totals*	59,377	59,356	58,685	59,128	57,726	57,483	55,030	54,059	53,206	53,216	52,989	53,028	56,107

*DHR reports local statistics based on preliminary data. State totals for recipients/expenditures are later revised in bold when final data are available.

Temporary Cash Assistance: Paid Cases, Paid Recipients (Adults & Children), & Net Expenditures

Adult Paid Recipients	2015 July	2015 August	2015 September	2015 October	2015 November	2015 December	2016 January	2016 February	2016 March	2016 April	2016 May	2016 June	FY '16 Average
Allegany	338	328	322	309	298	320	287	279	289	250	252	266	295
Anne Arundel	815	838	865	922	866	865	826	801	746	763	771	779	821
Baltimore Co.	1,991	1,985	1,950	1,918	1,801	1,774	1,668	1,638	1,626	1,624	1,702	1,693	1,781
Calvert	58	57	48	51	66	58	64	64	68	65	57	58	60
Caroline	47	56	42	52	46	53	54	42	42	46	47	44	48
Carroll	151	137	123	128	114	110	112	113	115	109	106	101	118
Cecil	335	333	335	333	318	341	323	355	338	319	311	299	328
Charles	226	246	221	209	204	203	208	183	187	168	197	200	204
Dorchester	209	190	199	202	202	180	173	160	155	133	111	105	168
Frederick	230	234	217	227	221	209	215	210	221	208	209	221	219
Garrett	48	50	50	51	68	63	58	62	62	60	53	53	57
Harford	352	324	313	308	306	283	270	263	249	274	255	263	288
Howard	339	329	320	301	299	295	289	274	274	259	275	259	293
Kent	55	60	61	57	55	61	55	57	57	53	54	52	56
Montgomery	892	842	857	870	793	787	754	735	767	759	702	727	790
Prince George's	1,355	1,367	1,351	1,334	1,295	1,271	1,263	1,184	1,210	1,203	1,142	1,124	1,258
Queen Anne's	43	38	37	37	33	38	35	40	37	37	39	42	38
St. Mary's	429	436	441	414	431	438	417	388	401	401	381	387	414
Somerset	161	152	155	147	158	148	154	149	146	145	135	150	150
Talbot	24	30	29	40	32	34	34	36	36	33	29	33	33
Washington	486	469	510	516	491	501	475	470	457	464	472	457	481
Wicomico	462	474	447	448	447	455	438	411	387	372	389	368	425
Worcester	44	39	33	29	30	35	35	40	46	41	36	33	37
Baltimore City	7,464	7,517	7,376	7,474	7,286	7,210	6,770	6,686	6,465	6,610	6,612	6,676	7,012
State Totals	16,554	16,531	16,302	16,377	15,860	15,732	14,977	14,640	14,381	14,396	14,337	14,390	15,373

Temporary Cash Assistance: Paid Cases, Paid Recipients (Adults & Children), & Net Expenditures

Child Paid Recipients	2015 July	2015 August	2015 September	2015 October	2015 November	2015 December	2016 January	2016 February	2016 March	2016 April	2016 May	2016 June	FY '16 Average
Allegany	738	727	714	706	681	731	712	684	697	624	632	633	690
Anne Arundel	2,377	2,426	2,495	2,525	2,499	2,465	2,429	2,352	2,286	2,325	2,331	2,338	2,404
Baltimore Co.	5,030	5,146	5,002	5,025	4,792	4,726	4,502	4,523	4,501	4,506	4,620	4,607	4,748
Calvert	222	219	217	221	255	238	239	232	238	227	209	205	227
Caroline	288	285	266	287	287	307	286	288	266	269	286	271	282
Carroll	430	391	373	372	350	345	340	324	329	333	314	321	352
Cecil	880	879	874	897	893	921	909	948	902	890	883	882	897
Charles	676	705	710	687	670	675	669	625	624	596	660	658	663
Dorchester	566	548	565	562	559	534	493	484	471	421	365	358	494
Frederick	712	694	650	674	677	656	650	651	693	654	639	676	669
Garrett	126	134	134	133	153	154	150	149	150	146	132	147	142
Harford	968	935	958	937	903	872	848	837	857	921	859	861	896
Howard	852	828	789	789	774	776	772	739	744	708	731	710	768
Kent	128	146	145	136	150	158	142	140	151	141	151	141	144
Montgomery	2,387	2,222	2,224	2,311	2,145	2,128	2,060	2,023	2,137	2,037	1,917	1,958	2,129
Prince George's	4,119	4,139	4,065	4,077	4,025	3,983	3,882	3,706	3,649	3,638	3,501	3,474	3,855
Queen Anne's	128	123	133	125	124	128	125	127	112	118	122	126	124
St. Mary's	1,034	1,025	1,058	1,002	1,033	1,037	991	973	980	1,014	982	1,006	1,011
Somerset	344	331	346	358	352	353	373	379	351	347	337	356	352
Talbot	102	113	99	114	117	124	123	124	129	122	110	114	116
Washington	1,433	1,433	1,519	1,544	1,515	1,544	1,446	1,433	1,376	1,370	1,384	1,367	1,447
Wicomico	1,251	1,277	1,248	1,267	1,251	1,248	1,222	1,144	1,112	1,084	1,136	1,104	1,195
Worcester	164	145	139	135	140	165	153	170	171	166	156	153	155
Baltimore City	17,868	17,954	17,660	17,867	17,521	17,483	16,537	16,364	15,899	16,163	16,195	16,172	16,974
State Totals	42,823	42,825	42,383	42,751	41,866	41,751	40,053	39,419	38,825	38,820	38,652	38,638	40,734

Temporary Cash Assistance: Paid Cases, Paid Recipients (Adults & Children), & Net Expenditures

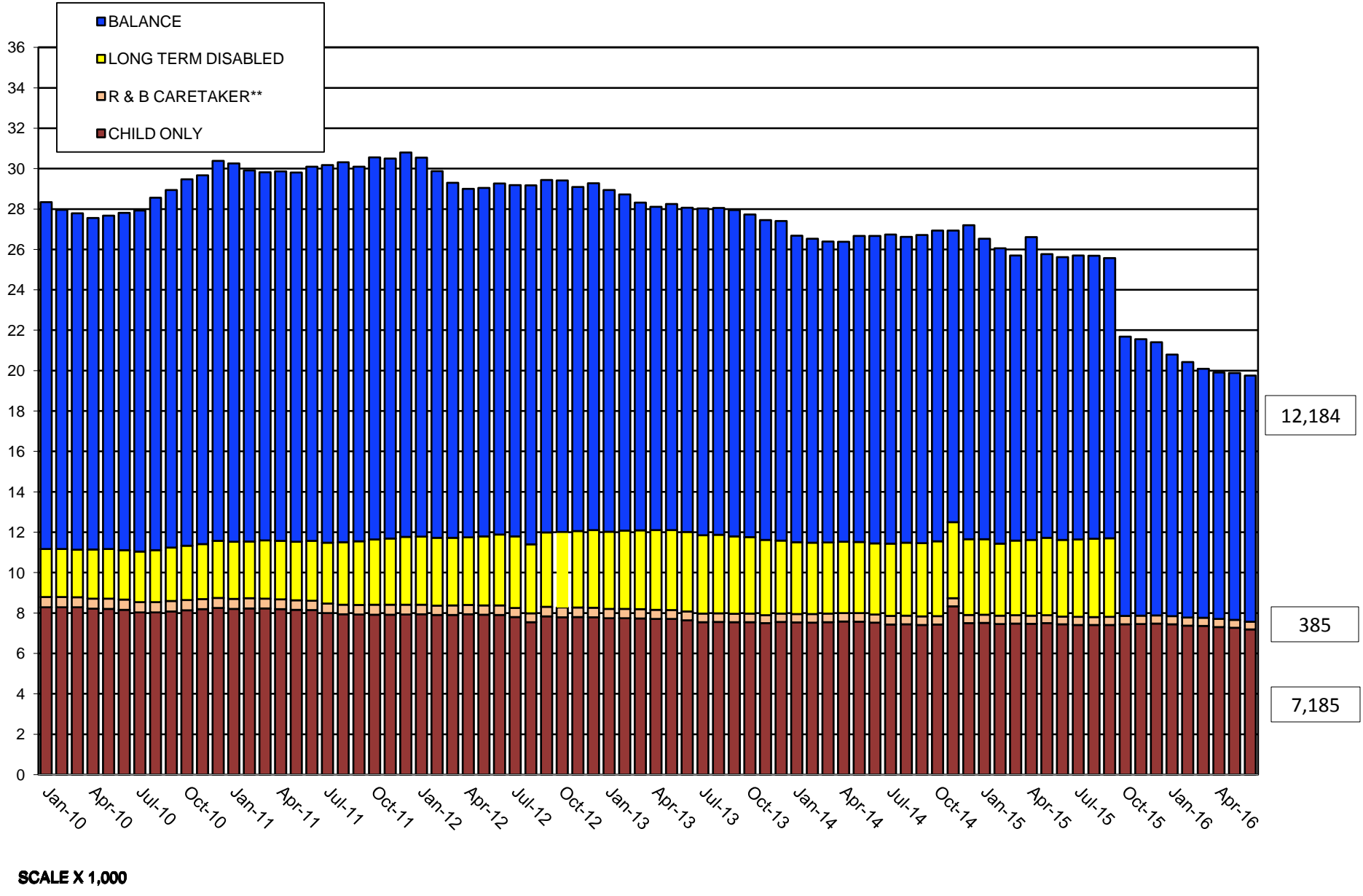
Net Expenditures	2015 July	2015 August	2015 September	2015 October	2015 November	2015 December	2016 January	2016 February	2016 March	2016 April	2016 May	2016 June	FY '16 Average
Allegany	\$211,364	\$206,701	\$202,798	\$194,002	\$193,034	\$203,339	\$194,694	\$192,009	\$194,947	\$180,013	\$177,524	\$178,115	\$194,045
Anne Arundel	\$610,202	\$613,840	\$634,009	\$656,707	\$650,190	\$640,151	\$629,429	\$615,731	\$575,233	\$594,863	\$607,189	\$605,428	\$619,414
Baltimore Co.	\$1,377,339	\$1,386,155	\$1,364,582	\$1,355,823	\$1,296,916	\$1,272,685	\$1,224,700	\$1,212,205	\$1,166,645	\$1,196,246	\$1,233,975	\$1,233,126	\$1,276,700
Calvert	\$54,183	\$52,904	\$51,398	\$53,412	\$58,077	\$58,275	\$61,674	\$59,491	\$62,460	\$59,493	\$53,886	\$53,202	\$56,538
Caroline	\$68,230	\$67,279	\$63,793	\$65,662	\$68,045	\$71,365	\$70,834	\$68,445	\$62,203	\$65,734	\$64,694	\$64,492	\$66,731
Carroll	\$113,200	\$107,242	\$100,211	\$99,004	\$96,016	\$92,847	\$94,255	\$89,622	\$90,173	\$90,428	\$88,479	\$87,106	\$95,715
Cecil	\$241,332	\$241,418	\$240,576	\$243,227	\$242,601	\$250,160	\$247,551	\$252,748	\$245,842	\$238,030	\$243,087	\$240,453	\$243,919
Charles	\$177,059	\$183,329	\$178,815	\$173,236	\$169,485	\$171,973	\$171,252	\$159,178	\$152,517	\$155,787	\$165,732	\$167,448	\$168,818
Dorchester	\$147,858	\$141,320	\$145,132	\$146,442	\$143,206	\$136,817	\$130,046	\$124,989	\$119,974	\$101,961	\$95,179	\$91,305	\$127,019
Frederick	\$176,926	\$178,746	\$169,731	\$169,702	\$173,400	\$170,152	\$172,179	\$172,166	\$179,167	\$168,194	\$159,704	\$169,982	\$171,671
Garrett	\$34,068	\$33,745	\$35,057	\$32,786	\$41,875	\$42,216	\$39,019	\$40,281	\$39,018	\$39,107	\$38,159	\$35,611	\$37,578
Harford	\$260,479	\$249,416	\$246,773	\$237,158	\$239,914	\$234,057	\$223,583	\$215,537	\$211,873	\$230,336	\$224,372	\$224,631	\$233,177
Howard	\$219,702	\$217,962	\$213,780	\$208,853	\$211,951	\$208,386	\$214,096	\$200,257	\$196,014	\$188,704	\$193,815	\$186,376	\$204,991
Kent	\$32,476	\$35,890	\$36,919	\$35,200	\$34,788	\$37,699	\$34,625	\$36,198	\$37,996	\$36,178	\$36,054	\$35,606	\$35,802
Montgomery	\$612,391	\$580,802	\$576,552	\$581,427	\$560,415	\$546,912	\$530,255	\$516,929	\$530,398	\$525,195	\$492,738	\$501,524	\$546,295
Prince George's	\$1,062,086	\$1,072,673	\$1,044,193	\$1,053,867	\$1,035,815	\$1,029,741	\$1,007,987	\$953,930	\$916,206	\$937,428	\$885,999	\$894,253	\$991,181
Queen Anne's	\$33,446	\$31,666	\$30,854	\$31,122	\$30,238	\$32,770	\$34,148	\$34,805	\$31,438	\$30,023	\$33,630	\$35,752	\$32,491
St. Mary's	\$252,233	\$250,755	\$261,209	\$248,000	\$255,595	\$255,287	\$247,997	\$236,529	\$231,037	\$247,063	\$244,345	\$240,656	\$247,559
Somerset	\$95,341	\$88,356	\$85,487	\$91,162	\$95,689	\$93,003	\$93,369	\$92,579	\$93,400	\$92,306	\$91,646	\$94,679	\$92,252
Talbot	\$24,302	\$26,586	\$26,323	\$27,882	\$30,497	\$30,746	\$31,352	\$32,069	\$32,296	\$30,150	\$29,060	\$29,423	\$29,224
Washington	\$364,657	\$360,158	\$373,359	\$382,191	\$376,547	\$381,035	\$365,259	\$363,087	\$346,982	\$347,490	\$357,330	\$351,396	\$364,124
Wicomico	\$314,404	\$312,368	\$309,326	\$310,864	\$315,433	\$319,936	\$315,220	\$297,356	\$280,943	\$275,705	\$282,664	\$276,618	\$300,903
Worcester	\$40,880	\$38,636	\$36,504	\$34,621	\$37,122	\$42,636	\$41,594	\$45,440	\$46,043	\$43,774	\$41,321	\$40,575	\$40,762
Baltimore City	\$4,876,380	\$4,879,233	\$4,812,200	\$4,835,519	\$4,793,505	\$4,755,641	\$4,531,355	\$4,496,206	\$4,291,429	\$4,352,715	\$4,396,910	\$4,390,399	\$4,617,624
State Totals*	\$11,400,537	\$11,357,179	\$11,239,581	\$11,267,869	\$11,150,354	\$11,077,827	\$10,706,476	\$10,507,786	\$10,134,234	\$10,226,921	\$10,237,490	\$10,228,157	\$10,794,534

*DHR reports local statistics based on preliminary data. State totals for recipients/expenditures are later revised in bold when final data are available.

TCA CASES



TCA CORE CASELOAD



SCALE X 1,000

** Room and Board Schedule Cases with Non-Parent Caretakers

Food Supplement Program: Applications Received, Applications Approved, & Applications Not Approved

Applications Received	2015 July	2015 August	2015 September	2015 October	2015 November	2015 December	2016 January	2016 February	2016 March	2016 April	2016 May	2016 June	FY '16 Average
Allegany	351	459	471	413	398	355	398	409	370	419	380	429	404
Anne Arundel	2,067	2,073	1,856	1,963	1,662	1,695	1,784	1,747	1,866	1,707	1,694	1,865	1,832
Baltimore Co.	4,402	4,288	4,212	4,169	3,818	3,976	3,876	3,791	4,026	4,118	4,108	4,343	4,094
Calvert	268	272	288	275	238	241	258	256	252	236	266	292	262
Caroline	178	178	181	171	150	161	177	155	161	128	141	170	163
Carroll	412	439	426	427	359	381	364	435	432	374	386	439	406
Cecil	547	548	555	483	480	503	507	484	537	436	508	514	509
Charles	643	607	628	594	534	503	505	570	545	520	550	596	566
Dorchester	220	245	254	218	201	229	249	182	207	217	187	270	223
Frederick	750	712	826	742	652	730	687	723	714	633	652	740	713
Garrett	85	103	102	111	115	109	123	93	85	97	98	86	101
Harford	928	896	1,014	856	748	767	909	945	919	764	840	962	879
Howard	643	590	676	659	493	588	539	615	602	578	597	699	607
Kent	107	78	92	90	77	83	95	83	68	81	87	93	86
Montgomery	2,491	2,399	2,660	2,507	2,062	2,251	1,774	2,288	2,423	2,224	2,079	2,462	2,302
Prince George's	5,020	5,059	5,294	4,968	4,193	4,306	4,223	4,555	4,796	4,536	4,808	5,170	4,744
Queen Anne's	167	114	160	128	125	131	145	149	135	129	121	112	135
St. Mary's	513	520	462	475	474	468	465	472	480	421	422	465	470
Somerset	159	170	180	174	146	162	194	162	174	169	168	191	171
Talbot	136	114	140	109	111	110	154	135	122	109	97	124	122
Washington	889	876	860	825	720	752	814	791	850	796	783	899	821
Wicomico	793	673	809	828	709	707	770	599	709	651	666	753	722
Worcester	242	186	244	302	292	251	269	212	182	178	171	166	225
Baltimore City	9,445	8,788	8,625	8,520	6,875	8,159	7,799	7,813	8,968	8,479	8,079	9,049	8,383
State Totals	31,456	30,387	31,015	30,007	25,632	27,618	27,078	27,664	29,623	28,000	27,888	30,889	28,938

Food Supplement Program: Applications Received, Applications Approved, & Applications Not Approved

Applications Approved	2015 July	2015 August	2015 September	2015 October	2015 November	2015 December	2016 January	2016 February	2016 March	2016 April	2016 May	2016 June	FY '16 Average
Allegany	323	336	405	385	328	319	322	386	302	356	343	368	348
Anne Arundel	1,668	1,611	1,632	1,583	1,319	1,459	1,386	1,416	1,526	1,322	1,331	1,373	1,469
Baltimore Co.	3,947	3,378	3,336	3,483	3,101	3,299	2,837	3,202	3,449	3,109	3,140	3,412	3,308
Calvert	227	207	255	250	201	203	200	223	205	191	223	226	218
Caroline	144	148	163	135	138	150	116	154	126	126	107	126	136
Carroll	340	343	352	330	292	302	293	358	363	312	307	352	329
Cecil	435	428	445	423	426	447	373	423	455	385	346	411	416
Charles	592	505	509	524	489	451	434	472	546	466	503	529	502
Dorchester	215	233	248	210	193	223	215	188	207	203	161	260	213
Frederick	639	565	629	605	557	600	537	642	591	483	540	591	582
Garrett	83	70	93	102	94	102	100	87	74	87	86	65	87
Harford	748	710	767	705	588	621	692	759	765	621	717	726	702
Howard	486	436	444	542	378	471	394	518	532	518	468	541	477
Kent	84	80	70	85	71	82	76	85	62	55	81	87	77
Montgomery	1,919	1,747	1,984	2,020	1,691	1,847	1,358	1,754	1,916	1,683	1,703	1,871	1,791
Prince George's	3,846	3,875	3,866	4,137	3,400	3,281	2,941	3,423	3,998	3,245	3,572	3,357	3,578
Queen Anne's	140	117	140	109	98	117	123	132	133	113	110	97	119
St. Mary's	456	459	380	430	404	428	404	415	416	369	374	382	410
Somerset	141	138	165	149	134	145	163	140	163	128	134	173	148
Talbot	120	96	117	110	81	97	132	121	115	98	77	104	106
Washington	725	733	696	693	608	663	678	672	720	653	675	759	690
Wicomico	661	571	656	681	622	632	630	499	612	574	552	623	609
Worcester	186	153	143	239	246	231	210	184	159	147	150	134	182
Baltimore City	8,793	7,888	7,531	7,550	6,374	7,202	6,821	7,307	8,010	7,574	7,253	7,920	7,519
State Totals	26,918	24,827	25,026	25,480	21,833	23,372	21,435	23,560	25,445	22,818	22,953	24,487	24,013

Food Supplement Program: Applications Received, Applications Approved, & Applications Not Approved

<i>Applications Not Approved</i>	2015 July	2015 August	2015 September	2015 October	2015 November	2015 December	2016 January	2016 February	2016 March	2016 April	2016 May	2016 June	FY '16 Average
Allegany	87	100	121	103	84	96	82	86	76	89	75	86	90
Anne Arundel	522	559	574	579	537	523	386	520	514	421	543	519	516
Baltimore Co.	1,178	1,195	1,192	1,304	1,102	1,042	974	925	1,124	1,055	1,048	1,208	1,112
Calvert	48	61	67	80	62	55	47	53	79	56	68	67	62
Caroline	53	39	31	52	45	35	35	45	43	39	24	47	41
Carroll	114	109	123	111	99	96	94	101	95	99	89	105	103
Cecil	150	158	147	161	116	125	104	123	99	110	107	153	129
Charles	166	177	154	225	156	133	111	162	163	133	143	145	156
Dorchester	28	31	31	40	25	41	34	30	34	28	24	18	30
Frederick	194	163	190	201	198	156	183	164	180	130	152	149	172
Garrett	20	22	25	23	30	29	29	33	18	21	17	21	24
Harford	247	259	262	295	252	228	225	245	237	234	241	219	245
Howard	236	248	230	245	163	233	183	172	222	159	179	187	205
Kent	17	15	14	14	15	15	12	15	12	12	18	24	15
Montgomery	717	781	789	905	863	825	707	761	828	799	826	774	798
Prince George's	1,212	1,575	1,511	1,545	1,240	1,261	1,370	1,652	1,560	1,377	1,552	1,468	1,444
Queen Anne's	38	37	31	23	25	31	18	25	22	28	21	22	27
St. Mary's	95	99	91	93	87	93	81	103	82	88	81	78	89
Somerset	41	22	42	35	37	24	30	34	25	35	37	36	33
Talbot	24	23	24	25	13	30	26	19	30	21	16	21	23
Washington	220	216	188	211	206	179	171	169	184	174	190	178	191
Wicomico	171	157	154	190	161	143	117	146	140	123	138	147	149
Worcester	59	52	67	79	67	73	58	55	43	43	43	42	57
Baltimore City	1,423	1,649	1,499	1,602	1,576	1,429	1,365	1,413	1,456	1,370	1,386	1,327	1,458
State Totals	7,060	7,747	7,557	8,141	7,159	6,895	6,442	7,051	7,266	6,644	7,018	7,041	7,168

Food Supplement Program: Cases, Participants, & Issuances

FSP Cases	2015 July	2015 August	2015 September	2015 October	2015 November	2015 December	2016 January	2016 February	2016 March	2016 April	2016 May	2016 June	FY '16 Average
Allegany	7,921	7,923	7,953	7,964	7,951	7,908	7,884	7,870	7,804	7,826	7,807	7,750	7,880
Anne Arundel	23,194	23,215	23,205	23,159	23,054	22,908	22,563	22,440	22,175	21,430	21,033	20,719	22,425
Baltimore Co.	54,834	55,138	55,119	55,170	54,917	54,468	53,492	53,166	52,902	51,167	50,465	50,149	53,416
Calvert	4,628	4,572	4,548	4,552	4,513	4,484	4,383	4,353	4,278	4,264	4,256	4,194	4,419
Caroline	3,211	3,210	3,211	3,212	3,211	3,214	3,160	3,178	3,160	3,167	3,154	3,132	3,185
Carroll	6,379	6,369	6,369	6,345	6,305	6,268	6,199	6,177	6,151	5,903	5,853	5,834	6,179
Cecil	7,557	7,515	7,556	7,560	7,553	7,574	7,500	7,464	7,387	7,379	7,310	7,311	7,472
Charles	9,024	9,040	9,072	9,045	9,053	8,965	8,842	8,791	8,770	8,747	8,702	8,656	8,892
Dorchester	4,943	4,915	4,919	4,887	4,868	4,812	4,764	4,762	4,729	4,726	4,657	4,642	4,802
Frederick	9,742	9,753	9,709	9,702	9,653	9,646	9,532	9,560	9,510	9,450	9,432	9,371	9,588
Garrett	2,196	2,189	2,206	2,208	2,225	2,234	2,219	2,231	2,214	2,194	2,206	2,179	2,208
Harford	11,488	11,500	11,444	11,439	11,307	11,175	11,011	10,961	10,866	10,851	10,827	10,782	11,138
Howard	9,207	9,245	9,267	9,293	9,249	9,198	9,117	9,114	9,060	9,084	8,939	8,884	9,138
Kent	1,664	1,667	1,653	1,659	1,655	1,652	1,633	1,642	1,618	1,609	1,615	1,610	1,640
Montgomery	36,759	36,700	36,631	36,698	36,607	36,586	35,869	35,615	35,372	34,510	34,215	33,993	35,796
Prince George's	53,174	53,588	53,695	54,100	53,919	53,437	52,337	51,752	51,390	48,322	47,564	46,551	51,652
Queen Anne's	2,354	2,355	2,366	2,350	2,357	2,375	2,368	2,358	2,329	2,324	2,309	2,302	2,346
St. Mary's	7,212	7,251	7,193	7,208	7,223	7,230	7,179	7,136	7,069	7,058	6,999	6,944	7,142
Somerset	2,972	2,969	2,985	2,990	2,994	2,971	2,955	2,978	2,944	2,931	2,919	2,937	2,962
Talbot	2,421	2,410	2,405	2,403	2,389	2,391	2,396	2,408	2,391	2,409	2,391	2,380	2,400
Washington	12,220	12,244	12,248	12,328	12,314	12,309	12,243	12,218	12,186	12,189	12,243	12,175	12,243
Wicomico	10,176	10,220	10,173	10,189	10,171	10,173	10,125	10,060	9,877	9,900	9,832	9,822	10,060
Worcester	3,574	3,522	3,474	3,508	3,567	3,613	3,636	3,654	3,636	3,611	3,562	3,438	3,566
Baltimore City	117,782	118,735	118,624	118,240	118,076	116,027	114,208	113,339	112,733	112,661	113,324	113,086	115,570
State Totals	404,632	406,245	406,025	406,209	405,131	401,618	395,615	393,227	390,551	383,712	381,614	378,841	396,118

Food Supplement Program: Cases, Participants, & Issuances

FSP Participants	2015 July	2015 August	2015 September	2015 October	2015 November	2015 December	2016 January	2016 February	2016 March	2016 April	2016 May	2016 June	FY '16 Average
Allegany	15,211	15,206	15,136	15,102	15,062	14,990	14,924	14,856	14,829	14,756	14,716	14,657	14,954
Anne Arundel	45,348	45,465	45,338	45,267	45,087	44,655	44,007	43,607	43,154	42,223	41,571	41,119	43,903
Baltimore Co.	108,597	109,262	109,023	109,025	108,227	107,220	105,112	104,456	104,208	101,737	100,971	100,569	105,701
Calvert	8,913	8,820	8,766	8,758	8,634	8,536	8,368	8,277	8,157	8,095	8,068	7,938	8,444
Caroline	6,670	6,698	6,675	6,679	6,649	6,650	6,502	6,530	6,499	6,493	6,467	6,404	6,576
Carroll	12,604	12,566	12,505	12,455	12,365	12,306	12,199	12,144	12,067	11,677	11,584	11,531	12,167
Cecil	15,572	15,416	15,521	15,502	15,445	15,484	15,335	15,292	15,168	15,086	14,912	14,985	15,310
Charles	18,346	18,432	18,424	18,317	18,284	18,110	17,803	17,587	17,522	17,456	17,337	17,241	17,905
Dorchester	9,330	9,251	9,262	9,184	9,118	8,977	8,905	8,892	8,834	8,800	8,690	8,606	8,987
Frederick	20,250	20,342	20,269	20,227	20,139	20,107	19,884	19,803	19,704	19,524	19,520	19,426	19,933
Garrett	4,449	4,430	4,468	4,490	4,499	4,484	4,466	4,492	4,448	4,402	4,370	4,320	4,443
Harford	23,318	23,433	23,264	23,111	22,800	22,389	22,035	21,808	21,612	21,533	21,453	21,387	22,345
Howard	19,292	19,346	19,318	19,494	19,316	19,196	19,022	19,001	18,932	18,979	18,849	18,574	19,110
Kent	3,109	3,121	3,101	3,115	3,113	3,112	3,033	3,053	3,018	3,001	3,028	2,995	3,067
Montgomery	73,621	73,463	73,308	73,357	73,044	72,897	71,308	70,664	70,140	68,783	68,107	67,701	71,366
Prince George's	106,801	107,491	107,799	108,374	108,049	106,858	104,351	103,070	102,356	98,155	96,952	95,088	103,779
Queen Anne's	4,530	4,552	4,569	4,542	4,543	4,553	4,575	4,532	4,478	4,471	4,438	4,431	4,518
St. Mary's	14,358	14,419	14,257	14,326	14,298	14,207	14,067	13,903	13,795	13,771	13,678	13,530	14,051
Somerset	5,895	5,912	5,929	5,894	5,897	5,844	5,827	5,856	5,807	5,793	5,753	5,810	5,851
Talbot	4,508	4,472	4,434	4,404	4,359	4,341	4,352	4,369	4,354	4,376	4,307	4,267	4,379
Washington	25,117	25,189	25,203	25,168	25,166	25,085	24,925	24,787	24,681	24,500	24,545	24,446	24,901
Wicomico	20,929	21,043	20,868	20,786	20,733	20,732	20,649	20,519	20,186	20,145	20,024	19,981	20,550
Worcester	6,872	6,791	6,663	6,695	6,791	6,920	6,911	6,910	6,907	6,865	6,785	6,573	6,807
Baltimore City	205,031	206,377	206,040	205,031	204,546	200,404	197,192	195,059	194,269	193,921	194,750	194,292	199,743
State Totals	778,671	781,497	780,140	779,303	776,164	768,057	755,752	749,467	745,125	734,542	730,875	725,871	758,789

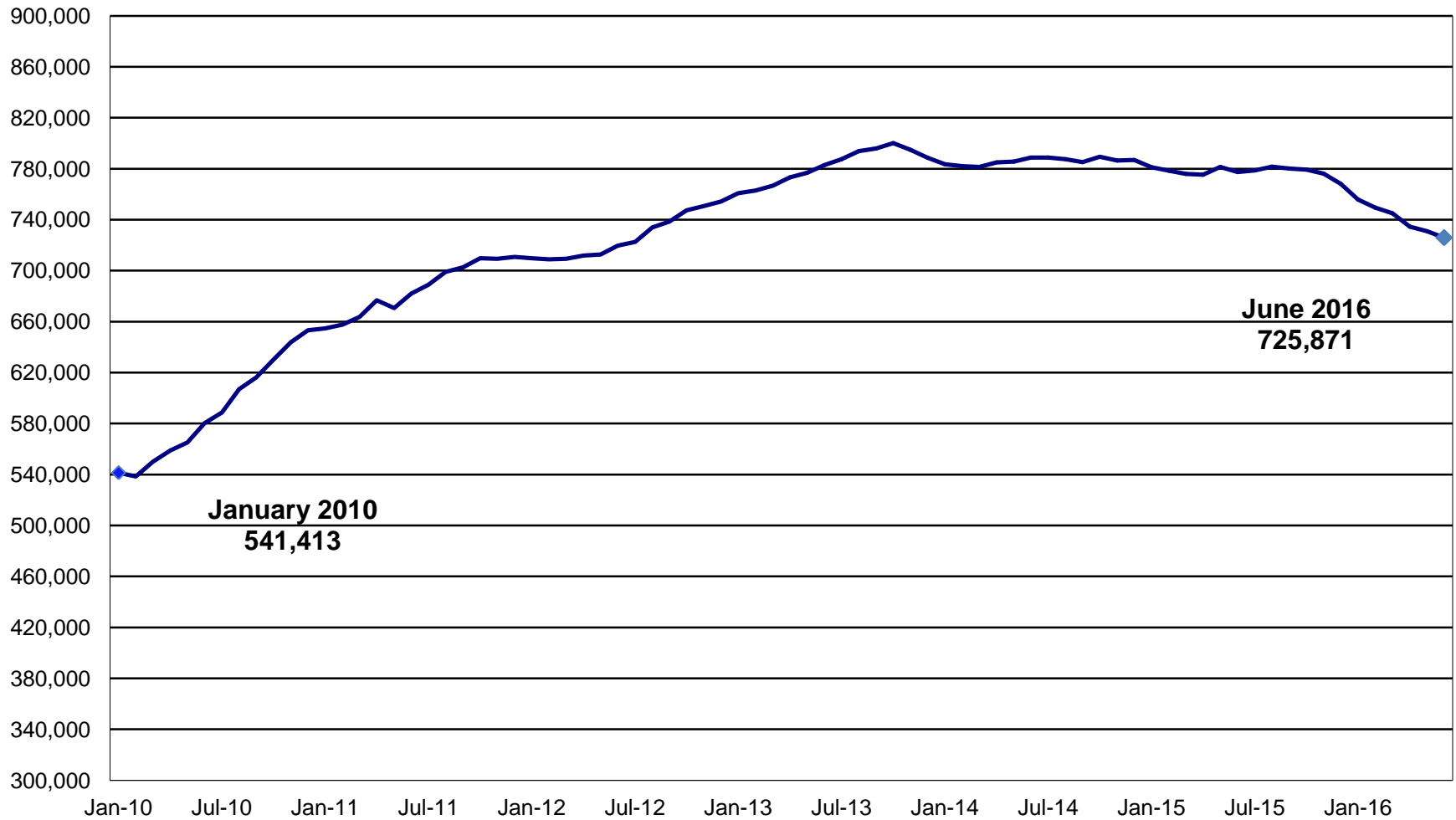
Food Supplement Program: Cases, Participants, & Issuances

<i>Net Expenditures</i>	2015 July	2015 August	2015 September	2015 October	2015 November	2015 December	2016 January	2016 February	2016 March	2016 April	2016 May	2016 June	FY '16 Average
Allegany	1,633.1	1,625.0	1,609.7	1,609.9	1,606.6	1,588.9	1,574.5	1,578.4	1,579.9	1,579.0	1,574.2	1,556.1	\$1,592.9
Anne Arundel	5,393.9	5,453.2	5,415.6	5,404.5	5,397.5	5,290.6	5,205.8	5,168.5	5,107.4	4,993.0	4,921.4	4,831.0	\$5,215.2
Baltimore Co.	13,294.7	13,388.6	13,321.5	13,309.6	13,231.6	13,018.4	12,754.7	12,681.7	12,658.8	12,281.5	12,172.6	12,070.1	\$12,848.6
Calvert	1,070.1	1,054.3	1,034.9	1,034.8	1,026.2	1,013.7	992.8	986.2	968.2	961.1	954.0	927.2	\$1,002.0
Caroline	746.6	746.9	740.0	744.9	736.8	731.7	718.5	729.1	722.8	725.9	724.9	721.7	\$732.5
Carroll	1,476.4	1,466.4	1,462.4	1,460.6	1,445.9	1,427.9	1,416.4	1,408.9	1,393.4	1,325.9	1,319.4	1,306.7	\$1,409.2
Cecil	1,835.1	1,817.3	1,818.8	1,823.1	1,811.8	1,814.2	1,793.6	1,800.4	1,779.7	1,768.4	1,749.1	1,750.2	\$1,796.8
Charles	2,196.5	2,211.8	2,204.0	2,181.7	2,194.2	2,155.0	2,113.1	2,097.4	2,086.7	2,088.2	2,050.0	2,046.0	\$2,135.4
Dorchester	1,090.4	1,073.1	1,069.8	1,059.8	1,053.2	1,030.7	1,013.8	1,021.5	1,010.2	1,010.6	1,001.4	983.1	\$1,034.8
Frederick	2,386.4	2,398.6	2,378.0	2,372.9	2,361.9	2,349.8	2,309.1	2,312.6	2,299.9	2,287.6	2,288.5	2,278.7	\$2,335.3
Garrett	420.5	417.4	415.2	419.2	422.4	420.5	415.4	424.8	422.8	417.5	419.5	413.1	\$419.0
Harford	2,674.5	2,691.7	2,666.3	2,660.2	2,630.5	2,550.1	2,486.5	2,497.4	2,481.5	2,489.7	2,468.7	2,435.2	\$2,561.0
Howard	2,375.2	2,388.9	2,383.0	2,406.3	2,392.2	2,371.1	2,340.2	2,346.6	2,332.8	2,340.0	2,326.8	2,283.7	\$2,357.2
Kent	336.1	337.5	336.9	336.7	338.4	335.8	330.2	334.1	329.3	327.2	329.8	325.1	\$333.1
Montgomery	8,245.4	8,262.2	8,212.5	8,250.2	8,181.9	8,098.0	7,934.6	7,857.9	7,800.9	7,607.0	7,509.4	7,436.1	\$7,949.7
Prince George's	13,572.3	13,692.3	13,693.0	13,746.4	13,719.2	13,552.9	13,227.3	13,086.3	12,996.5	12,363.1	12,167.6	11,853.8	\$13,139.2
Queen Anne's	525.4	525.8	518.9	522.4	524.6	526.9	529.4	526.3	522.6	518.9	517.1	512.3	\$522.5
St. Mary's	1,669.6	1,672.5	1,661.0	1,654.6	1,652.1	1,631.3	1,617.3	1,608.4	1,598.8	1,600.4	1,588.3	1,573.0	\$1,627.3
Somerset	679.9	679.1	681.8	683.3	680.7	672.6	674.6	685.5	675.0	669.1	659.2	663.4	\$675.3
Talbot	479.7	479.1	467.4	471.8	466.6	466.8	464.9	475.1	473.0	474.6	468.2	459.9	\$470.6
Washington	2,878.8	2,902.0	2,902.5	2,909.5	2,893.5	2,868.8	2,826.8	2,847.9	2,838.6	2,831.9	2,838.9	2,805.1	\$2,862.0
Wicomico	2,330.5	2,354.8	2,315.5	2,308.6	2,326.3	2,315.1	2,307.3	2,319.6	2,269.8	2,273.4	2,266.3	2,243.6	\$2,302.6
Worcester	746.0	732.9	708.1	709.9	741.7	758.3	759.2	774.4	771.2	763.2	749.6	711.2	\$743.8
Baltimore City	26,589.6	26,858.6	26,741.7	26,695.9	26,750.1	25,927.3	25,448.8	25,241.0	25,085.6	25,102.7	25,324.9	25,168.8	\$25,911.2
State Totals*	94,647.0	95,230.0	94,758.2	94,776.6	94,585.8	92,916.3	91,255.0	90,810.1	90,205.3	88,799.7	88,389.9	87,354.9	\$91,977.4

*DHR reports local statistics based on preliminary data. State totals for FSP expenditures are later revised in bold when final data are available.

[DATA: x \$1,000]

TOTAL FSP PARTICIPANTS



Temporary Disability Assistance Program: Applications Received, Applications Approved, & Cases Closed

Applications Received	2015 July	2015 August	2015 September	2015 October	2015 November	2015 December	2016 January	2016 February	2016 March	2016 April	2016 May	2016 June	FY '16 Average
Allegany	48	60	48	47	66	65	51	54	55	61	54	68	56
Anne Arundel	244	210	231	247	210	214	231	233	210	204	214	204	221
Baltimore Co.	522	508	478	464	451	439	418	441	481	452	458	493	467
Calvert	30	38	32	32	26	21	29	28	29	26	34	32	30
Caroline	14	25	20	22	14	27	15	18	21	16	16	17	19
Carroll	72	71	63	82	60	76	58	80	66	71	67	71	70
Cecil	69	74	103	81	64	83	94	82	76	70	79	87	80
Charles	39	31	50	46	49	40	53	48	61	59	40	45	47
Dorchester	27	25	19	24	14	20	25	26	20	24	12	24	22
Frederick	100	81	114	103	86	125	75	101	92	91	102	116	99
Garrett	6	5	8	13	10	5	7	9	12	6	14	7	9
Harford	105	107	111	109	80	91	106	95	88	91	78	119	98
Howard	94	77	71	95	70	70	60	70	80	69	103	85	79
Kent	10	9	10	13	8	7	7	12	7	9	8	5	9
Montgomery	246	250	216	235	235	232	210	260	307	268	254	274	249
Prince George's	246	284	267	274	228	247	294	308	369	306	297	392	293
Queen Anne's	15	10	7	14	22	15	17	16	8	17	5	6	13
St. Mary's	54	62	39	51	52	62	44	49	50	50	46	39	50
Somerset	15	11	17	19	16	6	17	14	8	8	15	12	13
Talbot	7	12	7	10	12	15	14	17	21	12	17	14	13
Washington	139	112	142	106	99	125	120	129	151	138	135	151	129
Wicomico	42	54	66	52	57	63	68	59	62	72	70	61	61
Worcester	31	28	28	30	35	24	32	29	18	18	28	19	27
Baltimore City	1,520	1,618	1,519	1,504	1,271	1,295	1,130	1,293	1,377	1,317	1,408	1,519	1,398
State Totals	3,695	3,762	3,666	3,673	3,235	3,367	3,175	3,471	3,669	3,455	3,554	3,860	3,549

Temporary Disability Assistance Program: Applications Received, Applications Approved, & Cases Closed

Applications Approved	2015	2015	2015	2015	2015	2015	2016	2016	2016	2016	2016	2016	FY '16
	July	August	September	October	November	December	January	February	March	April	May	June	Average
Allegany	30	27	31	22	19	40	25	20	29	30	28	27	27
Anne Arundel	61	50	54	68	53	43	37	44	71	52	58	53	54
Baltimore Co.	155	167	130	111	103	139	87	134	160	126	120	145	131
Calvert	6	7	13	8	4	5	4	9	7	6	5	10	7
Caroline	6	10	11	11	7	7	5	15	5	4	11	3	8
Carroll	20	21	15	20	13	19	16	13	19	32	19	17	19
Cecil	20	23	23	38	18	29	20	25	38	20	20	34	26
Charles	21	9	10	11	14	10	10	15	18	16	13	9	13
Dorchester	21	13	13	12	8	4	10	14	11	8	15	5	11
Frederick	40	25	26	27	43	26	30	22	28	27	30	25	29
Garrett	4	3	4	10	8	4	2	3	5	3	5	10	5
Harford	20	28	25	36	28	18	16	24	36	26	26	28	26
Howard	24	19	16	22	10	27	11	13	14	18	22	21	18
Kent	3	0	5	1	2	2	2	3	5	1	1	2	2
Montgomery	52	43	58	48	52	45	29	50	63	49	45	55	49
Prince George's	64	51	56	33	46	48	36	47	65	63	56	59	52
Queen Anne's	2	7	3	5	8	7	9	7	6	6	5	2	6
St. Mary's	27	35	24	29	30	23	30	21	26	12	18	22	25
Somerset	16	10	9	14	6	7	9	11	5	6	6	6	9
Talbot	4	1	6	0	4	2	3	5	7	3	2	7	4
Washington	33	26	29	32	25	39	30	23	40	37	25	39	32
Wicomico	21	23	21	27	17	31	13	25	26	30	22	22	23
Worcester	11	8	7	13	7	8	3	11	7	7	7	8	8
Baltimore City	758	741	788	738	558	702	505	569	678	543	538	681	650
State Totals	1,419	1,347	1,377	1,336	1,083	1,285	942	1,123	1,369	1,125	1,097	1,290	1,233

Temporary Disability Assistance Program: Applications Received, Applications Approved, & Cases Closed

Applications Not Approved	2015 July	2015 August	2015 September	2015 October	2015 November	2015 December	2016 January	2016 February	2016 March	2016 April	2016 May	2016 June	FY '16 Average
Allegany	29	36	32	26	40	41	37	38	36	354	32	43	62
Anne Arundel	124	132	157	165	177	151	147	153	162	168	159	144	153
Baltimore Co.	398	370	417	384	375	392	291	335	355	354	378	376	369
Calvert	30	28	35	29	27	31	15	24	35	20	27	29	28
Caroline	11	15	13	11	17	19	8	19	12	13	13	15	14
Carroll	38	49	54	44	43	68	52	54	46	70	50	49	51
Cecil	71	62	56	72	71	58	53	64	77	55	54	74	64
Charles	43	24	38	31	39	42	49	35	50	52	44	45	41
Dorchester	10	14	13	14	10	11	13	19	11	11	12	12	13
Frederick	66	86	76	78	86	76	69	88	73	73	81	75	77
Garrett	5	2	3	4	7	6	2	8	6	7	4	10	5
Harford	82	70	89	82	88	90	63	79	85	63	58	79	77
Howard	76	57	86	71	54	70	73	55	73	75	88	88	72
Kent	5	3	9	10	6	8	8	3	9	5	8	4	7
Montgomery	199	205	218	227	205	231	210	242	241	240	261	243	227
Prince George's	207	221	256	251	215	262	200	292	290	294	303	266	255
Queen Anne's	3	3	9	7	12	15	11	12	12	12	7	4	9
St. Mary's	24	35	27	29	30	23	40	38	27	29	34	35	31
Somerset	6	9	8	6	9	3	9	11	6	6	3	8	7
Talbot	10	6	8	10	9	11	13	12	12	15	9	15	11
Washington	108	106	122	91	92	86	89	117	112	105	109	117	105
Wicomico	38	32	40	51	46	43	52	46	53	48	58	44	46
Worcester	21	28	24	24	30	33	19	31	20	16	19	23	24
Baltimore City	1,020	851	976	923	866	836	701	759	816	797	868	920	861
State Totals	2,624	2,444	2,766	2,640	2,554	2,606	2,224	2,534	2,619	2,882	2,679	2,718	2,608

Temporary Disability Assistance Program: Applications Received, Applications Approved, & Cases Closed

Cases Closed	2015 July	2015 August	2015 September	2015 October	2015 November	2015 December	2016 January	2016 February	2016 March	2016 April	2016 May	2016 June	FY '16 Average
Allegany	26	38	25	32	43	28	24	26	24	31	32	35	30
Anne Arundel	50	37	76	66	52	58	57	42	41	52	48	59	53
Baltimore Co.	132	120	136	121	122	119	129	104	140	143	145	150	130
Calvert	9	12	3	8	9	1	11	8	14	14	10	12	9
Caroline	8	10	7	9	10	7	8	3	5	10	9	8	8
Carroll	27	23	31	24	22	15	18	12	23	18	20	21	21
Cecil	31	43	46	47	27	30	28	17	32	29	30	45	34
Charles	16	5	6	16	17	8	15	13	9	18	11	14	12
Dorchester	13	12	9	11	11	12	20	13	4	13	15	12	12
Frederick	27	20	27	30	21	24	22	22	29	41	23	31	26
Garrett	7	5	2	6	4	7	2	2	5	3	4	6	4
Harford	29	45	25	32	20	20	28	29	28	27	34	29	29
Howard	16	23	31	19	21	11	12	19	17	18	18	17	19
Kent	7	5	2	4	3	2	2	2	5	2	3	3	3
Montgomery	50	44	41	51	50	50	39	35	51	74	52	46	49
Prince George's	33	39	48	54	40	50	41	44	55	48	55	43	46
Queen Anne's	10	5	7	6	8	4	9	9	10	8	1	4	7
St. Mary's	24	15	23	32	24	22	24	28	25	24	31	24	25
Somerset	15	9	9	10	13	14	6	13	12	9	7	7	10
Talbot	7	9	8	4	4	2	5	3	7	5	3	8	5
Washington	34	31	38	33	40	27	31	28	27	22	33	43	32
Wicomico	26	26	25	17	20	26	17	17	21	61	28	32	26
Worcester	15	12	18	4	5	8	9	8	11	8	9	10	10
Baltimore City	930	781	745	714	694	732	718	612	774	808	699	806	751
State Totals	1,542	1,369	1,388	1,350	1,280	1,277	1,275	1,109	1,369	1,486	1,320	1,465	1,353

Temporary Disability Assistance Program: Recipients and Net Expenditures

Total Recipients	2015 July	2015 August	2015 September	2015 October	2015 November	2015 December	2016 January	2016 February	2016 March	2016 April	2016 May	2016 June	FY '16 Average
Allegany	411	397	412	407	383	400	408	395	416	418	407	402	405
Anne Arundel	612	646	610	634	616	610	585	587	652	636	648	621	621
Baltimore Co.	1,675	1,750	1,689	1,685	1,645	1,714	1,627	1,682	1,693	1,655	1,639	1,640	1,675
Calvert	108	103	116	122	109	118	114	121	109	104	99	102	110
Caroline	85	87	94	97	92	95	91	112	100	95	105	92	95
Carroll	228	218	201	198	189	203	199	196	204	216	216	225	208
Cecil	333	332	315	327	296	302	296	315	334	322	318	316	317
Charles	190	181	185	184	179	184	176	184	191	185	191	185	185
Dorchester	160	152	164	164	160	152	144	153	162	153	163	148	156
Frederick	288	284	282	284	319	307	324	322	318	305	303	293	302
Garrett	55	56	59	67	70	69	67	69	71	70	69	80	67
Harford	339	332	326	344	342	346	329	327	343	342	329	329	336
Howard	223	217	205	211	188	213	206	196	191	195	195	193	203
Kent	40	33	39	33	33	36	33	35	35	36	33	33	35
Montgomery	556	554	585	565	576	565	551	573	595	578	542	567	567
Prince George's	537	540	552	511	520	533	524	522	559	573	564	595	544
Queen Anne's	61	65	60	62	59	63	67	68	66	60	67	61	63
St. Mary's	251	274	279	273	288	276	285	277	280	262	247	253	270
Somerset	97	103	103	109	103	102	107	103	103	102	101	103	103
Talbot	66	60	57	53	54	55	54	57	58	59	56	65	58
Washington	395	400	389	401	379	414	401	394	431	450	430	435	410
Wicomico	302	297	299	314	306	319	312	321	337	310	304	295	310
Worcester	113	111	100	112	108	116	104	109	108	106	102	98	107
Baltimore City	11,338	11,298	11,396	11,408	11,233	11,333	11,053	11,025	11,029	10,745	10,621	10,592	11,089
State Totals*	18,463	18,490	18,517	18,565	18,247	18,525	18,057	18,143	18,385	17,977	17,749	17,723	18,237

*DHR reports local statistics based on preliminary data. State totals for recipients/expenditures are later revised **in bold** when final data are available.

Temporary Disability Assistance Program: Recipients and Net Expenditures

Short Term Recipients	2015 July	2015 August	2015 September	2015 October	2015 November	2015 December	2016 January	2016 February	2016 March	2016 April	2016 May	2016 June	FY '16 Average
Allegany	17	19	25	25	22	28	24	23	22	14	14	19	21
Anne Arundel	101	92	83	105	87	73	61	66	80	75	68	68	80
Baltimore Co.	261	284	273	276	276	305	268	257	243	218	202	195	255
Calvert	12	6	8	10	9	7	9	13	10	8	12	12	10
Caroline	11	13	17	15	16	13	14	21	12	12	15	11	14
Carroll	45	43	33	32	31	42	30	26	27	31	34	40	35
Cecil	20	28	28	41	31	36	30	44	48	46	41	48	37
Charles	32	28	23	14	17	14	13	10	10	10	8	15	16
Dorchester	29	25	23	33	29	25	19	24	29	27	31	25	27
Frederick	55	51	40	38	43	47	48	39	41	53	49	50	46
Garrett	7	8	5	3	5	4	3	6	8	9	12	14	7
Harford	36	39	41	35	36	36	27	29	34	35	25	27	33
Howard	25	14	18	19	15	14	24	25	22	24	32	26	22
Kent	6	4	4	2	3	4	2	1	1	2	1	1	3
Montgomery	105	105	120	117	117	118	122	129	134	132	105	121	119
Prince George's	127	121	129	107	93	101	92	87	106	100	95	120	107
Queen Anne's	10	11	9	11	10	7	9	8	6	4	4	3	8
St. Mary's	43	53	53	60	69	65	73	71	68	55	47	39	58
Somerset	21	20	23	24	18	22	19	13	11	13	12	10	17
Talbot	7	3	5	4	5	5	5	4	5	6	4	6	5
Washington	34	38	39	38	33	43	27	29	30	39	37	42	36
Wicomico	22	24	25	24	20	24	21	25	35	33	35	39	27
Worcester	20	18	18	25	23	28	20	13	10	9	10	11	17
Baltimore City	519	498	503	521	490	525	469	477	496	483	441	445	489
State Totals	1,565	1,545	1,545	1,579	1,498	1,586	1,429	1,440	1,488	1,438	1,334	1,387	1,486

Temporary Disability Assistance Program: Recipients and Net Expenditures

Long Term Recipients	2015 July	2015 August	2015 September	2015 October	2015 November	2015 December	2016 January	2016 February	2016 March	2016 April	2016 May	2016 June	FY '16 Average
Allegany	394	378	387	382	361	372	384	372	394	404	393	383	384
Anne Arundel	511	554	527	529	529	537	524	521	572	561	580	553	542
Baltimore Co.	1,414	1,466	1,416	1,409	1,369	1,409	1,359	1,425	1,450	1,437	1,437	1,445	1,420
Calvert	96	97	108	112	100	111	105	108	99	96	87	90	101
Caroline	74	74	77	82	76	82	77	91	88	83	90	81	81
Carroll	183	175	168	166	158	161	169	170	177	185	182	185	173
Cecil	313	304	287	286	265	266	266	271	286	276	277	268	280
Charles	158	153	162	170	162	170	163	174	181	175	183	170	168
Dorchester	131	127	141	131	131	127	125	129	133	126	132	123	130
Frederick	233	233	242	246	276	260	276	283	277	252	254	243	256
Garrett	48	48	54	64	65	65	64	63	63	61	57	66	60
Harford	303	293	285	309	306	310	302	298	309	307	304	302	302
Howard	198	203	187	192	173	199	182	171	169	171	163	167	181
Kent	34	29	35	31	30	32	31	34	34	34	32	32	32
Montgomery	451	449	465	448	459	447	429	444	461	446	437	446	449
Prince George's	410	419	423	404	427	432	432	435	453	473	469	475	438
Queen Anne's	51	54	51	51	49	56	58	60	60	56	63	58	56
St. Mary's	208	221	226	213	219	211	212	206	212	207	200	214	212
Somerset	76	83	80	85	85	80	88	90	92	89	89	93	86
Talbot	59	57	52	49	49	50	49	53	53	53	52	59	53
Washington	361	362	350	363	346	371	374	365	401	411	393	393	374
Wicomico	280	273	274	290	286	295	291	296	302	277	269	256	282
Worcester	93	93	82	87	85	88	84	96	98	97	92	87	90
Baltimore City	10,819	10,800	10,893	10,887	10,743	10,808	10,584	10,548	10,533	10,262	10,180	10,147	10,600
State Totals	16,898	16,945	16,972	16,986	16,749	16,939	16,628	16,703	16,897	16,539	16,415	16,336	16,751

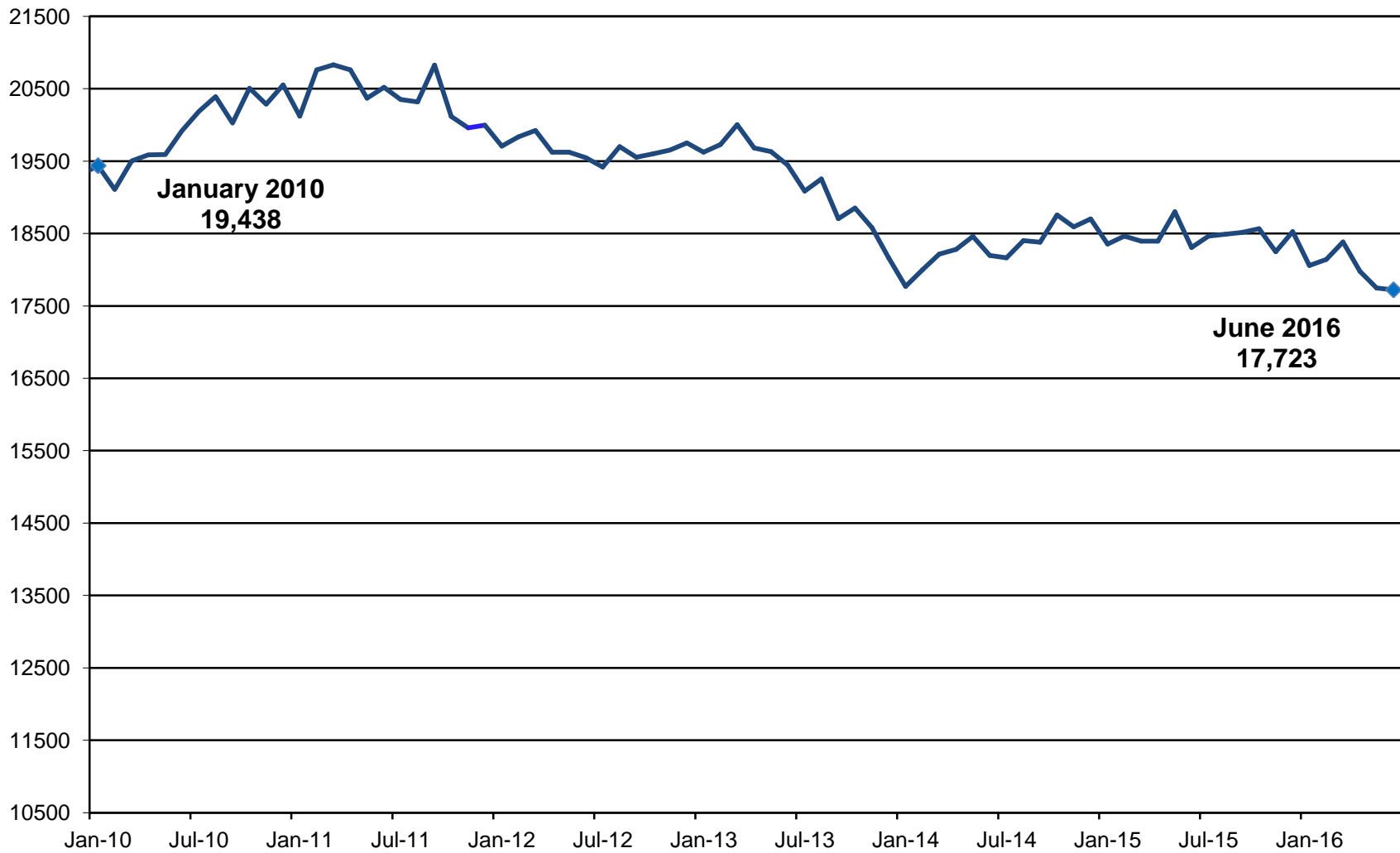
Temporary Disability Assistance Program: Recipients and Net Expenditures

Net Expenditures	2015 July	2015 August	2015 September	2015 October	2015 November	2015 December	2016 January	2016 February	2016 March	2016 April	2016 May	2016 June	FY '16 Average
Allegany	60.7	65.7	60.0	41.2	64.1	69.4	60.3	70.5	66.4	64.1	69.6	67.7	\$63.3
Anne Arundel	101.3	101.5	87.3	97.7	93.9	85.0	99.2	107.5	108.6	100.2	105.8	90.1	\$98.2
Baltimore Co.	263.5	291.3	279.5	292.9	255.3	262.0	267.7	270.0	260.7	243.5	232.3	232.0	\$262.6
Calvert	18.5	18.7	20.7	22.5	20.2	20.1	18.9	14.1	15.3	17.8	3.1	11.4	\$16.8
Caroline	15.7	14.8	15.4	4.8	17.0	15.3	15.5	19.4	17.9	17.2	18.1	7.2	\$14.9
Carroll	32.0	15.4	31.2	33.0	20.4	29.3	36.0	13.9	34.2	38.3	36.1	37.2	\$29.8
Cecil	56.9	58.7	36.8	56.1	45.2	43.5	54.3	52.3	44.9	50.6	55.6	47.9	\$50.2
Charles	34.8	32.4	27.4	30.1	33.1	30.7	28.9	30.3	34.6	19.7	35.2	33.9	\$30.9
Dorchester	21.3	28.1	24.4	18.7	11.1	10.3	11.6	28.2	27.7	18.7	29.9	26.2	\$21.3
Frederick	50.8	44.9	50.4	56.9	58.0	60.6	48.9	43.9	60.5	30.6	34.4	36.3	\$48.0
Garrett	10.2	10.2	9.6	12.4	12.0	12.7	12.3	12.3	12.2	12.9	10.5	4.6	\$11.0
Harford	40.3	53.7	46.0	55.2	53.0	54.1	50.0	43.6	53.6	44.3	43.0	35.3	\$47.7
Howard	37.7	28.6	30.1	37.3	29.6	34.9	29.9	35.3	15.7	35.3	33.7	32.7	\$31.7
Kent	6.1	6.1	5.1	5.8	6.1	5.7	6.1	6.3	6.5	3.0	4.8	6.1	\$5.6
Montgomery	83.4	96.6	89.1	83.1	89.5	72.2	77.0	86.9	72.1	87.7	94.8	94.3	\$85.5
Prince George's	69.4	92.9	72.6	62.9	74.6	66.3	77.7	79.1	92.3	93.6	81.6	83.9	\$78.9
Queen Anne's	10.5	5.2	8.7	10.2	3.7	11.6	12.3	0.0	9.8	10.7	12.4	11.2	\$8.9
St. Mary's	45.6	40.7	43.1	43.9	44.3	47.2	47.9	48.4	51.7	42.6	34.5	42.9	\$44.4
Somerset	17.8	17.0	19.1	10.2	19.1	11.3	19.8	19.1	12.6	18.9	18.7	19.0	\$16.9
Talbot	6.2	10.5	5.5	6.1	10.0	10.2	10.0	9.5	10.7	10.9	10.3	12.0	\$9.3
Washington	64.4	57.2	28.7	38.6	49.5	64.7	70.8	66.4	59.4	77.9	69.5	65.1	\$59.4
Wicomico	39.8	42.8	46.7	51.3	50.3	58.8	43.1	53.1	41.1	55.4	41.4	28.0	\$46.0
Worcester	18.6	14.7	16.6	19.2	19.5	21.4	13.3	17.0	16.2	12.7	6.7	17.2	\$16.1
Baltimore City	1,884.1	1,946.6	1,928.4	1,905.0	1,932.9	1,887.8	1,915.8	1,913.2	1,844.0	1,720.1	1,697.0	1,734.4	\$1,859.1
State Totals*	2,989.6	3,094.4	2,982.2	2,994.9	3,012.2	2,985.2	3,027.3	3,040.4	2,968.5	2,826.4	2,779.1	2,776.8	\$2,956.4

*DHR reports local statistics based on preliminary data. State totals for recipients/expenditures are later revised **in bold** when final data are available.

[DATA: x \$1,000]

TDAP CASELOAD: PAID CASES



Public Assistance to Adults: Applications Received, Applications Approved, & Cases Closed

Applications Received	2015 July	2015 August	2015 September	2015 October	2015 November	2015 December	2016 January	2016 February	2016 March	2016 April	2016 May	2016 June	FY '16 Average
Allegany	2	5	2	1	3	2	3	3	2	2	4	2	3
Anne Arundel	7	3	2	3	6	4	1	2	4	5	5	5	4
Baltimore Co.	4	9	4	3	7	3	0	2	3	1	5	2	4
Calvert	0	1	2	0	1	2	0	0	0	3	3	1	1
Caroline	0	0	3	0	0	0	0	0	1	0	1	0	0
Carroll	0	1	2	2	3	0	1	3	1	0	0	1	1
Cecil	2	1	1	1	0	1	1	1	2	0	1	0	1
Charles	1	0	0	1	1	0	1	0	0	1	0	0	0
Dorchester	0	2	1	2	0	2	1	1	2	1	0	4	1
Frederick	4	0	4	3	3	5	5	1	5	2	2	2	3
Garrett	0	0	0	0	0	0	0	0	0	1	3	1	0
Harford	3	4	4	2	0	2	2	9	3	1	4	3	3
Howard	3	2	7	6	3	7	0	5	2	1	2	2	3
Kent	1	3	1	0	0	0	2	1	0	1	1	1	1
Montgomery	9	4	0	4	7	10	2	10	9	13	17	9	8
Prince George's	2	4	15	13	5	15	0	21	18	13	6	22	11
Queen Anne's	0	0	1	0	0	1	0	1	0	0	0	3	1
St. Mary's	3	1	1	1	4	1	2	2	2	2	1	1	2
Somerset	0	2	0	2	0	0	0	0	0	0	0	1	0
Talbot	0	0	0	0	0	0	0	0	0	1	0	0	0
Washington	4	3	1	1	2	2	1	1	4	1	1	0	2
Wicomico	4	1	2	4	3	6	4	5	4	3	10	4	4
Worcester	0	1	1	1	1	0	0	0	0	0	0	0	0
Baltimore City	55	53	49	75	45	39	57	54	84	46	36	65	55
State Totals	104	100	103	125	94	102	83	122	146	98	102	129	109

Public Assistance to Adults: Applications Received, Applications Approved, & Cases Closed

Applications Approved	2015 July	2015 August	2015 September	2015 October	2015 November	2015 December	2016 January	2016 February	2016 March	2016 April	2016 May	2016 June	FY '16 Average
Allegany	2	4	1	0	2	4	2	4	3	1	5	1	2
Anne Arundel	6	4	2	3	4	6	1	5	0	8	2	6	4
Baltimore Co.	9	13	10	8	10	6	3	4	10	10	9	8	8
Calvert	0	0	0	2	0	2	0	0	0	1	5	0	1
Caroline	0	0	1	2	0	1	0	0	0	1	0	0	0
Carroll	2	1	1	0	4	2	1	2	1	1	0	0	1
Cecil	2	1	1	1	0	1	0	1	3	0	1	0	1
Charles	1	0	0	1	1	0	1	0	0	1	0	0	0
Dorchester	1	1	2	3	0	2	2	1	2	1	0	3	2
Frederick	4	0	5	3	3	6	5	1	6	3	4	2	4
Garrett	0	0	0	0	0	0	0	0	0	0	2	0	0
Harford	3	3	1	5	1	0	4	8	2	2	3	1	3
Howard	7	3	7	9	3	10	4	6	1	1	3	4	5
Kent	3	0	3	0	0	0	0	2	0	0	0	4	1
Montgomery	9	5	0	8	2	12	4	9	13	13	19	6	8
Prince George's	4	12	24	15	13	19	4	21	23	14	14	28	16
Queen Anne's	0	0	1	0	0	0	0	0	1	0	0	2	0
St. Mary's	3	1	1	1	4	1	2	2	2	2	1	1	2
Somerset	0	2	0	1	1	0	0	0	0	0	0	1	0
Talbot	0	1	0	0	0	0	0	0	0	0	1	0	0
Washington	4	3	1	1	1	2	2	1	4	1	1	0	2
Wicomico	6	2	2	4	2	7	4	5	4	5	9	6	5
Worcester	0	1	1	0	1	1	0	0	0	1	0	0	0
Baltimore City	49	55	59	50	66	50	41	49	75	57	43	41	53
State Totals	115	112	123	117	118	132	80	121	150	123	122	114	119

Public Assistance to Adults: Applications Received, Applications Approved, & Cases Closed

Applications Not Approved	2015 July	2015 August	2015 September	2015 October	2015 November	2015 December	2016 January	2016 February	2016 March	2016 April	2016 May	2016 June	FY '16 Average
Allegany	0	1	1	1	1	0	1	1	1	0	2	0	1
Anne Arundel	2	0	0	1	0	0	1	1	0	1	0	1	1
Baltimore Co.	0	1	0	0	1	1	1	0	2	0	1	1	1
Calvert	0	0	1	0	0	1	0	0	0	0	4	0	1
Caroline	0	0	0	1	0	0	0	0	0	0	0	1	0
Carroll	0	1	1	1	2	0	0	0	2	0	0	0	1
Cecil	0	0	0	0	0	0	0	0	0	0	0	0	0
Charles	0	0	0	0	0	0	0	0	0	0	0	0	0
Dorchester	1	1	0	0	1	2	0	0	0	0	0	1	1
Frederick	0	1	0	0	0	0	0	0	0	0	0	0	0
Garrett	1	0	0	0	0	0	0	0	0	0	1	1	0
Harford	1	1	0	2	1	0	1	1	0	1	2	0	1
Howard	0	1	0	0	2	1	0	0	0	1	1	0	1
Kent	2	0	2	0	0	0	0	1	1	0	1	0	1
Montgomery	0	1	0	1	4	2	3	1	5	5	4	1	2
Prince George's	1	6	2	1	5	2	0	2	1	2	4	1	2
Queen Anne's	0	0	0	0	0	0	1	0	0	0	0	1	0
St. Mary's	0	0	0	0	0	0	1	0	0	0	0	0	0
Somerset	0	0	0	1	1	0	0	0	0	0	0	0	0
Talbot	0	0	0	0	0	0	0	0	0	0	0	0	0
Washington	1	0	0	1	1	0	1	1	0	0	1	0	1
Wicomico	2	1	0	0	1	0	0	0	0	0	1	0	0
Worcester	0	0	0	0	0	0	0	0	0	1	0	0	0
Baltimore City	33	23	21	17	19	12	13	14	25	26	9	19	19
State Totals	44	38	28	27	39	21	23	22	37	37	31	27	31

Public Assistance to Adults: Applications Received, Applications Approved, & Cases Closed

Cases Closed	2014 July	2014 August	2014 September	2014 October	2014 November	2014 December	2015 January	2015 February	2015 March	2015 April	2015 May	2015 June	FY '15 Average
Allegany	3	6	1	1	1	1	3	5	3	2	2	2	3
Anne Arundel	9	3	7	8	2	3	2	2	5	6	4	7	5
Baltimore Co.	7	8	14	7	6	7	7	14	7	5	6	13	8
Calvert	1	2	4	1	0	1	1	2	1	1	3	1	2
Caroline	0	2	3	1	0	0	0	0	0	2	0	0	1
Carroll	2	2	2	1	3	2	0	3	3	3	0	0	2
Cecil	0	0	1	2	0	1	2	1	2	1	0	1	1
Charles	0	2	0	1	1	1	0	1	0	0	0	0	1
Dorchester	0	1	1	1	1	3	1	1	2	0	1	4	1
Frederick	3	6	2	10	3	4	4	3	4	3	4	2	4
Garrett	0	0	0	2	0	0	0	0	0	0	1	0	0
Harford	5	7	2	3	2	5	3	2	8	3	5	3	4
Howard	1	2	7	13	4	8	2	9	1	4	4	5	5
Kent	1	0	0	2	0	0	0	1	0	1	1	2	1
Montgomery	7	10	5	2	9	11	12	9	14	9	22	11	10
Prince George's	5	17	28	15	12	15	6	32	20	20	16	23	17
Queen Anne's	1	2	1	0	0	1	0	1	3	0	0	1	1
St. Mary's	3	5	1	1	4	0	0	2	0	1	1	1	2
Somerset	0	1	0	1	0	0	0	0	0	0	1	0	0
Talbot	0	0	0	0	0	0	1	1	0	0	1	0	0
Washington	1	4	1	4	1	3	1	1	1	0	5	1	2
Wicomico	3	4	3	6	5	7	7	8	11	3	4	4	5
Worcester	0	0	0	0	0	2	1	0	1	0	0	0	0
Baltimore City	42	55	61	61	81	43	54	42	56	45	56	65	55
State Totals	94	139	144	143	135	118	107	140	142	109	137	146	130

Public Assistance to Adults: Paid Recipients and Net Expenditures

Total Recipients	2015 July	2015 August	2015 September	2015 October	2015 November	2015 December	2016 January	2016 February	2016 March	2016 April	2016 May	2016 June	FY '16 Average
Allegany	39	36	37	36	37	40	38	38	43	38	37	39	38
Anne Arundel	279	281	275	269	279	275	276	282	274	273	275	272	276
Baltimore Co.	421	430	426	430	432	423	420	409	418	414	422	413	422
Calvert	27	25	22	25	23	24	22	21	19	20	26	20	23
Caroline	15	15	13	16	13	24	14	14	13	12	12	12	14
Carroll	82	76	75	74	75	14	75	73	72	72	73	71	69
Cecil	37	38	39	38	38	74	36	36	37	36	37	36	40
Charles	43	53	41	42	47	38	42	41	41	42	42	42	43
Dorchester	35	38	38	42	39	41	40	39	39	40	40	38	39
Frederick	212	201	205	206	194	198	199	197	200	198	201	199	201
Garrett	3	3	3	2	2	2	2	2	2	2	5	4	3
Harford	83	77	77	83	81	76	80	83	80	79	77	76	79
Howard	161	157	157	155	148	152	159	153	152	150	150	148	154
Kent	16	13	17	15	16	14	13	15	14	14	13	16	15
Montgomery	402	396	390	412	390	389	384	385	389	384	384	377	390
Prince George's	452	470	479	469	463	453	462	451	457	439	452	441	457
Queen Anne's	23	23	22	22	22	23	23	24	24	22	22	23	23
St. Mary's	53	51	52	51	52	53	54	54	56	57	56	57	54
Somerset	6	7	7	7	7	9	9	9	9	9	8	11	8
Talbot	9	10	9	9	18	9	8	7	8	8	8	7	9
Washington	88	89	88	85	86	85	87	85	89	89	86	85	87
Wicomico	100	97	98	96	92	93	91	84	84	83	86	89	91
Worcester	9	10	11	11	12	11	10	11	10	11	11	10	11
Baltimore City	990	1,009	999	987	983	949	960	983	1,016	986	1,011	956	986
State Totals	3,585	3,605	3,580	3,582	3,549	3,469	3,504	3,496	3,546	3,478	3,534	3,442	3,531

Public Assistance to Adults: Paid Recipients and Net Expenditures

Net Expenditures	2015 July	2015 August	2015 September	2015 October	2015 November	2015 December	2016 January	2016 February	2016 March	2016 April	2016 May	2016 June	FY '16 Average
Allegany	\$8,979	\$8,733	\$8,815	\$8,651	\$8,733	\$9,061	\$8,807	\$8,235	\$8,067	\$7,657	\$7,575	\$7,739	\$8,420.8
Anne Arundel	\$26,526	\$26,668	\$25,850	\$22,706	\$26,233	\$26,200	\$25,216	\$26,689	\$26,107	\$26,036	\$23,908	\$25,758	\$25,658.0
Baltimore Co.	\$58,036	\$58,693	\$58,942	\$60,436	\$58,359	\$61,552	\$58,150	\$56,715	\$57,259	\$56,127	\$57,043	\$55,023	\$58,027.9
Calvert	\$5,158	\$5,240	\$3,490	\$5,062	\$4,235	\$4,317	\$4,153	\$4,069	\$3,261	\$3,346	\$3,901	\$3,174	\$4,117.1
Caroline	\$3,763	\$3,763	\$2,472	\$2,718	\$2,472	\$2,553	\$2,537	\$2,469	\$2,471	\$1,746	\$1,746	\$1,746	\$2,538.0
Carroll	\$7,581	\$6,680	\$6,610	\$6,364	\$6,502	\$6,718	\$6,720	\$6,474	\$5,647	\$5,892	\$5,811	\$5,810	\$6,400.6
Cecil	\$3,034	\$3,116	\$3,116	\$3,116	\$3,116	\$3,116	\$2,952	\$2,952	\$2,952	\$2,952	\$3,034	\$2,952	\$3,034.0
Charles	\$13,425	\$14,165	\$12,759	\$13,400	\$14,284	\$12,191	\$11,955	\$11,797	\$11,893	\$12,075	\$10,729	\$12,085	\$12,563.2
Dorchester	\$8,687	\$8,604	\$8,940	\$9,429	\$9,182	\$9,099	\$9,006	\$8,770	\$5,968	\$8,837	\$8,837	\$8,673	\$8,669.3
Frederick	\$28,287	\$27,296	\$27,363	\$25,989	\$25,494	\$26,789	\$25,882	\$26,440	\$26,638	\$26,433	\$26,335	\$26,396	\$26,611.7
Garrett	\$246	\$246	\$246	\$164	\$164	\$164	\$164	\$164	\$164	\$164	\$410	\$328	\$218.7
Harford	\$15,186	\$15,186	\$14,856	\$10,115	\$15,771	\$16,015	\$16,263	\$17,168	\$16,721	\$16,920	\$16,665	\$17,071	\$15,661.4
Howard	\$16,156	\$16,565	\$15,799	\$16,474	\$14,215	\$15,824	\$15,102	\$15,128	\$15,037	\$16,050	\$15,730	\$16,629	\$15,725.8
Kent	\$1,312	\$1,054	\$1,394	\$1,148	\$1,311	\$1,148	\$1,066	\$1,230	\$1,148	\$1,148	\$737	\$1,312	\$1,167.3
Montgomery	\$45,514	\$45,055	\$43,654	\$45,609	\$44,052	\$44,094	\$42,718	\$43,107	\$43,998	\$43,762	\$42,350	\$43,049	\$43,913.6
Prince George's	\$49,026	\$54,042	\$53,930	\$51,980	\$51,170	\$52,384	\$56,768	\$50,882	\$53,431	\$49,702	\$50,502	\$50,228	\$52,003.8
Queen Anne's	\$1,886	\$1,886	\$1,804	\$1,804	\$1,307	\$1,886	\$1,886	\$1,968	\$1,968	\$1,804	\$806	\$1,886	\$1,740.9
St. Mary's	\$6,642	\$7,745	\$8,075	\$7,747	\$8,075	\$8,156	\$8,075	\$8,214	\$8,399	\$8,480	\$8,426	\$8,391	\$8,035.6
Somerset	\$492	\$574	\$574	\$574	\$574	\$738	\$738	\$738	\$734	\$738	\$656	\$902	\$669.3
Talbot	\$738	\$1,743	\$1,630	\$75	\$1,419	\$747	\$665	\$583	\$665	\$756	\$665	\$583	\$855.8
Washington	\$35,550	\$34,671	\$33,443	\$32,600	\$32,848	\$31,579	\$33,653	\$33,737	\$34,935	\$35,153	\$32,827	\$32,634	\$33,635.9
Wicomico	\$20,149	\$20,338	\$20,665	\$20,618	\$19,970	\$19,729	\$19,279	\$18,952	\$19,088	\$19,974	\$20,867	\$21,368	\$20,083.0
Worcester	\$657	\$739	\$1,164	\$1,362	\$1,444	\$1,362	\$820	\$902	\$820	\$902	\$902	\$820	\$991.2
Baltimore City	\$325,683	\$349,564	\$344,081	\$353,701	\$333,315	\$354,496	\$317,508	\$342,154	\$350,126	\$385,843	\$269,788	\$372,326	\$341,548.7
State Totals	\$682,712	\$712,366	\$699,671	\$701,841	\$684,245	\$709,918	\$670,082	\$689,536	\$697,498	\$732,497	\$610,250	716,883	\$692,291.5

Emergency Assistance to Families with Children: Grants Approved and Net Expenditures

Total Grants	2015 July	2015 August	2015 September	2015 October	2015 November	2015 December	2016 January	2016 February	2016 March	2016 April	2016 May	2016 June	FY '16 Average
Allegany	40	55	42	48	51	37	33	30	22	47	46	58	42
Anne Arundel	32	15	22	47	27	24	19	20	15	21	23	14	23
Baltimore Co.	195	195	156	232	151	152	101	91	117	144	156	201	158
Calvert	4	3	7	4	2	0	2	2	3	5	6	14	4
Caroline	2	1	2	1	3	3	1	2	0	1	4	7	2
Carroll	5	1	6	4	4	4	5	3	2	4	4	3	4
Cecil	8	3	9	6	11	10	6	4	9	13	31	4	10
Charles	6	4	1	4	0	0	0	0	0	0	0	0	1
Dorchester	4	3	6	4	2	5	3	6	3	5	4	8	4
Frederick	0	23	65	12	25	36	0	5	12	13	15	47	21
Garrett	1	4	4	4	11	3	3	3	7	8	9	6	5
Harford	7	25	23	30	16	14	19	27	24	16	24	48	23
Howard	0	5	15	42	7	3	1	0	1	0	0	0	6
Kent	2	2	0	1	4	1	0	2	3	0	5	3	2
Montgomery	62	59	45	57	55	42	32	39	38	28	45	73	48
Prince George's	44	50	40	35	45	55	16	13	16	19	20	31	32
Queen Anne's	1	1	0	3	4	3	2	1	2	1	0	0	2
St. Mary's	59	36	32	51	27	31	27	26	36	58	36	39	38
Somerset	3	4	3	8	5	1	2	2	4	1	4	6	4
Talbot	4	3	5	7	5	4	1	4	5	4	1	5	4
Washington	16	15	16	42	23	19	17	14	13	18	16	2	18
Wicomico	16	15	23	21	8	27	16	17	12	18	29	5	17
Worcester	1	0	0	4	7	0	3	4	0	0	0	0	2
Baltimore City	582	626	604	759	597	337	11	100	66	0	0	0	307
State Totals	1,094	1,148	1,126	1,426	1,090	811	320	415	410	424	478	3,442	1,015

Emergency Assistance to Families with Children: Grants Approved and Net Expenditures

Net Expenditures	2015 July	2015 August	2015 September	2015 October	2015 November	2015 December	2016 January	2016 February	2016 March	2016 April	2016 May	2016 June	FY '16 Average
Allegany	\$13,230	\$21,500	\$15,091	\$17,415	\$18,465	\$14,450	\$12,367	\$10,677	\$7,621	\$17,056	\$19,177	\$34,071	\$16,759.9
Anne Arundel	\$16,011	\$9,952	\$13,447	\$25,104	\$13,244	\$14,816	\$9,815	\$12,624	\$7,155	\$10,856	\$11,083	\$7,934	\$12,670.1
Baltimore Co.	\$90,280	\$92,184	\$74,103	\$111,527	\$69,954	\$72,461	\$47,233	\$41,493	\$55,261	\$69,388	\$74,086	\$94,453	\$74,368.6
Calvert	\$1,526	\$1,600	\$3,400	\$1,590	\$800	\$0	\$520	\$1,465	\$2,166	\$2,533	\$3,281	\$11,433	\$2,526.1
Caroline	\$800	\$500	\$800	\$438	\$1,183	\$876	\$500	\$600	\$0	\$300	\$1,101	\$2,940	\$836.5
Carroll	\$1,000	\$200	\$1,200	\$799	\$800	\$770	\$1,050	\$700	\$400	\$850	\$825	\$650	\$770.3
Cecil	\$1,837	\$1,100	\$3,261	\$2,150	\$4,184	\$3,579	\$2,347	\$1,538	\$3,179	\$6,778	\$20,494	\$1,752	\$4,349.9
Charles	\$1,623	\$875	\$250	\$911	\$0	\$0	\$0	\$0	\$0	\$0	\$0	\$0	\$304.9
Dorchester	\$829	\$1,050	\$1,862	\$1,135	\$476	\$1,700	\$924	\$1,754	\$823	\$1,687	\$1,231	\$2,543	\$1,334.5
Frederick	\$0	\$4,143	\$12,235	\$2,184	\$4,763	\$6,756	\$0	\$1,000	\$2,270	\$2,483	\$3,064	\$11,437	\$4,194.6
Garrett	\$396	\$1,632	\$1,491	\$2,121	\$2,701	\$1,082	\$1,056	\$1,360	\$3,411	\$3,479	\$4,205	\$4,017	\$2,245.9
Harford	\$3,400	\$12,415	\$11,000	\$14,627	\$8,000	\$5,967	\$9,006	\$13,350	\$12,000	\$8,000	\$14,527	\$34,399	\$12,224.2
Howard	\$0	\$3,245	\$9,574	\$30,206	\$5,000	\$2,250	\$750	\$0	\$750	\$0	\$0	\$0	\$4,314.6
Kent	\$500	\$397	\$0	\$250	\$898	\$250	\$0	\$250	\$750	\$0	\$1,238	\$750	\$440.2
Montgomery	\$65,775	\$65,547	\$48,383	\$59,997	\$60,381	\$51,408	\$35,060	\$45,902	\$42,533	\$30,548	\$46,133	\$71,919	\$51,965.4
Prince George's	\$31,508	\$36,982	\$30,283	\$25,563	\$33,237	\$44,082	\$11,923	\$9,479	\$11,691	\$12,814	\$14,550	\$20,937	\$23,587.5
Queen Anne's	\$300	\$300	\$0	\$835	\$1,200	\$900	\$600	\$300	\$600	\$149	\$0	\$0	\$432.0
St. Mary's	\$69,169	\$46,403	\$32,951	\$49,805	\$24,599	\$35,119	\$26,618	\$33,931	\$57,870	\$84,486	\$47,722	\$57,689	\$47,196.7
Somerset	\$569	\$1,000	\$702	\$1,872	\$1,250	\$250	\$500	\$500	\$1,000	\$172	\$1,010	\$1,526	\$862.6
Talbot	\$1,208	\$1,170	\$1,613	\$1,698	\$1,649	\$1,172	\$400	\$1,247	\$1,756	\$1,308	\$114	\$862	\$1,183.0
Washington	\$4,347	\$4,603	\$4,023	\$10,953	\$7,118	\$6,067	\$5,425	\$4,061	\$3,438	\$5,512	\$4,702	\$326	\$5,047.8
Wicomico	\$7,758	\$7,139	\$11,083	\$8,954	\$3,304	\$12,633	\$6,720	\$7,833	\$5,553	\$8,560	\$13,274	\$2,075	\$7,907.2
Worcester	\$500	\$0	\$0	\$1,312	\$2,402	\$0	\$1,018	\$1,194	\$0	\$0	\$0	\$0	\$535.5
Baltimore City	\$327,518	\$348,392	\$337,770	\$412,633	\$307,131	\$156,947	-\$7,311	\$36,442	\$25,187	\$0	-\$6,000	-\$11,386	\$160,610.2
State Totals	\$640,086	\$662,328	\$614,521	\$784,079	\$572,739	\$433,535	\$166,519	\$227,700	\$245,413	\$266,958	\$275,816	\$350,327	\$436,668.3

Burial Assistance: Grants Approved and Net Expenditures

Total Grants	2015 July	2015 August	2015 September	2015 October	2015 November	2015 December	2016 January	2016 February	2016 March	2016 April	2016 May	2016 June	FY '16 Average
Allegany	0	1	0	1	0	0	1	2	5	1	3	2	1
Anne Arundel	0	0	1	0	0	0	1	0	1	0	0	0	0
Baltimore Co.	1	0	0	1	1	0	2	0	0	5	2	3	1
Calvert	0	0	1	0	0	0	0	1	0	0	1	0	0
Caroline	0	0	0	0	0	0	0	0	0	0	0	0	0
Carroll	0	0	0	0	0	2	0	0	0	1	0	0	0
Cecil	0	0	1	0	0	1	1	0	0	1	0	0	0
Charles	0	0	0	0	0	0	0	0	0	0	0	0	0
Dorchester	0	0	1	4	0	1	0	1	1	0	0	3	1
Frederick	1	0	0	0	0	1	0	0	0	0	0	0	0
Garrett	0	0	0	1	0	0	0	0	0	0	0	0	0
Harford	0	0	1	1	5	0	1	1	0	0	0	0	1
Howard	0	0	0	1	0	0	0	0	0	0	0	0	0
Kent	0	0	0	0	0	0	0	0	0	0	0	0	0
Montgomery	2	2	0	3	0	2	0	2	1	0	0	2	1
Prince George's	1	2	3	2	0	3	3	0	2	4	2	2	2
Queen Anne's	0	0	0	0	0	1	0	0	0	0	0	1	0
St. Mary's	0	1	0	0	1	0	1	1	0	2	0	0	1
Somerset	0	0	0	0	0	0	0	0	1	1	0	0	0
Talbot	0	0	0	1	0	0	0	0	0	0	0	0	0
Washington	0	0	2	0	0	1	0	0	1	0	1	1	1
Wicomico	1	0	0	0	0	1	2	0	1	2	2	3	1
Worcester	0	0	0	0	0	2	1	1	0	0	0	0	0
Baltimore City	9	0	4	15	3	31	21	9	1	0	0	0	8
State Totals	15	6	14	30	10	46	34	18	14	17	11	17	19

Burial Assistance: Grants Approved and Net Expenditures

Net Expenditures	2015 July	2015 August	2015 September	2015 October	2015 November	2015 December	2016 January	2016 February	2016 March	2016 April	2016 May	2016 June	FY '16 Average
Allegany	\$0	\$650	\$0	\$650	\$0	\$0	\$650	\$1,300	\$3,250	\$650	\$1,950	\$1,300	\$866.7
Anne Arundel	\$0	\$0	\$650	\$0	\$0	\$0	\$650	\$0	\$650	\$0	\$0	\$0	\$162.5
Baltimore Co.	\$650	\$0	\$0	\$650	\$3,250	\$0	\$1,300	\$0	\$0	\$3,250	\$1,300	\$1,950	\$1,029.2
Calvert	\$0	\$0	\$417	\$0	\$0	\$0	\$0	\$650	\$0	\$0	\$250	\$0	\$109.8
Caroline	\$0	\$0	\$0	\$0	\$0	\$0	\$0	\$0	\$0	\$0	\$0	\$0	\$0.0
Carroll	\$0	\$0	\$0	\$0	\$0	\$1,300	\$0	\$0	\$0	\$650	\$0	\$0	\$162.5
Cecil	\$0	\$0	\$650	\$0	\$0	\$650	\$650	\$0	\$0	\$650	\$0	\$0	\$216.7
Charles	\$0	\$0	\$0	\$0	\$0	\$0	\$0	\$0	\$0	\$0	\$0	\$0	\$0.0
Dorchester	\$0	\$0	\$650	\$2,600	\$0	\$650	\$0	\$650	\$650	\$0	-\$650	\$1,950	\$541.7
Frederick	\$650	\$0	\$0	\$0	\$0	\$620	\$0	\$0	\$0	\$0	\$0	\$0	\$105.8
Garrett	\$0	\$0	\$0	\$650	\$0	\$0	\$0	\$0	\$0	\$0	\$0	\$0	\$54.2
Harford	\$0	\$0	\$650	\$650	\$650	\$0	\$650	\$650	\$0	\$0	\$0	\$0	\$270.8
Howard	\$0	\$0	\$0	\$650	\$0	\$0	\$0	\$0	\$0	-\$650	\$0	\$0	\$0.0
Kent	\$0	\$0	\$0	\$0	\$0	\$0	\$0	\$0	\$0	\$0	\$0	\$0	\$0.0
Montgomery	\$1,250	\$1,300	\$0	\$1,647	\$0	\$1,300	\$0	\$1,300	\$650	\$0	\$0	\$1,300	\$728.9
Prince George's	\$650	\$1,300	\$1,950	\$1,300	\$0	\$1,950	\$1,950	\$0	\$1,300	\$2,600	\$1,298	\$1,300	\$1,299.8
Queen Anne's	\$0	\$0	\$0	\$0	\$0	\$650	\$0	\$0	\$0	\$0	\$0	\$650	\$108.3
St. Mary's	\$0	\$650	\$0	\$0	\$650	\$0	\$650	\$650	\$0	\$1,300	\$0	\$0	\$325.0
Somerset	\$0	\$0	\$0	\$0	\$0	\$0	\$0	\$0	\$650	\$650	\$0	\$0	\$108.3
Talbot	\$0	\$0	\$0	\$650	\$0	\$0	\$0	\$0	\$0	\$0	\$0	\$0	\$54.2
Washington	\$0	\$0	\$1,300	\$0	\$0	\$650	\$0	\$0	\$635	\$0	\$650	\$650	\$323.8
Wicomico	\$650	\$0	\$0	\$0	\$0	\$650	\$1,300	\$0	\$650	\$1,300	\$1,300	\$1,740	\$632.5
Worcester	\$0	\$0	\$0	\$0	\$0	\$1,300	\$650	\$650	\$0	\$0	\$0	\$0	\$216.7
Baltimore City	\$5,850	\$0	\$2,600	\$9,750	\$1,950	\$20,150	\$13,650	\$5,850	\$650	\$0	\$0	\$0	\$7,317.2
State Totals	\$9,700	\$3,900	\$8,867	\$19,197	\$6,500	\$29,870	\$22,100	\$11,700	\$9,085	\$10,400	\$6,098	\$10,840	\$14,634.5

Medical Assistance: Applications Received and Applications Approved

MA- Community Care

Applications Received	2015 July	2015 August	2015 September	2015 October	2015 November	2015 December	2016 January	2016 February	2016 March	2016 April	2016 May	2016 June	FY '16 Average
Allegany	90	81	74	89	62	83	65	86	100	98	87	64	82
Anne Arundel	191	215	190	248	191	216	208	213	261	210	336	237	226
Baltimore Co.	548	473	527	573	436	599	402	559	604	562	646	744	556
Calvert	82	48	37	57	53	50	44	36	55	53	42	59	51
Caroline	57	57	40	49	55	39	41	40	43	27	44	65	46
Carroll	67	65	59	67	72	65	48	82	84	87	66	65	69
Cecil	96	66	91	84	59	72	64	62	83	51	78	69	73
Charles	87	79	83	84	92	70	65	80	122	99	100	99	88
Dorchester	65	75	92	86	89	81	54	58	67	64	68	58	71
Frederick	185	181	217	189	179	197	140	192	227	164	311	254	203
Garrett	20	20	14	16	14	18	9	18	31	31	24	36	21
Harford	140	128	120	136	128	143	120	188	166	124	125	154	139
Howard	188	178	189	179	97	141	109	122	124	94	184	166	148
Kent	35	19	31	13	15	16	26	16	11	11	13	14	18
Montgomery	834	853	853	912	697	873	652	918	1,065	878	834	952	860
Prince George's	1,012	839	851	945	740	806	690	917	1,114	973	919	1,036	904
Queen Anne's	37	26	27	35	10	24	24	18	26	23	31	23	25
St. Mary's	63	61	50	83	49	52	51	57	63	50	113	61	63
Somerset	23	26	20	38	22	20	21	20	36	26	31	31	26
Talbot	32	20	44	27	28	29	30	46	32	23	23	28	30
Washington	151	149	174	144	152	129	105	156	169	132	159	144	147
Wicomico	148	115	125	137	118	135	124	125	128	105	101	93	121
Worcester	58	50	47	61	46	45	40	64	47	54	45	38	50
Baltimore City	1,470	1,361	1,291	1,401	1,304	1,273	980	1,330	1,659	1,467	1,356	1,528	1,368
State Totals	5,679	5,185	5,246	5,653	4,708	5,176	4,112	5,403	6,317	5,406	5,736	6,018	5,387

Medical Assistance: Applications Received and Applications Approved

MA- Community Care

Applications Approved	2015 July	2015 August	2015 September	2015 October	2015 November	2015 December	2016 January	2016 February	2016 March	2016 April	2016 May	2016 June	FY '16 Average
Allegany	73	73	64	90	53	65	54	92	89	50	80	43	69
Anne Arundel	275	275	236	222	220	271	228	234	248	99	314	291	243
Baltimore Co.	544	486	484	496	456	502	387	443	622	304	558	615	491
Calvert	50	46	30	40	29	23	26	29	23	30	39	46	34
Caroline	47	39	33	42	39	41	36	36	29	21	32	40	36
Carroll	58	65	47	53	41	57	43	78	51	60	46	78	56
Cecil	96	67	83	75	42	66	48	75	84	38	87	68	69
Charles	100	85	80	70	63	60	55	96	83	57	99	148	83
Dorchester	53	52	56	43	55	56	31	46	39	38	63	54	49
Frederick	141	121	127	131	103	129	85	136	121	60	337	169	138
Garrett	20	22	18	19	16	22	9	18	27	14	24	38	21
Harford	137	88	133	135	109	130	109	149	150	94	117	141	124
Howard	201	192	163	133	96	137	135	142	134	113	184	174	150
Kent	18	16	19	15	10	13	10	18	14	7	16	8	14
Montgomery	809	780	614	808	647	733	620	752	991	585	808	1,014	763
Prince George's	789	644	601	583	622	623	508	665	858	499	846	1,077	693
Queen Anne's	30	15	12	24	7	19	16	11	23	7	22	29	18
St. Mary's	70	62	61	68	55	63	51	51	60	30	116	65	63
Somerset	29	18	23	29	27	18	17	25	35	19	25	51	26
Talbot	25	26	26	26	20	28	19	21	58	18	21	26	26
Washington	141	128	118	137	98	134	92	114	167	82	136	120	122
Wicomico	167	101	92	95	105	100	90	100	109	57	82	87	99
Worcester	51	43	23	45	19	31	21	36	34	27	48	26	34
Baltimore City	1,500	1,330	1,181	1,382	1,032	1,227	939	1,144	1,417	840	1,325	1,554	1,239
State Totals	5,424	4,774	4,324	4,761	3,964	4,548	3,629	4,511	5,466	3,149	5,425	5,962	4,661

Medical Assistance: Applications Received and Applications Approved

MA- Long Term Care

Applications Received	2015 July	2015 August	2015 September	2015 October	2015 November	2015 December	2016 January	2016 February	2016 March	2016 April	2016 May	2016 June	FY '16 Average
Regional Office	465	398	405	433	438	567	502	551	539	435	511	518	480
Allegany	33	38	29	27	37	43	32	30	33	34	43	37	35
Anne Arundel	1	2	3	2	11	21	13	18	11	12	15	9	10
Baltimore Co.	4	7	7	4	36	57	38	45	32	26	33	25	26
Calvert	12	13	10	15	7	14	12	18	7	11	6	16	12
Caroline	10	10	8	6	7	11	11	8	13	5	10	6	9
Carroll	14	22	24	15	12	17	8	27	11	13	13	15	16
Cecil	6	15	11	9	6	15	15	15	18	26	24	17	15
Charles	14	15	17	14	16	11	8	17	16	8	10	14	13
Dorchester	7	6	5	6	7	5	3	10	14	14	7	9	8
Frederick	33	18	30	23	36	36	42	43	48	46	54	55	39
Garrett	13	6	11	8	13	11	11	11	7	14	9	6	10
Harford	25	27	24	24	22	21	17	28	31	39	28	41	27
Howard	13	13	12	15	11	15	16	16	11	18	8	16	14
Kent	3	3	2	2	6	3	1	10	4	0	5	3	4
Montgomery	90	74	80	93	94	132	111	146	130	105	109	103	106
Prince George's	5	3	11	12	52	83	48	66	46	38	33	34	36
Queen Anne's	3	4	2	5	3	9	7	7	4	6	7	9	6
St. Mary's	20	13	10	12	18	13	11	9	21	15	15	18	15
Somerset	12	7	7	7	8	4	10	6	8	8	5	10	8
Talbot	8	5	8	9	7	4	9	11	9	5	3	8	7
Washington	43	31	29	37	24	32	33	45	30	37	26	35	34
Wicomico	30	24	15	24	10	22	17	23	15	23	15	10	19
Worcester	6	9	13	8	8	12	9	11	11	10	11	10	10
Baltimore City	13	11	20	19	55	96	75	71	48	85	71	37	50
State Totals	883	774	793	829	944	1,254	1,059	1,242	1,117	1,033	1,071	1,061	1,005

Note: MA-LTC processing was regionalized for Baltimore City and Anne Arundel, Baltimore and Prince George's counties beginning in October 2009.

Medical Assistance: Applications Received and Applications Approved

MA- Long Term Care

Applications Approved	2015 July	2015 August	2015 September	2015 October	2015 November	2015 December	2016 January	2016 February	2016 March	2016 April	2016 May	2016 June	FY '16 Average
Regional Office	480	496	482	440	410	425	299	456	520	343	470	431	438
Allegany	29	43	36	30	27	33	27	21	33	35	24	36	31
Anne Arundel	2	0	2	2	2	1	4	1	2	14	1	0	3
Baltimore Co.	14	11	11	18	17	13	5	9	16	35	9	9	14
Calvert	6	8	14	6	10	11	7	9	12	8	8	8	9
Caroline	5	2	8	7	8	9	3	3	4	2	8	6	5
Carroll	15	22	18	25	28	17	15	15	22	25	20	17	20
Cecil	7	15	10	18	7	1	8	9	8	17	18	25	12
Charles	9	13	19	18	16	17	14	13	26	3	26	30	17
Dorchester	7	4	5	10	3	6	4	5	15	13	14	15	8
Frederick	22	21	28	11	20	44	13	30	25	50	31	40	28
Garrett	13	6	7	6	10	10	2	12	13	8	2	8	8
Harford	29	20	32	31	20	24	24	30	28	34	28	33	28
Howard	22	17	12	14	27	17	15	20	8	14	14	12	16
Kent	6	4	5	5	5	2	2	7	3	0	8	11	5
Montgomery	76	82	86	96	70	66	67	89	104	165	77	102	90
Prince George's	4	0	2	4	10	2	4	2	5	48	3	0	7
Queen Anne's	3	10	3	3	2	6	0	9	6	0	1	2	4
St. Mary's	10	12	9	11	8	10	16	13	20	17	15	12	13
Somerset	9	8	7	15	11	3	11	5	7	6	11	4	8
Talbot	9	8	9	4	6	9	6	6	8	7	11	5	7
Washington	43	37	39	33	40	24	29	41	45	33	65	33	39
Wicomico	15	24	19	13	26	20	12	18	19	19	16	21	19
Worcester	8	8	9	13	8	10	15	13	5	17	8	14	11
Baltimore City	2	4	10	9	6	2	3	8	2	91	5	6	12
State Totals	845	875	882	842	797	782	605	844	956	1,004	893	880	850

Note: MA-LTC processing was regionalized for Baltimore City and Anne Arundel, Baltimore and Prince George's counties beginning in October 2009.

Medical Assistance: Applications Received and Applications Approved

MA- SSI

Applications Received	2015 July	2015 August	2015 September	2015 October	2015 November	2015 December	2016 January	2016 February	2016 March	2016 April	2016 May	2016 June	FY '16 Average
Allegany	31	29	22	37	22	24	24	25	17	21	22	15	24
Anne Arundel	22	27	16	27	15	16	21	19	16	11	23	19	19
Baltimore Co.	54	61	57	52	47	56	45	36	40	59	48	60	51
Calvert	11	3	5	8	2	3	9	3	5	4	5	3	5
Caroline	5	5	2	3	1	1	3	7	3	1	5	2	3
Carroll	9	5	6	11	5	6	3	4	6	8	0	2	5
Cecil	22	18	26	23	11	10	10	7	16	16	16	8	15
Charles	13	17	5	14	11	8	13	2	12	16	5	8	10
Dorchester	5	8	6	6	11	9	9	4	2	7	7	4	7
Frederick	15	19	21	15	10	10	7	15	20	19	135	49	28
Garrett	3	1	2	6	2	6	1	3	5	2	8	7	4
Harford	20	12	14	12	6	17	19	10	21	10	11	11	14
Howard	20	22	15	15	6	14	15	11	11	10	13	13	14
Kent	5	2	6	1	0	2	0	3	2	1	3	0	2
Montgomery	102	80	70	103	51	66	53	83	70	56	60	60	71
Prince George's	236	71	58	62	55	60	48	67	91	48	53	57	76
Queen Anne's	10	4	3	5	1	2	4	8	3	4	4	6	5
St. Mary's	17	22	12	22	5	11	12	8	10	7	53	19	17
Somerset	11	7	4	6	10	3	2	10	8	9	6	12	7
Talbot	2	0	5	2	0	3	1	2	1	1	5	1	2
Washington	25	24	15	32	22	18	20	29	25	9	30	19	22
Wicomico	41	27	24	30	28	44	25	35	22	18	16	19	27
Worcester	3	9	9	16	3	9	2	15	6	7	5	5	7
Baltimore City	323	249	208	229	153	158	159	141	173	187	188	172	195
State Totals	1,005	722	611	737	477	556	505	547	585	531	721	571	631

Medical Assistance: Applications Received and Applications Approved

MA- SSI

Applications Approved	2015 July	2015 August	2015 September	2015 October	2015 November	2015 December	2016 January	2016 February	2016 March	2016 April	2016 May	2016 June	FY '16 Average
Allegany	29	34	23	42	24	22	29	46	23	24	34	15	29
Anne Arundel	101	126	64	65	59	52	69	70	80	100	70	65	77
Baltimore Co.	154	169	191	169	148	171	138	147	191	197	165	135	165
Calvert	12	23	8	15	7	9	11	14	8	6	11	14	12
Caroline	17	8	5	14	4	7	12	11	9	6	11	5	9
Carroll	17	10	14	28	13	12	14	30	10	12	16	32	17
Cecil	49	33	49	45	14	25	23	42	43	28	31	34	35
Charles	35	30	23	26	19	22	23	42	20	22	35	75	31
Dorchester	19	18	14	18	22	21	13	10	9	16	9	32	17
Frederick	20	24	25	25	24	23	9	36	26	25	225	57	43
Garrett	4	4	6	8	3	11	3	7	5	2	9	9	6
Harford	48	22	42	37	37	40	41	33	44	24	49	63	40
Howard	71	64	35	18	18	13	28	28	47	33	34	41	36
Kent	4	4	8	7	2	9	1	4	2	6	10	2	5
Montgomery	196	140	96	122	129	106	97	148	320	205	170	173	159
Prince George's	259	80	72	67	84	87	67	129	307	367	303	350	181
Queen Anne's	15	7	2	4	2	4	4	3	5	4	6	16	6
St. Mary's	27	28	22	27	9	16	19	18	26	12	67	27	25
Somerset	15	7	3	7	15	5	3	16	15	9	14	29	12
Talbot	4	8	10	6	4	7	6	6	16	5	8	6	7
Washington	70	50	51	61	36	56	47	56	80	27	59	41	53
Wicomico	113	43	41	41	47	55	38	47	57	81	27	37	52
Worcester	20	19	12	28	4	11	2	16	10	27	32	10	16
Baltimore City	515	450	385	432	284	357	261	312	428	399	486	456	397
State Totals	1,814	1,401	1,201	1,312	1,008	1,141	958	1,271	1,781	1,637	1,881	1,724	1,427

Medical Assistance: Applications Received and Applications Approved

MA- MCHP

Applications Received	2015 July	2015 August	2015 September	2015 October	2015 November	2015 December	2016 January	2016 February	2016 March	2016 April	2016 May	2016 June	FY '16 Average
Allegany	0	0	0										0
Anne Arundel	6	6	6										6
Baltimore Co.	37	21	15										24
Calvert	0	0	2										1
Caroline	0	1	1										1
Carroll	7	8	7										7
Cecil	3	0	0										1
Charles	8	5	4										6
Dorchester	1	1	2										1
Frederick	8	4	12										8
Garrett	0	0	1										0
Harford	7	4	2										4
Howard	3	0	0										1
Kent	2	0	0										1
Montgomery	8	9	10										9
Prince George's	15	6	5										9
Queen Anne's	2	3	0										2
St. Mary's	2	1	0										1
Somerset	0	0	0										0
Talbot	0	1	0										0
Washington	2	3	1										2
Wicomico	0	0	2										1
Worcester	0	0	0										0
Baltimore City	81	61	49										64
State Totals	192	134	119										148

Medical Assistance: Cases Under Care

MA- Community Care

MA-CC Cases	2015 July	2015 August	2015 September	2015 October	2015 November	2015 December	2016 January	2016 February	2016 March	2016 April	2016 May	2016 June	FY '16 Average
Allegany	3,308	2,834	2,762	2,134	2,064	1,652	1,469	1,449	1,175	1,187	1,098	1,106	1,853
Anne Arundel	15,263	12,308	11,782	8,158	7,908	5,859	5,100	5,107	3,898	3,875	3,361	3,532	7,179
Baltimore Co.	32,131	27,078	26,260	19,491	18,673	14,138	12,008	11,891	9,626	9,594	8,050	8,308	16,437
Calvert	2,309	1,864	1,806	1,337	1,291	996	873	866	686	685	633	642	1,166
Caroline	1,890	1,540	1,467	1,098	1,049	826	722	702	540	533	476	494	945
Carroll	3,644	2,996	2,867	2,103	2,052	1,621	1,417	1,399	1,057	1,062	923	939	1,840
Cecil	4,010	3,260	3,146	2,201	2,123	1,663	1,453	1,438	1,144	1,106	1,021	1,061	1,969
Charles	5,252	4,324	4,172	3,061	2,973	2,172	1,780	1,782	1,347	1,382	1,190	1,249	2,557
Dorchester	2,192	1,784	1,752	1,276	1,219	970	885	881	717	713	665	652	1,142
Frederick	6,812	5,652	5,498	4,120	4,036	3,290	2,911	2,897	2,305	2,269	1,930	1,946	3,639
Garrett	1,202	968	929	670	652	553	520	518	463	473	451	468	656
Harford	6,443	5,407	5,282	4,080	3,867	3,034	2,632	2,606	2,158	2,133	1,916	1,943	3,458
Howard	6,764	5,304	5,119	3,651	3,548	2,806	2,546	2,567	2,092	2,122	1,917	1,972	3,367
Kent	793	647	632	433	411	307	293	290	223	217	211	216	389
Montgomery	33,938	27,551	26,514	19,391	18,729	13,851	12,185	12,216	9,995	9,909	9,030	9,349	16,888
Prince George's	44,638	37,243	36,090	25,889	25,095	17,247	14,648	14,635	12,026	12,135	10,521	10,882	21,754
Queen Anne's	1,512	1,235	1,177	820	779	569	485	471	399	395	360	373	715
St. Mary's	3,928	3,141	3,010	2,157	2,064	1,573	1,372	1,344	1,000	996	896	928	1,867
Somerset	1,195	933	900	677	663	541	507	495	429	436	412	425	634
Talbot	1,405	1,081	1,005	699	669	526	464	464	416	411	385	399	660
Washington	6,133	5,024	4,881	3,615	3,493	2,867	2,563	2,533	2,020	2,019	1,839	1,890	3,240
Wicomico	4,878	4,082	3,937	2,833	2,745	2,058	1,825	1,793	1,357	1,358	1,197	1,234	2,441
Worcester	2,086	1,714	1,649	1,180	1,121	909	815	801	668	668	600	598	1,067
Baltimore City	49,325	42,413	41,500	32,142	31,420	26,170	24,353	24,403	21,430	21,536	19,033	19,443	29,431
State Totals	241,051	200,383	194,137	143,216	138,644	106,198	93,826	93,548	77,171	77,214	68,115	70,049	125,296

Medical Assistance: Cases Under Care

MA- Long Term Care

MA-LTC Cases	2015 July	2015 August	2015 September	2015 October	2015 November	2015 December	2016 January	2016 February	2016 March	2016 April	2016 May	2016 June	FY '16 Average
Regional Office	8,417	8,366	8,606	8,562	8,616	8,592	8,586	8,765	8,728	8,974	8,905	9,090	8,684
Allegany	630	630	643	633	650	636	627	624	621	619	612	624	629
Anne Arundel	15	13	14	14	18	19	24	28	21	23	26	25	20
Baltimore Co.	89	90	93	98	110	116	110	112	109	120	117	126	108
Calvert	165	167	177	168	170	170	168	172	176	173	170	174	171
Caroline	119	115	118	117	118	119	116	116	114	113	113	114	116
Carroll	403	404	420	408	417	413	411	415	409	420	408	411	412
Cecil	237	241	243	239	241	224	217	220	213	221	214	233	229
Charles	322	324	338	332	335	336	329	336	344	341	341	354	336
Dorchester	167	167	164	160	162	159	157	155	153	163	164	166	161
Frederick	497	494	504	487	496	496	495	509	493	510	515	527	502
Garrett	266	266	269	266	265	263	258	258	257	259	249	246	260
Harford	481	478	486	493	495	494	496	506	494	504	490	512	494
Howard	351	347	342	341	355	354	351	355	346	364	336	338	348
Kent	88	86	86	86	88	88	89	94	92	87	88	93	89
Montgomery	1,945	1,935	1,964	1,956	1,984	1,971	1,971	1,998	2,012	2,042	1,986	2,029	1,983
Prince George's	39	42	43	42	54	57	58	54	51	54	52	53	50
Queen Anne's	94	101	101	100	99	98	94	96	94	94	89	84	95
St. Mary's	256	253	259	257	256	250	254	261	260	261	268	271	259
Somerset	131	131	134	141	147	142	148	147	142	140	139	134	140
Talbot	126	126	128	129	132	133	132	135	138	147	147	148	135
Washington	629	644	651	645	654	622	616	627	627	632	647	661	638
Wicomico	416	421	430	419	430	425	419	419	414	427	427	436	424
Worcester	176	171	177	181	181	180	183	187	186	189	189	196	183
Baltimore City	51	52	61	59	66	63	62	64	58	61	58	65	60
State Totals	16,110	16,064	16,451	16,333	16,539	16,420	16,371	16,653	16,552	16,938	16,750	17,110	16,524

Note: MA-LTC processing was regionalized for Baltimore City and Anne Arundel, Baltimore and Prince George's counties beginning in October 2009.

Medical Assistance: Cases Under Care

MA- SSI

MA-SSI Cases	2015 July	2015 August	2015 September	2015 October	2015 November	2015 December	2016 January	2016 February	2016 March	2016 April	2016 May	2016 June	FY '16 Average
Allegany	2,433	2,446	2,455	2,455	2,455	2,438	2,430	2,465	2,460	2,472	2,470	2,474	2,454
Anne Arundel	5,766	5,835	5,859	5,881	5,916	5,903	5,940	5,984	5,995	6,066	6,007	6,031	5,932
Baltimore Co.	14,869	14,864	15,031	15,018	15,038	15,095	15,102	15,157	15,144	15,308	15,250	15,299	15,098
Calvert	897	908	910	911	913	910	907	922	930	934	937	946	919
Caroline	782	792	788	796	800	784	785	792	794	799	796	795	792
Carroll	1,421	1,419	1,437	1,440	1,435	1,438	1,440	1,472	1,448	1,454	1,443	1,469	1,443
Cecil	1,904	1,895	1,944	1,925	1,917	1,920	1,931	1,943	1,945	1,952	1,953	1,981	1,934
Charles	2,217	2,228	2,233	2,232	2,244	2,251	2,268	2,293	2,290	2,309	2,322	2,387	2,273
Dorchester	1,326	1,317	1,327	1,308	1,322	1,309	1,316	1,307	1,282	1,276	1,259	1,287	1,303
Frederick	2,106	2,108	2,133	2,127	2,141	2,123	2,124	2,166	2,143	2,159	2,367	2,399	2,175
Garrett	683	682	682	684	681	686	686	682	675	676	676	679	681
Harford	3,156	3,131	3,159	3,130	3,150	3,133	3,156	3,185	3,141	3,159	3,140	3,189	3,152
Howard	2,835	2,882	2,914	2,908	2,911	2,897	2,910	2,920	2,947	2,969	2,978	3,001	2,923
Kent	327	327	327	326	326	329	328	329	328	332	339	344	330
Montgomery	13,352	13,362	13,414	13,355	13,461	13,450	13,469	13,550	13,723	13,872	13,858	13,969	13,570
Prince George's	13,224	13,132	13,062	12,895	12,850	12,617	12,603	12,691	12,881	13,206	13,181	13,460	12,984
Queen Anne's	440	443	446	450	448	455	455	457	453	457	442	454	450
St. Mary's	1,630	1,630	1,644	1,637	1,638	1,623	1,620	1,628	1,627	1,630	1,652	1,679	1,637
Somerset	825	820	819	816	826	827	819	812	810	817	813	839	820
Talbot	578	584	590	581	575	571	570	579	592	592	584	588	582
Washington	3,634	3,639	3,646	3,654	3,669	3,659	3,664	3,704	3,759	3,748	3,764	3,771	3,693
Wicomico	2,636	2,630	2,651	2,642	2,650	2,621	2,615	2,640	2,661	2,706	2,693	2,700	2,654
Worcester	775	785	786	801	800	793	784	799	794	814	798	791	793
Baltimore City	46,940	46,876	46,896	46,653	46,543	46,377	46,256	46,168	45,970	46,075	46,083	46,412	46,437
State Totals	124,756	124,735	125,153	124,625	124,709	124,209	124,178	124,645	124,792	125,782	125,805	126,944	125,028

Medical Assistance: Cases Under Care

MA- MCHP

Assistance Units	2015 July	2015 August	2015 September	2015 October	2015 November	2015 December	2016 January	2016 February	2016 March	2016 April	2016 May	2016 June	FY '16 Average
Allegany	141	115	89										115
Anne Arundel	2,295	1,914	1,339										1,849
Baltimore Co.	4,870	4,198	3,253										4,107
Calvert	203	141	94										146
Caroline	232	196	139										189
Carroll	489	401	329										406
Cecil	292	224	147										221
Charles	668	596	459										574
Dorchester	215	191	126										177
Frederick	1,096	877	668										880
Garrett	28	20	12										20
Harford	430	367	267										355
Howard	1,027	828	542										799
Kent	66	55	40										54
Montgomery	8,007	6,269	4,439										6,238
Prince George's	6,354	5,546	4,213										5,371
Queen Anne's	101	80	57										79
St. Mary's	280	231	162										224
Somerset	132	112	66										103
Talbot	215	156	89										153
Washington	499	363	273										378
Wicomico	526	457	375										453
Worcester	309	246	186										247
Baltimore City	4,483	3,780	2,942										3,735
State Totals	32,958	27,363	20,306										26,876